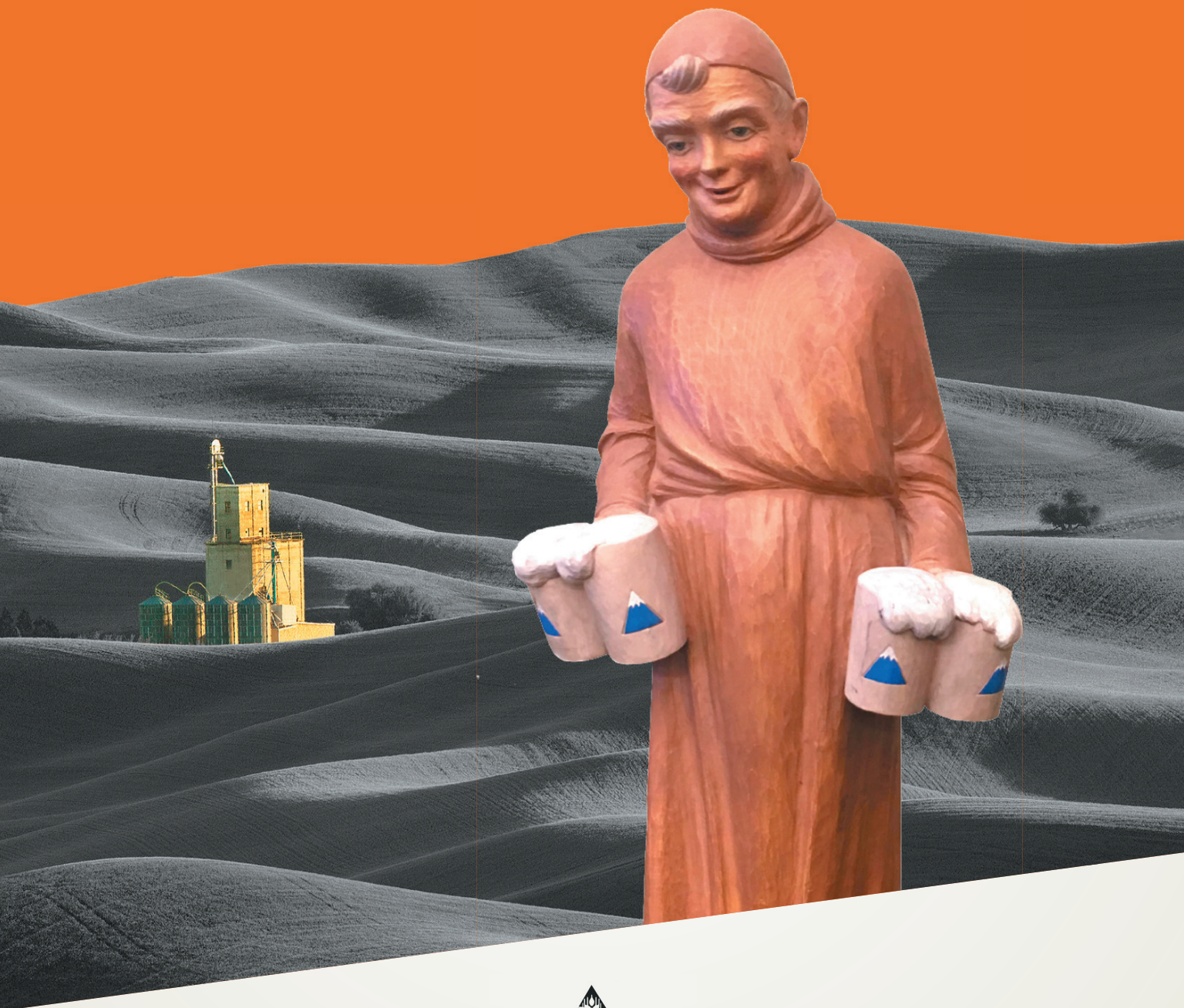




Like the rolling hills of Eastern Washington, Brūmalt gives a multi-layered addition to your latest craft. It adds depth and complexity to your recipes for an added touch of tart and sweet flavor.



Flip for Typical Analysis



BRŪMALT

MALT

Brūmalt is an American-style honey malt. Tart but slightly sweet, Brūmalt delivers a lively fruity complexity not found in other malts. This vibrant malt was designed to punch up all your latest creations.



TYPICAL ANALYSIS & DETAILS

ASBC COLOR 15 - 25

MOISTURE (%) 5.5

PROTEIN (%) 12.5

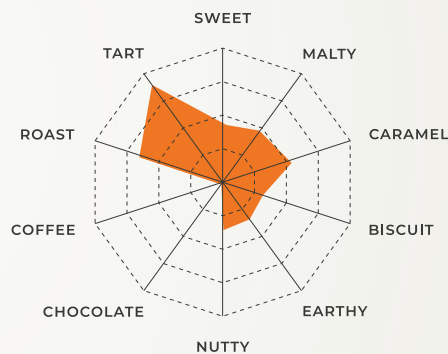
FLAVOR PROFILE Malty sweetness complemented with notes of honey, stone fruit and a slight tartness

COLOR PROFILE Deep amber

INCLUSION RATE Up to 15%

SUGGESTED USE IPA, Saison, Pale Ale, Belgian Ales, Lagers and Cream Ale

AVAILABLE PACKAGING Bulk Pneumatic truck, Super sack, 55lb bag



Scan to find your local warehouse and contact your sales representative

IT'S YOUR MALT.

The world's best malt is not created just by algorithms and recipes. Like producing award-winning beer and spirits, it takes a sixth sense, a knowing when the flavor, depth, color and character of the malt is just right. It takes an intuition and an instinct that takes decades to master. We call it *soul*.

For over 85 years, it has been our passion to make perfect malt for craft brewers and distillers like you. Thank you for choosing us to be at the heart of your craft.

PACKED AND DISTRIBUTED BY



VANCOUVER, WASHINGTON

The data listed under typical analysis are subject to the standard analytical deviations. They represent average values, not to be considered as guarantees, expressed or implied, nor as a condition of sale. The product information contained herein is correct, to the best of our knowledge. As the statements are intended only as a source of information, no statement is to be construed as violating any patent or copyright.