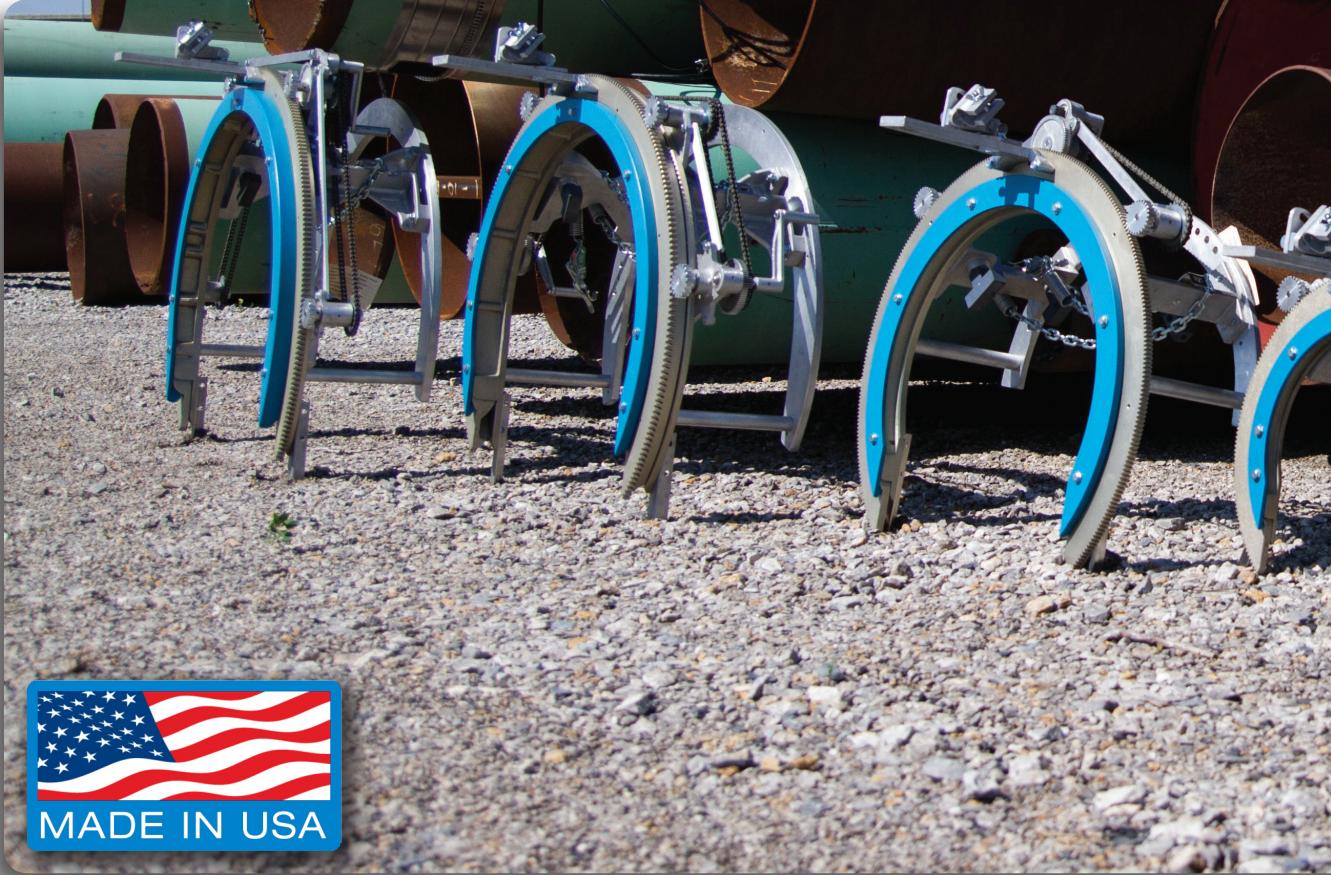


# SADDLES

## STANDARD PIPE CUTTING AND BEVELING MACHINES

Each H&M machine is constructed of durable, lightweight, hard-anodized aluminum for easy transportation to any job site for cutting and beveling 2" to 36" pipe precisely, quickly and economically, even under the toughest conditions.



### HOW FAST?

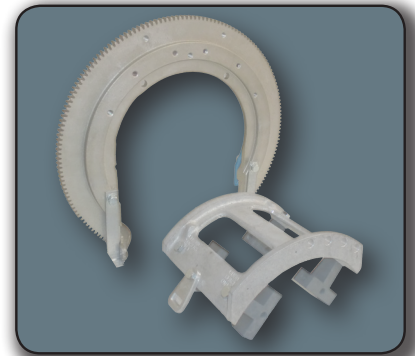
For example when using the No. 3 Standard Beveling Machine, a 20" pipe can be cut and beveled in about four minutes!



H&M Pipe Beveling Machines save weld prep time and money compared to hand cutting. With easy-to-follow manuals and a few minutes of instruction, any operator can easily make accurate cuts and bevels. H&M's unique "split horseshoe" design permits easy placement over pipe sections. A quick operating boomer assembly securely locks the machine to the pipe for an entire 360-degree rotation. No repositioning is ever needed! H&M's Cuboid Spacer System keeps the spacers on the machine to minimize downtime.

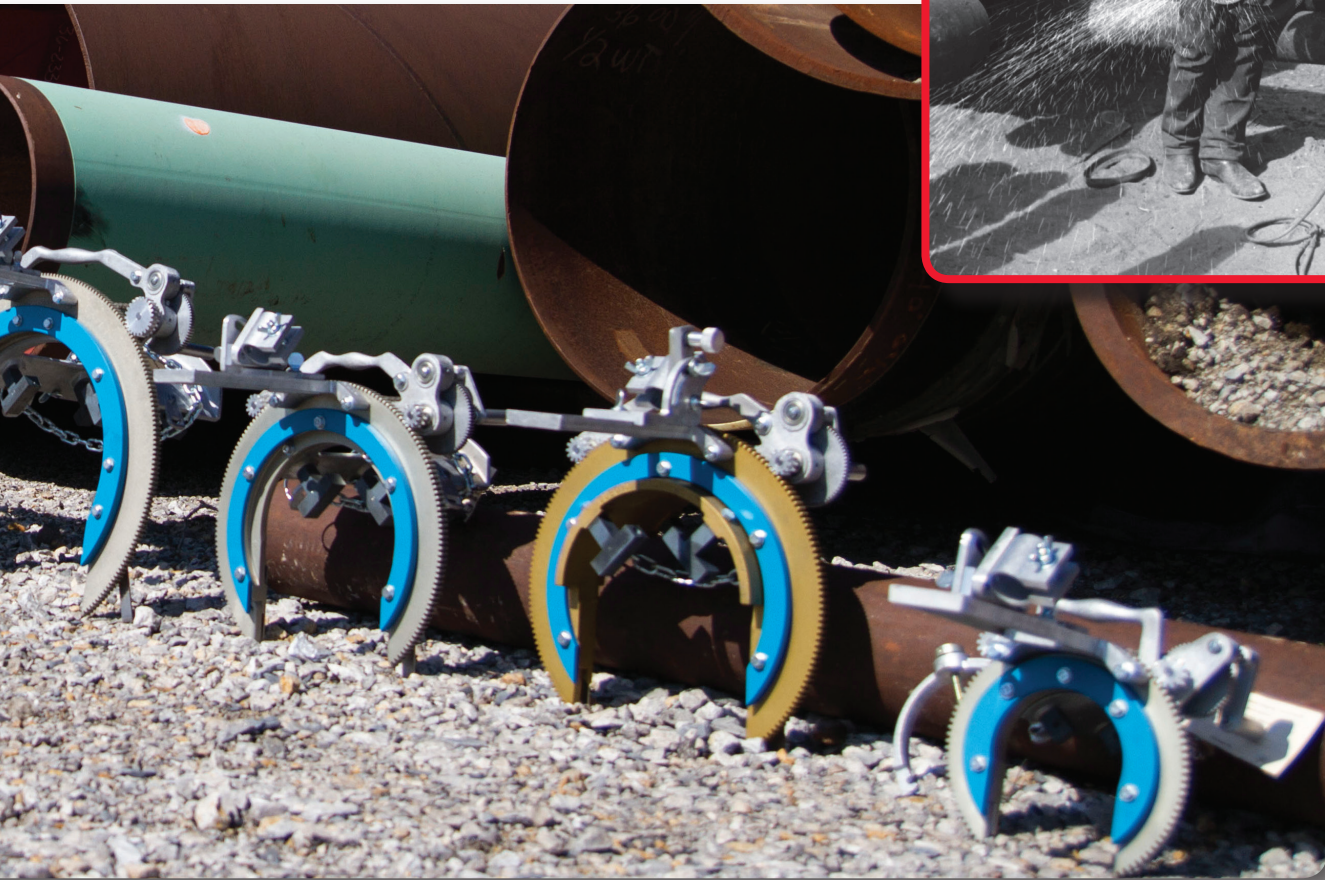
### SADDLE DESIGN

H&M achieves functional and financial advantages for the customer over its competition by designing the precision saddle and ring gear as separate components. Instead of locating the ring gear in the middle H&M places the saddle behind the ring gear, greatly reducing the risk of warping the saddle while back-beveling. H&M's Saddle Assembly is less likely to be damaged; however, if a problem occurs, this separate component design is more economical in replacement costs.



**Quality Control** Every ring gear and saddle are precisely machined and calibrated to  $\pm .025$  in concentricity and  $\pm .015$  in squareness. The standard rear-mounted short saddle aids cutting and beveling in tight locations, while allowing precise back-beveling operations.

*The original, Portable Pipe Cutting and Beveling Machine Since 1934*



## STANDARD PIPE CUTTING AND BEVELING MACHINES

| MODEL NO. | PART NO. | STANDARD PIPE SIZES |      |     |     |        | NET WEIGHT |        | SHIPPING WEIGHT |     | SHIPPING DIMENSIONS |     |        |              |                     |
|-----------|----------|---------------------|------|-----|-----|--------|------------|--------|-----------------|-----|---------------------|-----|--------|--------------|---------------------|
|           |          | IN                  | MM   | IN  | MM  | IN     | MM         | LB     | KG              | LB  | KG                  | IN  | MM     |              |                     |
| 0         | HM00     | 2"                  | 2.5" | 3"  | 4"  | 60.32  | 73.02      | 88.90  | 114.30          | 10  | 4.31                | 12  | 5.44   | 9 x 11 x 11  | 229 x 279 x 279     |
| 1         | HM01     | 3"                  | 4"   | 6"  | 8"  | 88.90  | 114.30     | 168.27 | 219.07          | 18  | 8.17                | 25  | 11.34  | 13 x 16 x 17 | 330 x 406 x 432     |
| 2         | HM02     | 6"                  | 7"   | 8"  | 10" | 168.27 | 193.67     | 219.07 | 273.05          | 27  | 12.25               | 38  | 17.24  | 15 x 22 x 22 | 381 x 559 x 559     |
| 3         | HM03     | 12"                 | 14"  | 16" | 18" | 323.85 | 355.60     | 406.40 | 457.20          | 55  | 24.95               | 85  | 38.56  | 13 x 34 x 34 | 330 x 864 x 864     |
| 4         | HM04     | 20"                 | 22"  | 24" | 26" | 508.00 | 558.80     | 609.60 | 660.40          | 81  | 36.74               | 118 | 53.52  | 14 x 36 x 35 | 356 x 914 x 1,143   |
| 30        | HM30     | 24"                 | 26"  | 28" | 30" | 609.60 | 660.40     | 711.20 | 762.00          | 92  | 41.73               | 133 | 60.33  | 14 x 38 x 48 | 356 x 965 x 1,219   |
| 5         | HM05     | 30"                 | 32"  | 34" | 36" | 762.00 | 812.80     | 863.60 | 914.40          | 145 | 65.77               | 250 | 113.40 | 16 x 48 x 61 | 406 x 1,219 x 1,549 |

Inches = Nominal Pipe Size    Millimeters = Pipe OD    Spacers for odd pipe sizes and tubing can be special ordered.  
Machines are manually driven with the option to be motorized. Cuboid Spacers are standard on all H&M Saddle-Type Beveling Machines.