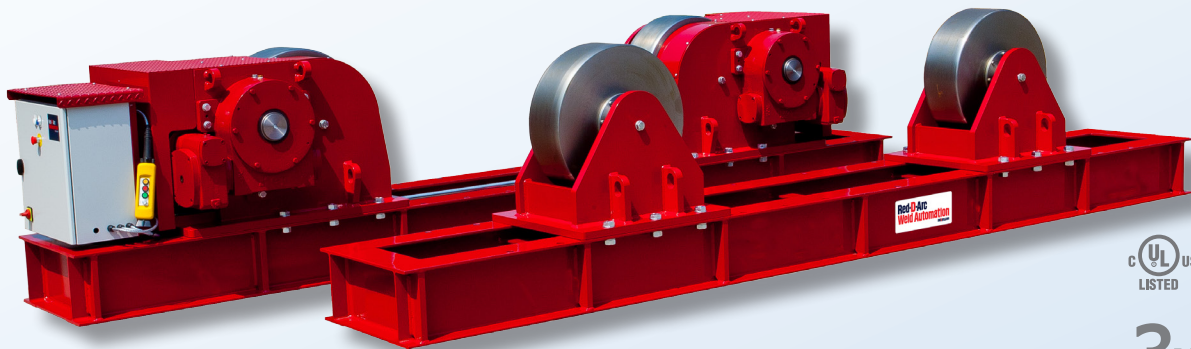


# RDA CR300-S NA Turning Rolls 300 ton set capacity

Red-D-Arc's RDA CR300-S NA turning roll sets feature all-fabricated-steel base construction with wheel brackets that can be manually positioned to accommodate vessels of varying diameters around a constant center-line. Vessel rotation is via a two-motor, two-wheel-drive system which eliminates the need for torque tubes. Drive motors are inverter-controlled variable-frequency AC-type with fan cooling and are fully enclosed for trouble-free operation. Double reduction worm and wheel gearboxes are used for enhanced durability and extended overhaul intervals. Drive and idler wheel shafts are housed in deep-groove-type roller bearings and gearboxes are of aluminum/bronze construction. Both the drive roll and idler roll have forklift slots built into the frames for easy maneuverability. Control boxes have IP65-rated enclosures and utilize variable-frequency AC-control electrical systems with full UL and CE certification. In addition, all our conventional turning rolls have been tested and certified by UL to establish safe working loads - a first in the weld automation industry.



**3 year**  
warranty

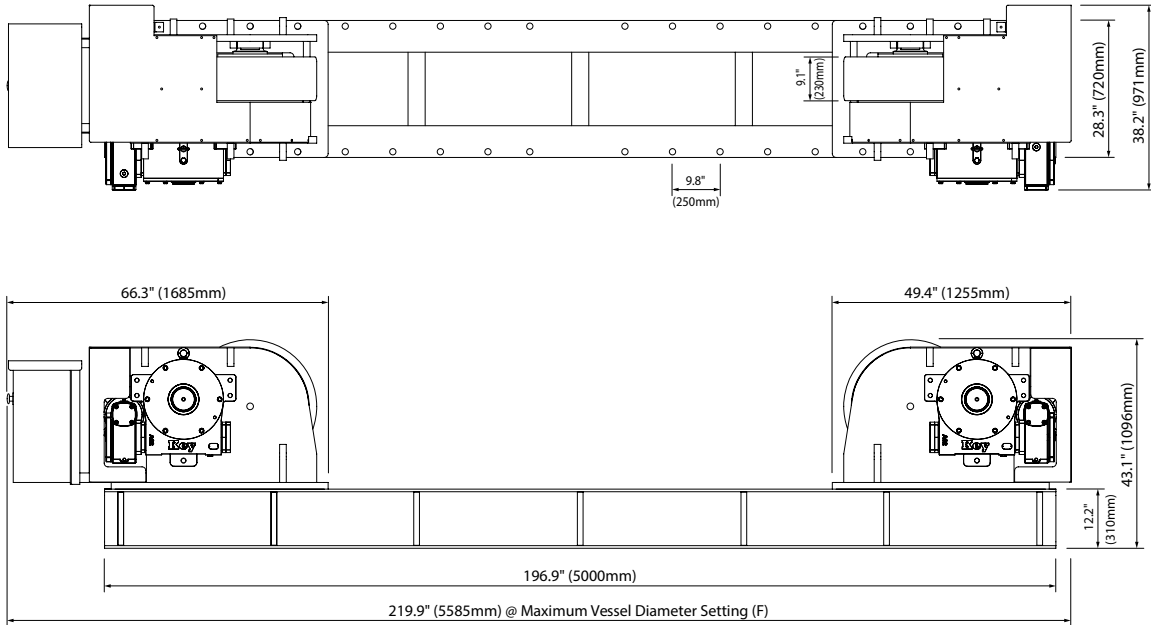
## Specifications

Model	RDA CR300-S NA turning roll set (drive and idler)
Load Carrying Capacity, Drive	150 ton maximum
Load Carrying Capacity, Idler	150 ton maximum
Load Carrying Capacity, Set	300 ton maximum
Rotation Capacity, Drive Roll	300 ton maximum
Wheel Centre Distance	38.2, 57.9, 77.6, 97.2, 116.9, 136.6 in (970, 1470, 1970, 2470, 2970, 3470 mm)
Vessel Diameter Capacity	31.5 in to 295.3 in (800 mm to 7500 mm)
Rotation Speed Range	3.9 to 41.3 in/min (100 to 1050 mm/min)
Tire Type	Steel
Wheel Size	27.6 in diameter x 9.1 in wide (700mm diameter x 230 mm wide)
Five Function Control	Push Button Pendant, 100 ft cable (forward/stop/reverse/speed control/emergency stop)
Optional Rotation Speed Foot Control	FT-1VAR-100 (single pedal) with 100 ft control cable
Optional Directional Foot Control	FT-2DIR-100 (double pedal) with 100 ft control cable
Rotation Drive Motors	2 x 5.5 kW with fan cooling
Primary Input Power	380 to 480 V, 3 phase, 50/60 Hz (optional 600 V, 3 phase, 60 Hz available)
Input Current at Rated Load	29.9 A
Weight, Drive	9921 lb (4500 kg)
Weight, Idler	7055 lb (3200 kg)
Control Box Ingress Protection Rating	IP65
Control Box Electrical Certification	UL508
Loading Capacity Certification	UL2011

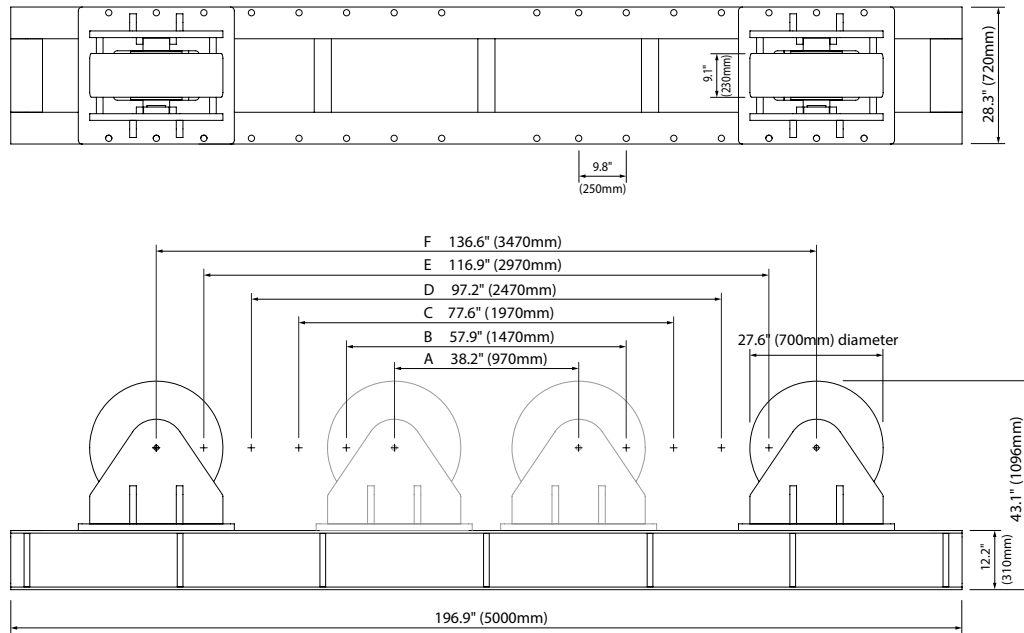
Red-D-Arc **Welderentals**, an Airgas company, rents and sells welding and weld-positioning equipment - around the world.

RDA CR300-S NA Turning Rolls 300 ton set capacity

Drive Roll



Idler Roll



Vessel Diameter Ranges

Setting	Minimum	Maximum	Setting	Minimum	Maximum	Setting	Minimum	Maximum
A	31.5" (800mm)	63" (1600mm)	C	94.5" (2400mm)	157.5" (4000mm)	E	157.5" (4000mm)	248" (6300mm)
B	63" (1600mm)	110.2" (2800mm)	D	122" (3100mm)	200.8" (5100mm)	F	185" (4700mm)	295.3" (7500mm)