

RETURN TO MAIN INDEX

# PARTS LIST FOR

# Ranger<sup>®</sup> 225

Index of Sub Assemblies

Illustration of Sub Assemblies

Illustration of Sub Assemblies

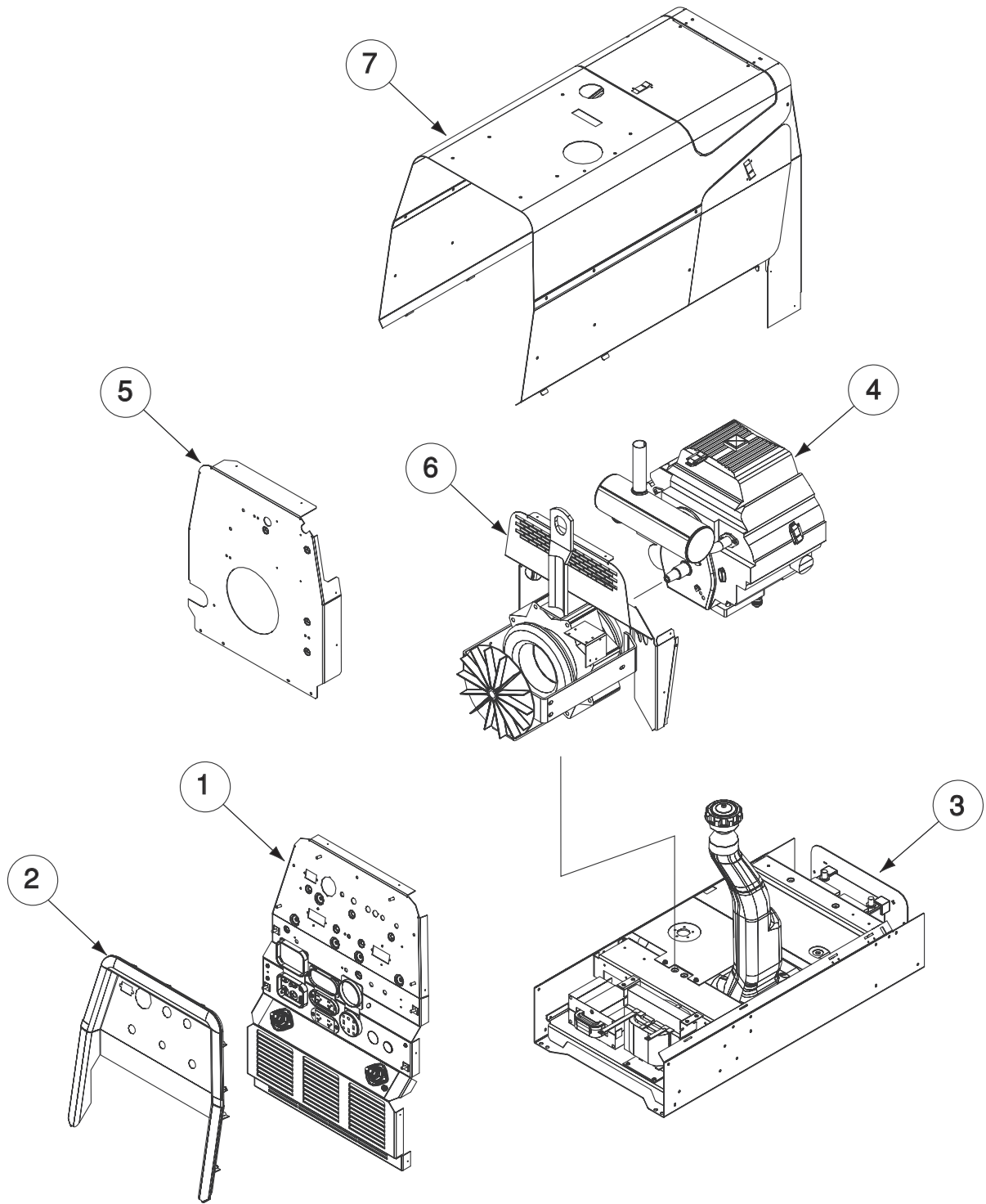
Illustration of Sub Assemblies

Illustration of Sub Assemblies

RANGER<sup>®</sup> 225



# ILLUSTRATION OF SUB ASSEMBLIES



Index of Sub Assemblies  
Index of Sub Assemblies  
Index of Sub Assemblies  
Index of Sub Assemblies



# OPTIONAL EQUIPMENT LISTING

Miscellaneous Options Available for your machine are listed below:

# Indicates a change this printing.

| DESCRIPTION .....   | PART NUMBER    |
|---|----------------|
| Accessory Package .....   | Order K702     |
| Spark Arrestor .....  | Order K1898-1  |
| Canvas Cover .....  | Order K886-2   |
| Aux. Power Plug Kit (20 Amp) .....                              | Order K802N    |
| Aux. Power Plug Kit (15 Amp) .....                              | Order K802R    |
| 4-Wire Grounding Plug .....                                     | Order T12153-9 |
| GFCI Receptacle Kit .....                                       | Order K1690-1  |
| Undercarriage (All Terrain) (See P-424) .....                   | Order K1737-1  |
| Undercarriage (Factory) .....                                   | Order K1770-1  |
| Cable Carrier Kit .....   | Order K1739-1  |
| Single Cylinder Holder .....                                    | Order K1745-1  |
| Small Welder Trailer, Heavy Duty .....                          | Order K2635-1  |
| Rotor Pulling Kit (Available to Field Service Shops Only) ..... | Order S20788   |
| Roll Cage .....   | Order K1788-1  |
| Full KVA Adapter Kit .....                                      | Order K1816-1  |



Index of Sub Assemblies

MISCELLANEOUS ITEMS  
(THESE ITEMS ARE NOT ILLUSTRATED)

# Indicates a change this printing.

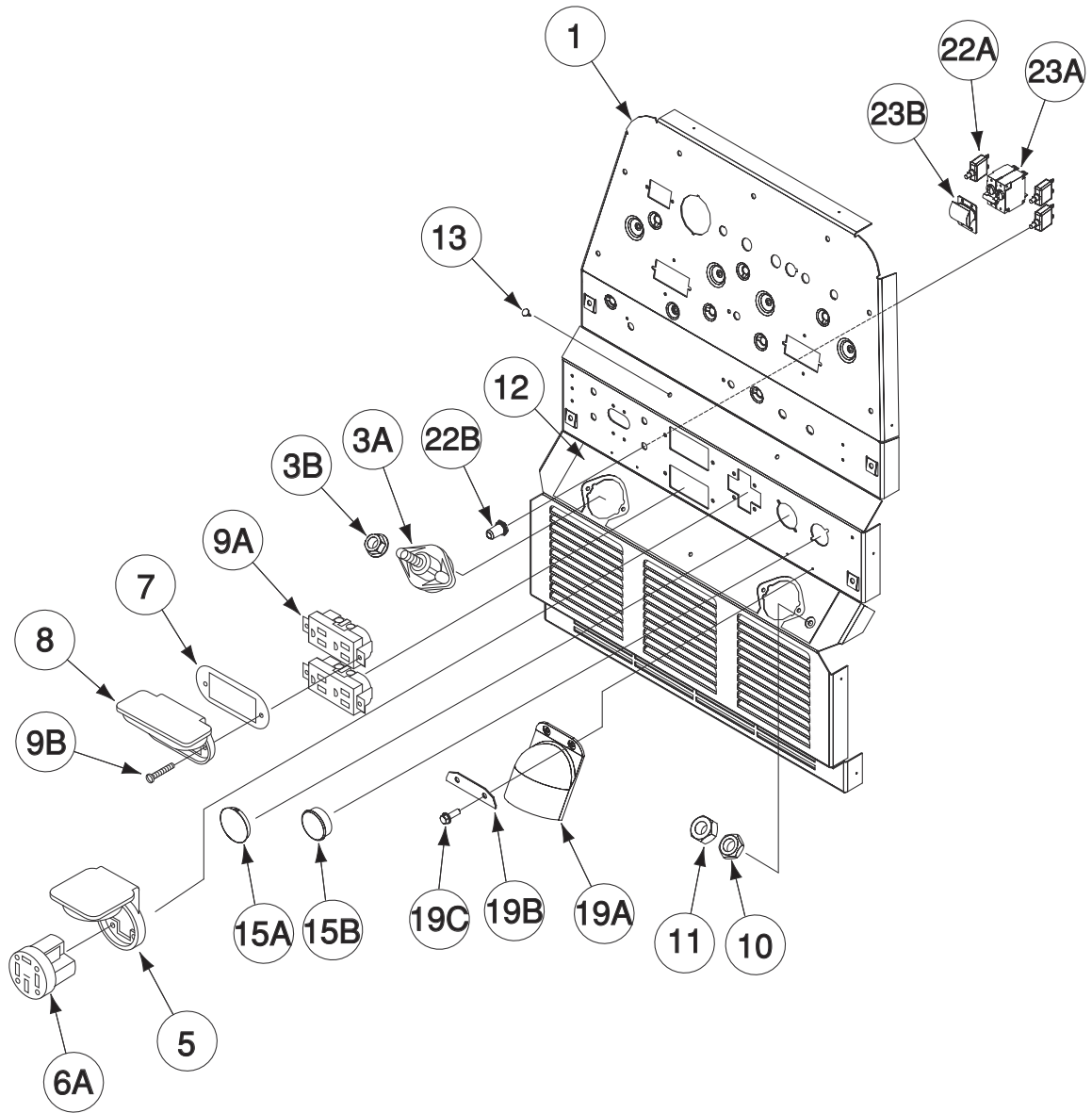
Use only the parts marked "x" in the column under the heading number called for in the model index page.

| ITEM | DESCRIPTION          | PART NO.   | QTY. | 1 | 2 | 3 | 4 | 5 | 6 | 7 | 8 | 9 |
|------|----------------------|------------|------|---|---|---|---|---|---|---|---|---|
|      | Plug & Lead Assembly | S18250-889 | 1    | X |   |   |   |   |   |   |   |   |



Index of Sub Assemblies

# Case Front Assembly



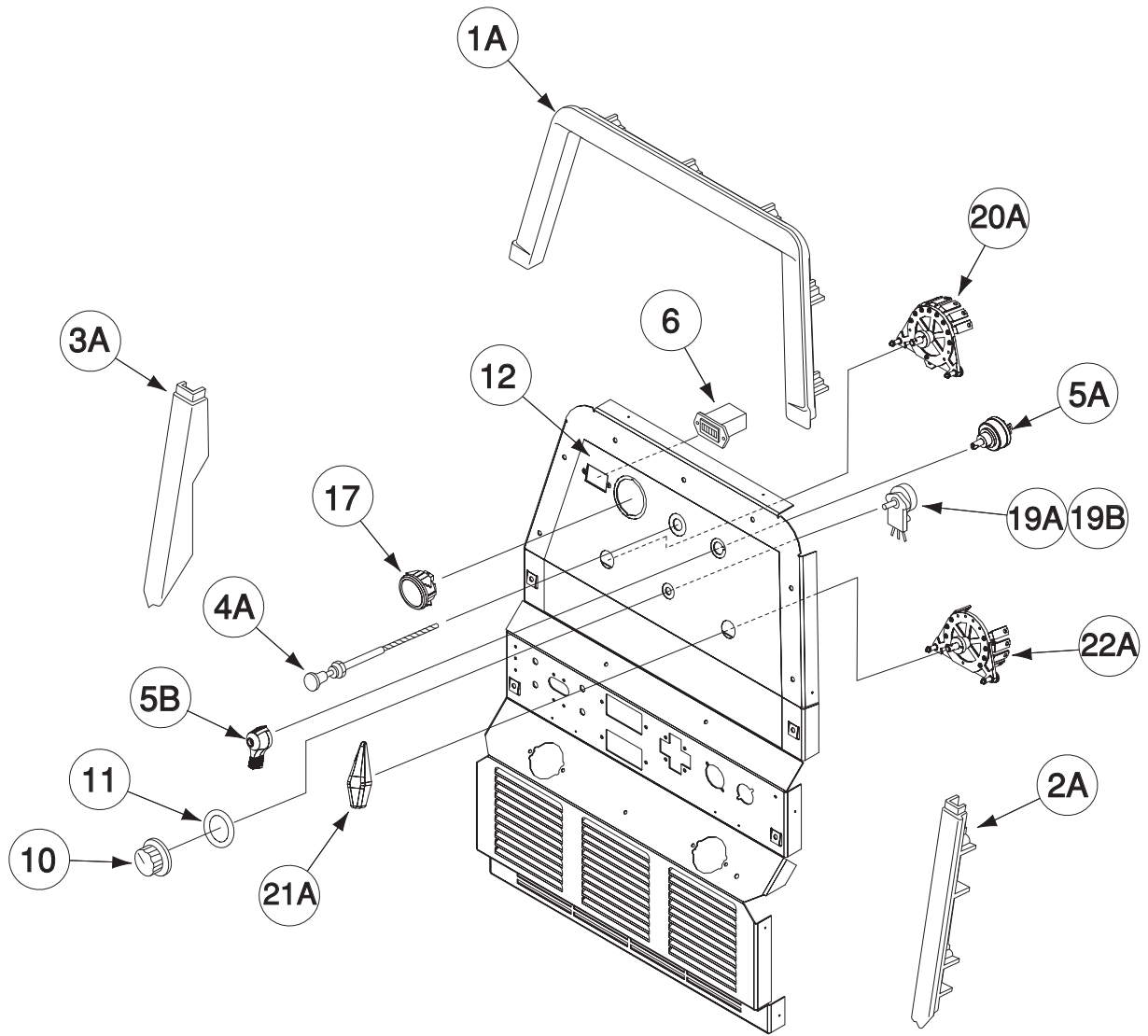
# Indicates a change this printing.

Use only the parts marked "x" in the column under the heading number called for in the model index page.

| ITEM | DESCRIPTION                              | PART NO.  | QTY. | 1 | 2 | 3 | 4 | 5 | 6 | 7 | 8 | 9 |
|------|--|-----------|------|---|---|---|---|---|---|---|---|---|
| 1    | Case Front                               | G3860-8   | 1    | X |   |   |   |   |   |   |   |   |
| 3A   | Output Terminal Assembly, Includes:      | T14166-9  | 2    | X |   |   |   |   |   |   |   |   |
| 3B   | Output Stud Nut                          | T3960     | 2    | X |   |   |   |   |   |   |   |   |
| 3C   | 1/2-13 x .75 HHCS (Not Shown)            | CF000020  | 2    | X |   |   |   |   |   |   |   |   |
| 3D   | Self Tapping Screw (Not Shown)           | S8025-91  | 4    | X |   |   |   |   |   |   |   |   |
| 3E   | 1/2-13 x .875 HHCS (Not Shown)           | CF000344  | 2    | X |   |   |   |   |   |   |   |   |
| 3F   | Plain Washer (Not Shown)                 | S9262-1   | 2    | X |   |   |   |   |   |   |   |   |
| 3G   | Lock Washer (Not Shown)                  | E106A-15  | 2    | X |   |   |   |   |   |   |   |   |
| 5    | Receptacle Cover                         | M18861    | 1    | X |   |   |   |   |   |   |   |   |
| 6A   | Receptacle, Single                       | S18907-2  | 1    | X |   |   |   |   |   |   |   |   |
| 6B   | Lock Washer (Not Shown)                  | T9695-3   | 4    | X |   |   |   |   |   |   |   |   |
| 6C   | #8-32 HN (Not Shown)                     | CF000042  | 4    | X |   |   |   |   |   |   |   |   |
| 7    | Receptacle, Gasket                       | S21088    | 2    | X |   |   |   |   |   |   |   |   |
| 8    | Receptacle Cover                         | M16996    | 2    | X |   |   |   |   |   |   |   |   |
| 9A   | Receptacle, Duplex                       | S20184    | 2    | X |   |   |   |   |   |   |   |   |
| 9B   | Thread Forming Screw                     | S9225-63  | 4    | X |   |   |   |   |   |   |   |   |
| 9C   | Speed Nut, #10-24 (Not Shown)            | T11525-1  | 4    | X |   |   |   |   |   |   |   |   |
| 10   | 1/4-20 HJLN                              | T9187-1   | 1    | X |   |   |   |   |   |   |   |   |
| 11   | 1/4-20 HN                                | CF000017  | 1    | X |   |   |   |   |   |   |   |   |
| 12   | Rating Plate                             | L15163    | 1    | X |   |   |   |   |   |   |   |   |
| 13   | Button, Fastener                         | T14659-1  | 2    | X |   |   |   |   |   |   |   |   |
| 15A  | Plug Button                              | T10397-10 | 1    | X |   |   |   |   |   |   |   |   |
| 15B  | Plug Button                              | T10397-20 | 1    | X |   |   |   |   |   |   |   |   |
| 19A  | Output Stud Cover                        | M20007    | 2    | X |   |   |   |   |   |   |   |   |
| 19B  | Output Stud Cover Plate                  | S25669    | 2    | X |   |   |   |   |   |   |   |   |
| 19C  | Thread Forming Screw                     | S9225-66  | 4    | X |   |   |   |   |   |   |   |   |
| 22A  | Circuit Breaker - 20A, 250VAC, 50VDC     | T12287-38 | 3    | X |   |   |   |   |   |   |   |   |
| 22B  | Sealing Boot                             | S22061-2  | 3    | X |   |   |   |   |   |   |   |   |
| 23A  | Circuit Breaker - 40A, 2 Pole, Includes: | M20585-1  | 1    | X |   |   |   |   |   |   |   |   |
| 23B  | Circuit Breaker Cover Seal               | S24911-2  | 1    | X |   |   |   |   |   |   |   |   |
| 23C  | Sems Screw (Not Shown)                   | T10082-30 | 4    | X |   |   |   |   |   |   |   |   |
| 23D  | Lock Washer (Not Shown)                  | T4291-A   | 4    | X |   |   |   |   |   |   |   |   |

Index of Sub Assemblies  
 Sub Assembly Illustration  
 Index of Sub Assemblies  
 Sub Assembly Illustration  
 Index of Sub Assemblies  
 Sub Assembly Illustration  
 Index of Sub Assemblies  
 Sub Assembly Illustration

# Control Panel Assembly



Index of Sub Assemblies

Part Numbers

Index of Sub Assemblies

Part Numbers

Index of Sub Assemblies

Part Numbers

Index of Sub Assemblies

Part Numbers



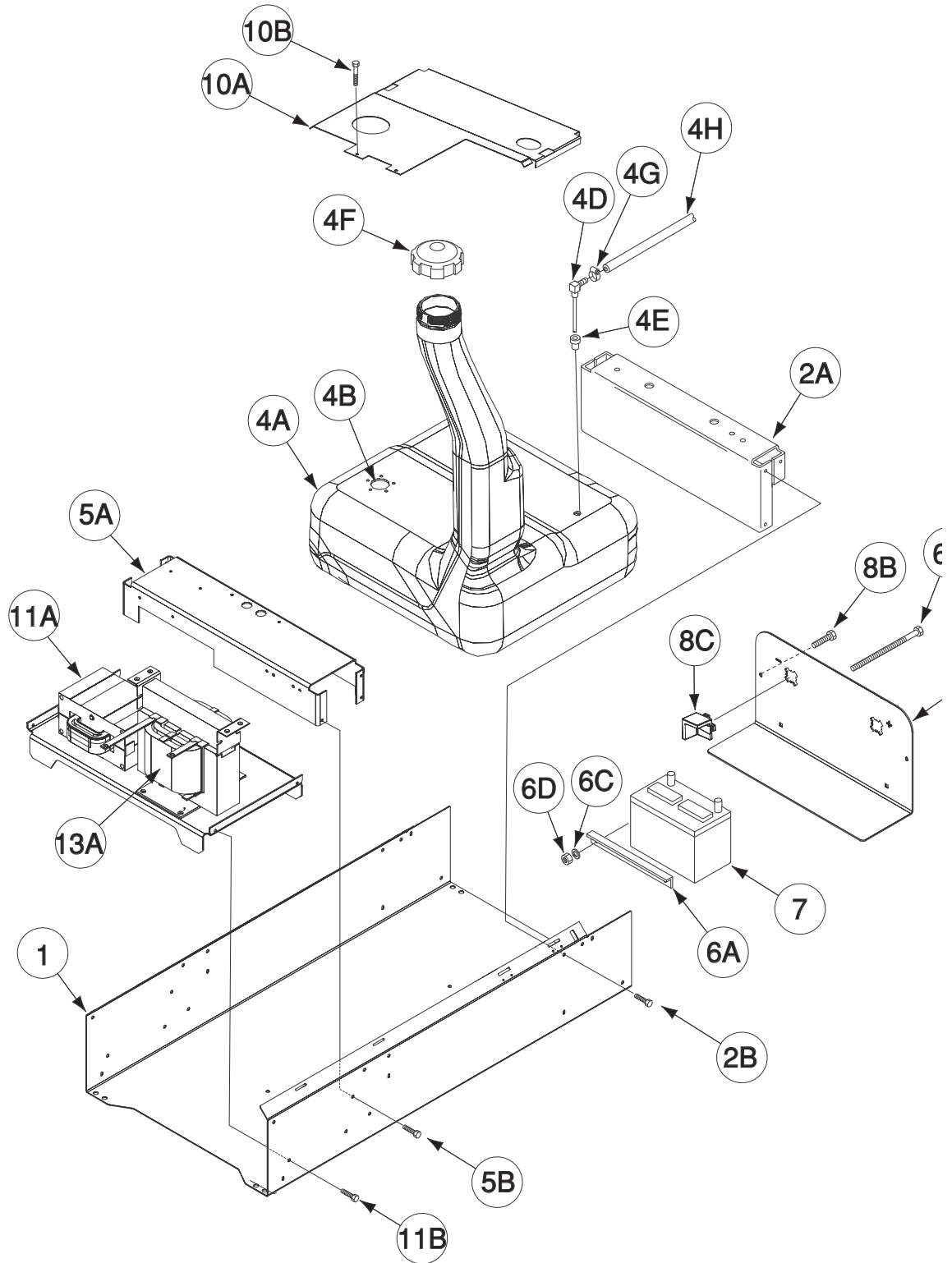
# Indicates a change this printing.

Use only the parts marked "x" in the column under the heading number called for in the model index page.

| ITEM | DESCRIPTION                         | PART NO.   | QTY. | 1 | 2 | 3 | 4 | 5 | 6 | 7 | 8 | 9 |
|------|-------------------------------------|------------|------|---|---|---|---|---|---|---|---|---|
| 1A   | Top Bezel                           | G3593      | 1    | X |   |   |   |   |   |   |   |   |
| 1B   | Self Tapping Screw (Not Shown)      | S24738-1   | 7    | X |   |   |   |   |   |   |   |   |
| 2A   | Right Bezel                         | G3594-1    | 1    | X |   |   |   |   |   |   |   |   |
| 2B   | Self Tapping Screw (Not Shown)      | S24738-1   | 2    | X |   |   |   |   |   |   |   |   |
| 3A   | Left Bezel                          | G3594-2    | 1    | X |   |   |   |   |   |   |   |   |
| 3B   | Self Tapping Screw (Not Shown)      | S24738-1   | 2    | X |   |   |   |   |   |   |   |   |
| 4A   | Choke Control                       | S7525-21   | 1    | X |   |   |   |   |   |   |   |   |
| 4B   | Choke Control Bushing (Not Shown)   | S25335     | 1    | X |   |   |   |   |   |   |   |   |
| 4C   | Plain Washer (Not Shown)            | S9262-4    | 1    | X |   |   |   |   |   |   |   |   |
| 5A   | Engine Switch                       | S25686     | 1    | X |   |   |   |   |   |   |   |   |
| 5B   | Engine Switch Handle                | S25718     | 1    | X |   |   |   |   |   |   |   |   |
| 6    | Hour Meter (Snap-In)                | S17475-7   | 1    | X |   |   |   |   |   |   |   |   |
| 10   | Knob                                | T10491-1   | 1    | X |   |   |   |   |   |   |   |   |
| 11   | "O" Ring                            | T13483-7   | 1    | X |   |   |   |   |   |   |   |   |
| 12   | Nameplate - Ranger® 225             | G6613      | 1    | X |   |   |   |   |   |   |   |   |
| 19   | Harness, Includes:                  | G4810-2    | 1    | X |   |   |   |   |   |   |   |   |
| 19A  | Potentiometer (10K)                 | T10812-112 | 1    | X |   |   |   |   |   |   |   |   |
| 19B  | Potentiometer Spacer                | S18280     | 1    | X |   |   |   |   |   |   |   |   |
| 20A  | Selector Switch & Mounting Assembly | M17013-4   | 1    | X |   |   |   |   |   |   |   |   |
| 20B  | Lock Nut (Not Shown)                | T9187-9    | 2    | X |   |   |   |   |   |   |   |   |
| 20C  | Spacer (Not Shown)                  | S21985     | 1    | X |   |   |   |   |   |   |   |   |
| 20D  | Thread Forming Screw (Not Shown)    | S9225-4    | 1    | X |   |   |   |   |   |   |   |   |
| 21A  | Control Handle                      | M16493     | 1    | X |   |   |   |   |   |   |   |   |
| 21B  | Self Tapping Screw (Not Shown)      | S8025-78   | 1    | X |   |   |   |   |   |   |   |   |
| 25   | Lubrication Tag (Not Shown)         | T11590-151 | 1    | X |   |   |   |   |   |   |   |   |
| 26   | Hang Tag (Not Shown)                | L15174     | 1    | X |   |   |   |   |   |   |   |   |

Index of Sub Assemblies  
 Sub Assembly Illustration  
 Index of Sub Assemblies  
 Sub Assembly Illustration  
 Index of Sub Assemblies  
 Sub Assembly Illustration  
 Index of Sub Assemblies  
 Sub Assembly Illustration

# Base/Fuel Tank/Battery Assembly



# Indicates a change this printing.

Use only the parts marked "x" in the column under the heading number called for in the model index page.

| ITEM | DESCRIPTION  | PART NO.   | QTY. | 1 | 2 | 3 | 4 | 5 | 6 | 7 | 8 | 9 |
|------|--|------------|------|---|---|---|---|---|---|---|---|---|
| 1    | Base   | G3870-2    | 1    | X |   |   |   |   |   |   |   |   |
| 2A   | Engine Cross Support                                       | L11147-1   | 1    | X |   |   |   |   |   |   |   |   |
| 2B   | Thread Forming Screw                                       | S9225-68   | 6    | X |   |   |   |   |   |   |   |   |
| 4    | Fuel Tank & Assembly, Includes:                            | L12164-3   | 1    | X |   |   |   |   |   |   |   |   |
| 4A   | Fuel Tank  | <b>NSS</b> | 1    | X |   |   |   |   |   |   |   |   |
| 4B   | Fuel Cap   | S20541     | 1    | X |   |   |   |   |   |   |   |   |
| 4C   | Fuel Fitting Assembly                                      | S19565-4   | 1    | X |   |   |   |   |   |   |   |   |
| 4D   | Rubber Plug  | S19563     | 1    | X |   |   |   |   |   |   |   |   |
| 4G   | Hose Clamp   | T13777-7   | 2    | X |   |   |   |   |   |   |   |   |
| 4H   | Flex Tube  | T10642-275 | 1    | X |   |   |   |   |   |   |   |   |
| 5A   | Stator Support   | L12329-1   | 1    | X |   |   |   |   |   |   |   |   |
| 5B   | Thread Forming Screw (Not Shown)                           | S9225-68   | 6    | X |   |   |   |   |   |   |   |   |
| 6A   | Battery Bracket  | S27320-1   | 1    | X |   |   |   |   |   |   |   |   |
| 6B   | J-Bolt   | T8818-14   | 2    | X |   |   |   |   |   |   |   |   |
| 6C   | Lock Washer  | E106A-2    | 2    | X |   |   |   |   |   |   |   |   |
| 6D   | Plain Washer   | S9262-98   | 2    | X |   |   |   |   |   |   |   |   |
| 6E   | 1/4-20 HN  | CF000017   | 2    | X |   |   |   |   |   |   |   |   |
| 7    | 12 Volt Storage Battery (M9399-14)                         | <b>NSS</b> | 1    | X |   |   |   |   |   |   |   |   |
| 9A   | Battery Cable (Neg.) (Not Shown)                           | S8070-20   | 1    | X |   |   |   |   |   |   |   |   |
| 9B   | Battery Cable (Pos.) (Not Shown)                           | S8070-11   | 1    | X |   |   |   |   |   |   |   |   |
| 9C   | Plastic Cap (Not Shown) (Covers Negative Battery Terminal) | T14654     | 1    | X |   |   |   |   |   |   |   |   |
| 10A  | Fuel Tank Brace  | G4003-2    | 1    | X |   |   |   |   |   |   |   |   |
| 11A  | Reactor Assembly   | L12326-2   | 1    | X |   |   |   |   |   |   |   |   |
| 11B  | Self Tapping Screw   | S9225-68   | 2    | X |   |   |   |   |   |   |   |   |
| 13A  | Choke Coil & Lamination Assembly                           | L9036-3    | 1    | X |   |   |   |   |   |   |   |   |
| 13B  | Self Tapping Screw   | S9225-68   | 4    | X |   |   |   |   |   |   |   |   |
| 20   | Fuel Level Decal   | S28151     | 2    | X |   |   |   |   |   |   |   |   |



Index of Sub Assemblies  
 Sub Assembly Illustration  
 Index of Sub Assemblies  
 Sub Assembly Illustration  
 Index of Sub Assemblies  
 Sub Assembly Illustration  
 Index of Sub Assemblies  
 Sub Assembly Illustration

# Engine Assembly

Index of Sub Assemblies

Part Numbers

Index of Sub Assemblies

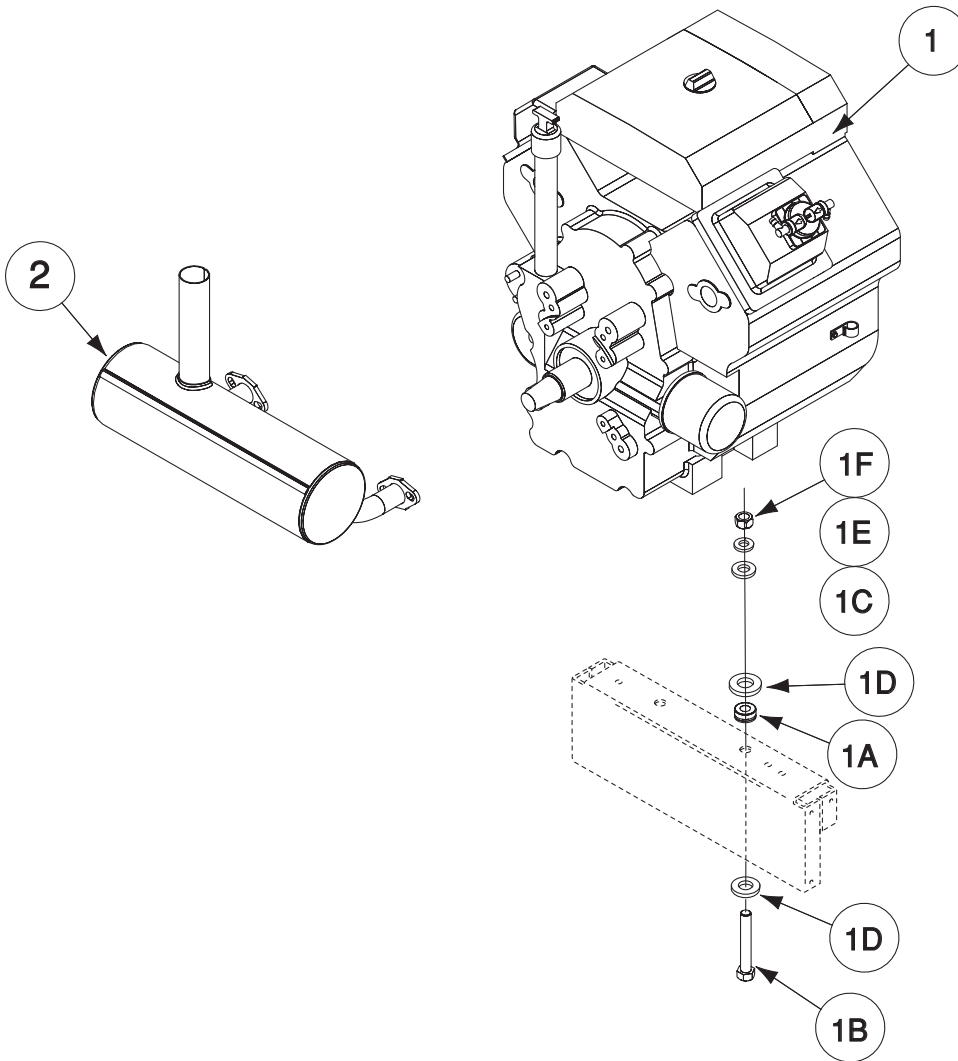
Part Numbers

Index of Sub Assemblies

Part Numbers

Index of Sub Assemblies

Part Numbers



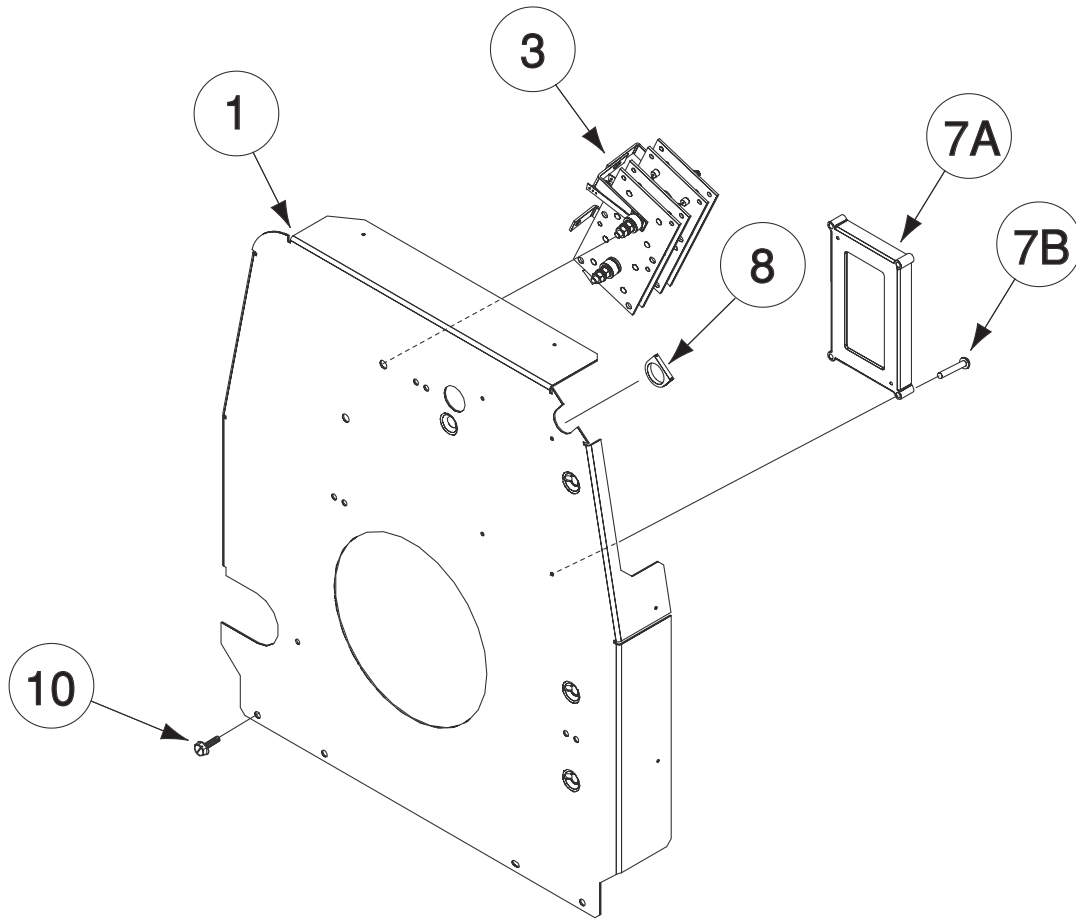
# Indicates a change this printing.

Use only the parts marked "x" in the column under the heading number called for in the model index page.

| ITEM | DESCRIPTION                                     | PART NO.   | QTY. | 1 | 2 | 3 | 4 | 5 | 6 | 7 | 8 | 9 |
|------|---|------------|------|---|---|---|---|---|---|---|---|---|
| 1    | Engine - Kohler (M21300)                        | <b>NSS</b> | 1    | X |   |   |   |   |   |   |   |   |
| 1A   | Rubber Mounting                                 | S24344     | 2    | X |   |   |   |   |   |   |   |   |
| 1B   | 3/8-16 x 2.50 HHCS                              | CF000196   | 2    | X |   |   |   |   |   |   |   |   |
| 1C   | Plain Washer                                    | S9262-120  | 2    | X |   |   |   |   |   |   |   |   |
| 1D   | Plain Washer                                    | S9262-113  | 6    | X |   |   |   |   |   |   |   |   |
| 1E   | Lock Washer                                     | E106A-16   | 2    | X |   |   |   |   |   |   |   |   |
| 1F   | 3/8-16 HN                                       | CF000067   | 2    | X |   |   |   |   |   |   |   |   |
| 2    | Muffler Assembly (Kohler)                       | G3574-4    | 1    | X |   |   |   |   |   |   |   |   |
| 2A   | Exhaust Gasket (Supplied w/Engine) (Not Shown)  | M16999-1   | 2    | X |   |   |   |   |   |   |   |   |
| 4    | Oil Drain Valve (Supplied w/Engine) (Not Shown) | <b>NSS</b> | 1    | X |   |   |   |   |   |   |   |   |
| 5A   | Outlet Pipe Elbow (Not Shown)                   | M16980-1   | 1    | X |   |   |   |   |   |   |   |   |
| 5B   | Spark Arrestor Clamp (Not Shown)                | S20462     | 1    | X |   |   |   |   |   |   |   |   |
| 10A  | Flex Tube (Not Shown) (Supplied w/Engine)       | <b>NSS</b> | 1    | X |   |   |   |   |   |   |   |   |
| 10B  | Fuel Filter (Not Shown) (Supplied w/Engine)     | <b>NSS</b> | 1    | X |   |   |   |   |   |   |   |   |

Index of Sub Assemblies  
 Sub Assembly Illustration  
 Index of Sub Assemblies  
 Sub Assembly Illustration  
 Index of Sub Assemblies  
 Sub Assembly Illustration  
 Index of Sub Assemblies  
 Sub Assembly Illustration

# Blower Baffle Assembly



Index of Sub Assemblies

Part Numbers

Index of Sub Assemblies

Part Numbers

Index of Sub Assemblies

Part Numbers

Index of Sub Assemblies

Part Numbers

# Indicates a change this printing.

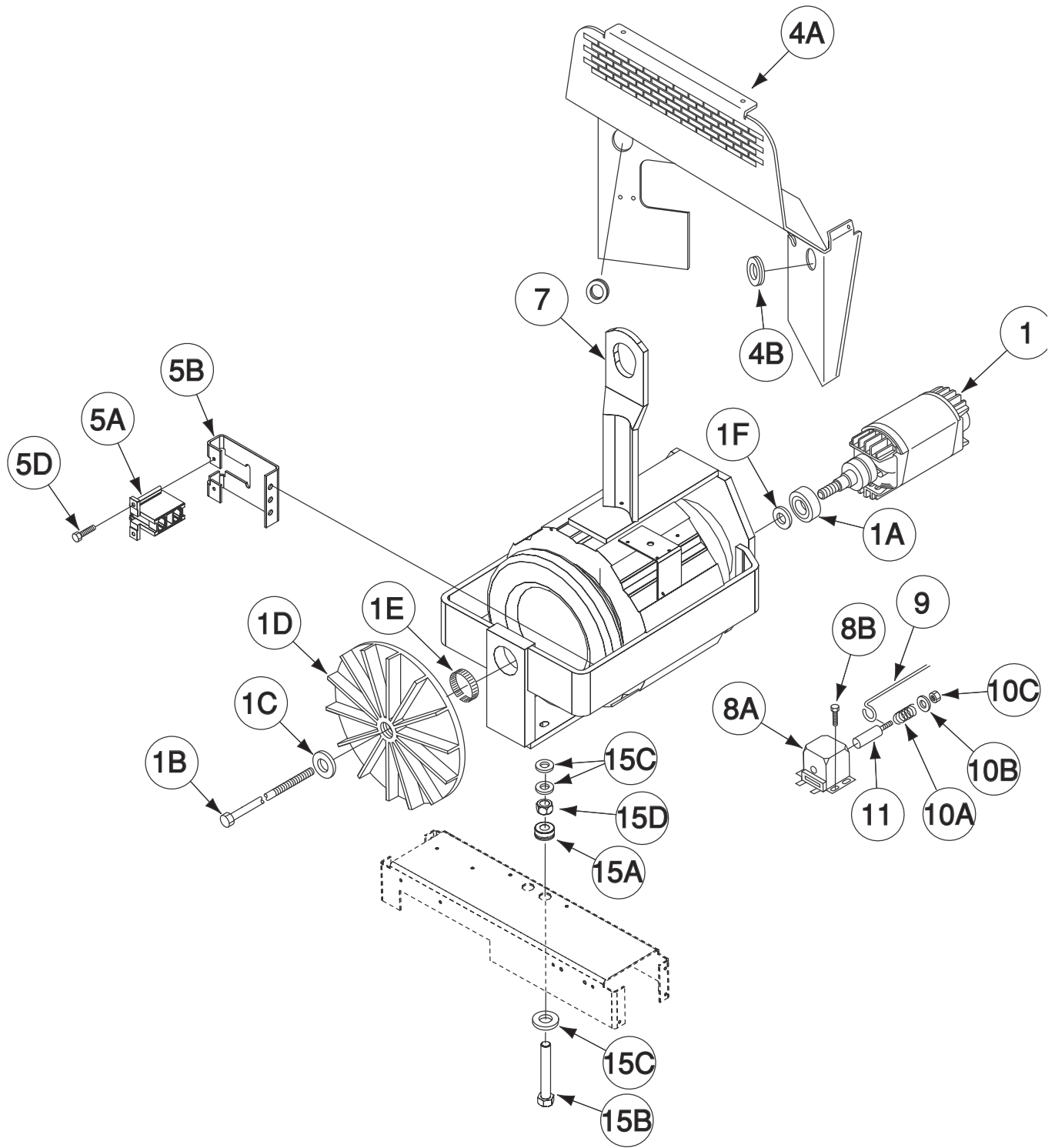
Use only the parts marked "x" in the column under the heading number called for in the model index page.

| ITEM | DESCRIPTION                      | PART NO.   | QTY. | 1 | 2 | 3 | 4 | 5 | 6 | 7 | 8 | 9 |
|------|----------------------------------|------------|------|---|---|---|---|---|---|---|---|---|
| 1A   | Baffle                           | G4730-1    | 1    | X |   |   |   |   |   |   |   |   |
| 1B   | Thread Forming Screw (Not Shown) | S9225-68   | 2    | X |   |   |   |   |   |   |   |   |
| 3    | Rectifier Assembly               | L11411-1   | 1    | X |   |   |   |   |   |   |   |   |
| 7A   | Weld Control PC Board Assembly   | L12198-[ ] | 1    | X |   |   |   |   |   |   |   |   |
| 7B   | Self Tapping Screw               | S8025-100  | 4    | X |   |   |   |   |   |   |   |   |
| 10   | Thread Forming Screw (Not Shown) | S9225-68   | 1    | X |   |   |   |   |   |   |   |   |
| 11   | Bushing                          | T12380-1   | 3    | X |   |   |   |   |   |   |   |   |

**Note:** When ordering new printed circuit boards indicate the dash number [ ] of the "Old" board that is to be replaced. This will aid Lincoln in supplying the correct and latest board along with any necessary jumpers or adapters. The dash number brackets [ ] have purposely been left blank so as to eliminate errors, confusion and updates.

Index of Sub Assemblies  
 Sub Assembly Illustration  
 Index of Sub Assemblies  
 Sub Assembly Illustration  
 Index of Sub Assemblies  
 Sub Assembly Illustration  
 Index of Sub Assemblies  
 Sub Assembly Illustration

# Stator/Rotor Assembly



Index of Sub Assemblies

Part Numbers

Index of Sub Assemblies

Part Numbers

Index of Sub Assemblies

Part Numbers

Index of Sub Assemblies

Part Numbers



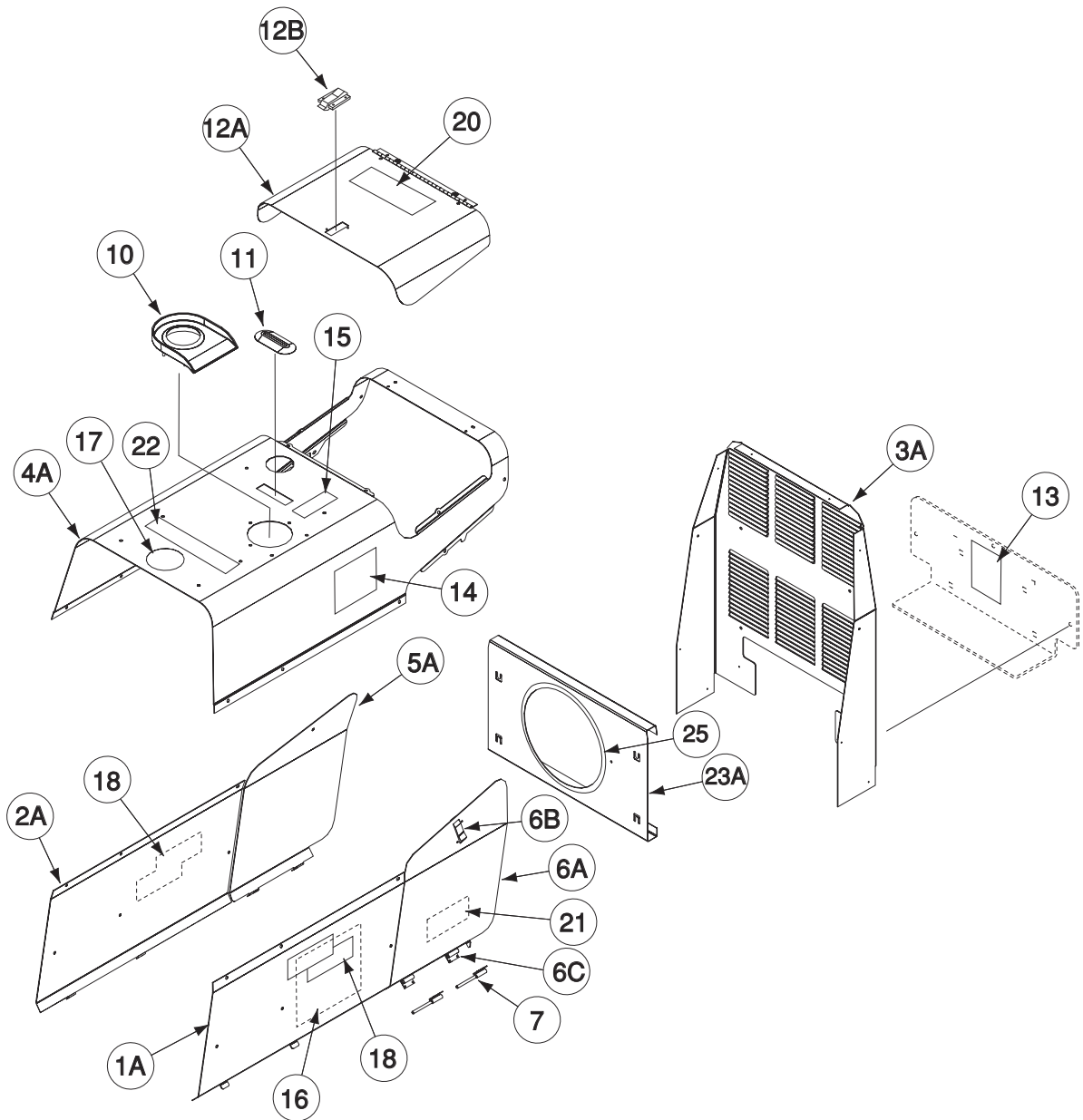
# Indicates a change this printing.

Use only the parts marked "x" in the column under the heading number called for in the model index page.

| ITEM | DESCRIPTION   | PART NO.   | QTY.                            | 1                               | 2 | 3 | 4 | 5 | 6 | 7 | 8 | 9 |
|------|---|--|---------------------------------|---------------------------------|---|---|---|---|---|---|---|---|
| 1    | Rotor & Shaft Assembly  | L9031  | 1                               | X                               |   |   |   |   |   |   |   |   |
| 1A   | Bearing   | M9300-85   | 1                               | X                               |   |   |   |   |   |   |   |   |
| 1B   | Special Hex Head Bolt   | T14843-3   | 1                               | X                               |   |   |   |   |   |   |   |   |
| 1C   | Plain Washer  | S9262-149  | 1                               | X                               |   |   |   |   |   |   |   |   |
| 1D   | Blower  | L9033  | 1                               | X                               |   |   |   |   |   |   |   |   |
| 1E   | Tolerance Ring  | S18044-9   | 1                               | X                               |   |   |   |   |   |   |   |   |
| 1F   | Centering Washer  | S20110-3   | 1                               | X                               |   |   |   |   |   |   |   |   |
| 4A   | Firewall  | G3849  | 1                               | X                               |   |   |   |   |   |   |   |   |
| 4B   | Bushing   | T12380-1   | 1                               | X                               |   |   |   |   |   |   |   |   |
| 4C   | Bushing   | T12380-6   | 1                               | X                               |   |   |   |   |   |   |   |   |
| 5A   | Brush & Brush Holder Assembly, Includes:<br>Brush Holder Cartridge<br>Brush Assembly, Includes:<br>Brush Clip<br>Compression Spring<br>Brush<br>Brush Assembly Retainer | M16158<br>G2114<br>S19480<br>S19475<br>T11862-44<br>S19474<br>M16157 | 1<br>1<br>2<br>2<br>2<br>2<br>1 | X<br>X<br>X<br>X<br>X<br>X<br>X |   |   |   |   |   |   |   |   |
| 5B   | Brush Holder Bracket  | M18925   | 1                               | X                               |   |   |   |   |   |   |   |   |
| 5C   | Self Tapping Screw (Not Shown)  | S8025-91   | 2                               | X                               |   |   |   |   |   |   |   |   |
| 5D   | 1/4-20 x 1.00 HHCS (Not Shown)  | CF000015   | 2                               | X                               |   |   |   |   |   |   |   |   |
| 5E   | Lock Washer (Not Shown)   | E106A-2  | 2                               | X                               |   |   |   |   |   |   |   |   |
| 5F   | 1/4-10 HN (Not Shown)   | CF000017   | 2                               | X                               |   |   |   |   |   |   |   |   |
| 7    | Stator Frame Assembly   | G2618-9  | 1                               | X                               |   |   |   |   |   |   |   |   |
| 7A   | 3/8-16 x 1.25 HHCS (Not Shown)  | T8833-10   | 4                               | X                               |   |   |   |   |   |   |   |   |
| 7B   | Lock Washer (Not Shown)   | E106A-4  | 4                               | X                               |   |   |   |   |   |   |   |   |
| 8A   | Solenoid Assembly   | S20752   | 1                               | X                               |   |   |   |   |   |   |   |   |
| 8B   | Self Tapping Screw  | S8025-91   | 3                               | X                               |   |   |   |   |   |   |   |   |
| 9    | Pull Wire   | S20848   | 1                               | X                               |   |   |   |   |   |   |   |   |
| 10A  | Spring  | T6778  | 1                               | X                               |   |   |   |   |   |   |   |   |
| 10B  | Plain Washer  | S9262-98   | 1                               | X                               |   |   |   |   |   |   |   |   |
| 10C  | 1/4-20 HJN  | T9187-1  | 1                               | X                               |   |   |   |   |   |   |   |   |
| 11   | Plunger   | S21020   | 1                               | X                               |   |   |   |   |   |   |   |   |
| 12   | Bracket (Not Shown)   | S21177   | 1                               | X                               |   |   |   |   |   |   |   |   |
| 13   | Bushing, Linkage Retaining (Not Shown)  | S21015   | 2                               | X                               |   |   |   |   |   |   |   |   |
| 15A  | Rubber Mounting   | S24344   | 2                               | X                               |   |   |   |   |   |   |   |   |
| 15B  | 3/8-16 x 2.50 HHB   | CF000196   | 2                               | X                               |   |   |   |   |   |   |   |   |
| 15C  | Plain Washer  | S9262-113  | 4                               | X                               |   |   |   |   |   |   |   |   |
| 15D  | 3/8-16 HN   | CF000067   | 2                               | X                               |   |   |   |   |   |   |   |   |
| 15E  | Plain Washer  | S9262-120  | 2                               | X                               |   |   |   |   |   |   |   |   |
| 15F  | Lock Washer   | E106A-16   | 2                               | X                               |   |   |   |   |   |   |   |   |
| 20   | Flex Tube (Not Shown)   | T10642-242   | 1                               | X                               |   |   |   |   |   |   |   |   |

Index of Sub Assemblies  
 Sub Assembly Illustration  
 Index of Sub Assemblies  
 Sub Assembly Illustration  
 Index of Sub Assemblies  
 Sub Assembly Illustration  
 Index of Sub Assemblies  
 Sub Assembly Illustration

# Covers & Case Back Assembly



Index of Sub Assemblies

Part Numbers

Index of Sub Assemblies

Part Numbers

Index of Sub Assemblies

Part Numbers

Index of Sub Assemblies

Part Numbers

# Indicates a change this printing.

Use only the parts marked "x" in the column under the heading number called for in the model index page.

| ITEM | DESCRIPTION                      | PART NO.       | QTY. | 1 | 2 | 3 | 4 | 5 | 6 | 7 | 8 | 9 |
|------|----------------------------------|----------------|------|---|---|---|---|---|---|---|---|---|
| 1A   | Case Side - Right                | G3510          | 1    | X |   |   |   |   |   |   |   |   |
| 1B   | Thread Forming Screw (Not Shown) | S9225-68       | 3    | X |   |   |   |   |   |   |   |   |
| 2A   | Case Side - Left                 | G3511          | 1    | X |   |   |   |   |   |   |   |   |
| 2B   | Thread Forming Screw (Not Shown) | S9225-68       | 3    | X |   |   |   |   |   |   |   |   |
| 3A   | Case Back                        | G3865-3        | 1    | X |   |   |   |   |   |   |   |   |
| 3B   | Thread Forming Screw (Not Shown) | S9225-68       | 4    | X |   |   |   |   |   |   |   |   |
| 4A   | Roof                             | G3882-4        | 1    | X |   |   |   |   |   |   |   |   |
| 4B   | Thread Forming Screw (Not Shown) | S9225-68       | 16   | X |   |   |   |   |   |   |   |   |
| 4C   | Door Bumper (Not Shown)          | T14882-1       | 6    | X |   |   |   |   |   |   |   |   |
| 5A   | Left Engine Cover                | L11529-1       | 1    | X |   |   |   |   |   |   |   |   |
| 5B   | Thread Forming Screw (Not Shown) | S9225-66       | 1    | X |   |   |   |   |   |   |   |   |
| 5C   | Speed Nut (Not Shown)            | T11525-5       | 1    | X |   |   |   |   |   |   |   |   |
| 6A   | Right Engine Cover, Includes:    | L11528         | 1    | X |   |   |   |   |   |   |   |   |
| 6B   | Latch                            | S24694         | 1    | X |   |   |   |   |   |   |   |   |
| 6C   | Hinge                            | S24348         | 2    | X |   |   |   |   |   |   |   |   |
| 6D   | Rivet (Not Shown)                | T12584-9       | 6    | X |   |   |   |   |   |   |   |   |
| 7    | Hinge Assembly                   | S24295-2       | 2    | X |   |   |   |   |   |   |   |   |
| 10   | Fuel Trough                      | L12084         | 1    | X |   |   |   |   |   |   |   |   |
| 11   | Cover Seal                       | S12934-1       | 1    | X |   |   |   |   |   |   |   |   |
| 12A  | Engine Top Cover Welded Assembly | G3514          | 1    | X |   |   |   |   |   |   |   |   |
| 12B  | Latch                            | S24694         | 1    | X |   |   |   |   |   |   |   |   |
| 12C  | Door Bumper (Not Shown)          | T14882         | 2    | X |   |   |   |   |   |   |   |   |
| 12D  | Rivet (Not Shown)                | T12584-6       | 2    | X |   |   |   |   |   |   |   |   |
| 12E  | Rivet (Not Shown)                | T12584-9       | 2    | X |   |   |   |   |   |   |   |   |
| 14   | Warning Label                    | M16197         | 1    | X |   |   |   |   |   |   |   |   |
| 15   | Fuel Warning Decal               | T13086-108     | 1    | X |   |   |   |   |   |   |   |   |
| 16   | Wiring Diagram                   | M22194         | 1    | X |   |   |   |   |   |   |   |   |
| 17   | Warranty Decal                   | Part of L15163 | 1    | X |   |   |   |   |   |   |   |   |
| 18   | Logo Decal                       | S27368-5       | 2    | X |   |   |   |   |   |   |   |   |
| 20   | Engine Decal                     | S26884         | 1    | X |   |   |   |   |   |   |   |   |
| 21   | Oil Drain Decal                  | S24665         | 1    | X |   |   |   |   |   |   |   |   |
| 22   | CO Warning Decal                 | M21436         | 1    | X |   |   |   |   |   |   |   |   |
| 23   | Foam Ring                        | S28080         | 1    | X |   |   |   |   |   |   |   |   |
| 28A  | Battery Cover                    | M22185         | 1    | X |   |   |   |   |   |   |   |   |
| 28B  | Thread Forming Screw             | S9225-68       | 3    | X |   |   |   |   |   |   |   |   |
| 30   | Battery Caution Decal            | S17851         | 1    | X |   |   |   |   |   |   |   |   |
| 31   | Warning Decal                    | S25896         | 1    | X |   |   |   |   |   |   |   |   |
| 32   | Family Name Decal                | M21952-1       | 2    | X |   |   |   |   |   |   |   |   |

Index of Sub Assemblies  
 Sub Assembly Illustration  
 Index of Sub Assemblies  
 Sub Assembly Illustration  
 Index of Sub Assemblies  
 Sub Assembly Illustration  
 Index of Sub Assemblies  
 Sub Assembly Illustration

# NOTES

---

Index of Sub Assemblies

Index of Sub Assemblies

Index of Sub Assemblies

Index of Sub Assemblies

RANGER® 225

