




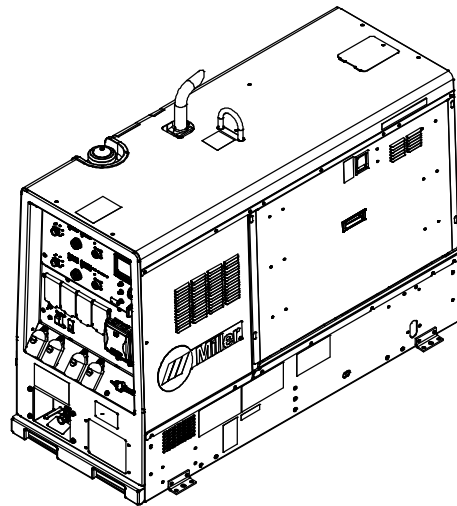
Processes

-  MIG (GMAW) Welding
Flux Cored (FCAW) Welding
-  Stick (SMAW) Welding
-  TIG (GTAW) Welding
-  Air Carbon Arc (CAC-A)
Cutting and Gouging

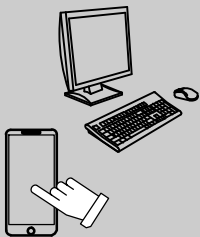
Description

-   
- Engine Driven Welder/Generator And
Air Compressor

Big Blue[®] 600 Air Pak[®]
Big Blue[®] 800 Duo Pro[®]
Big Blue[®] 800 Duo Air Pak[®]
Eff w/Serial No. MH260921R And Following



PARTS MANUAL



For product information,
Owner's Manual translations,
and more, visit

www.MillerWelds.com

SECTION 1 – PARTS LIST

☞ Hardware is common and not available unless listed.

☞ Big Blue 800 Duo Air Pak model shown.

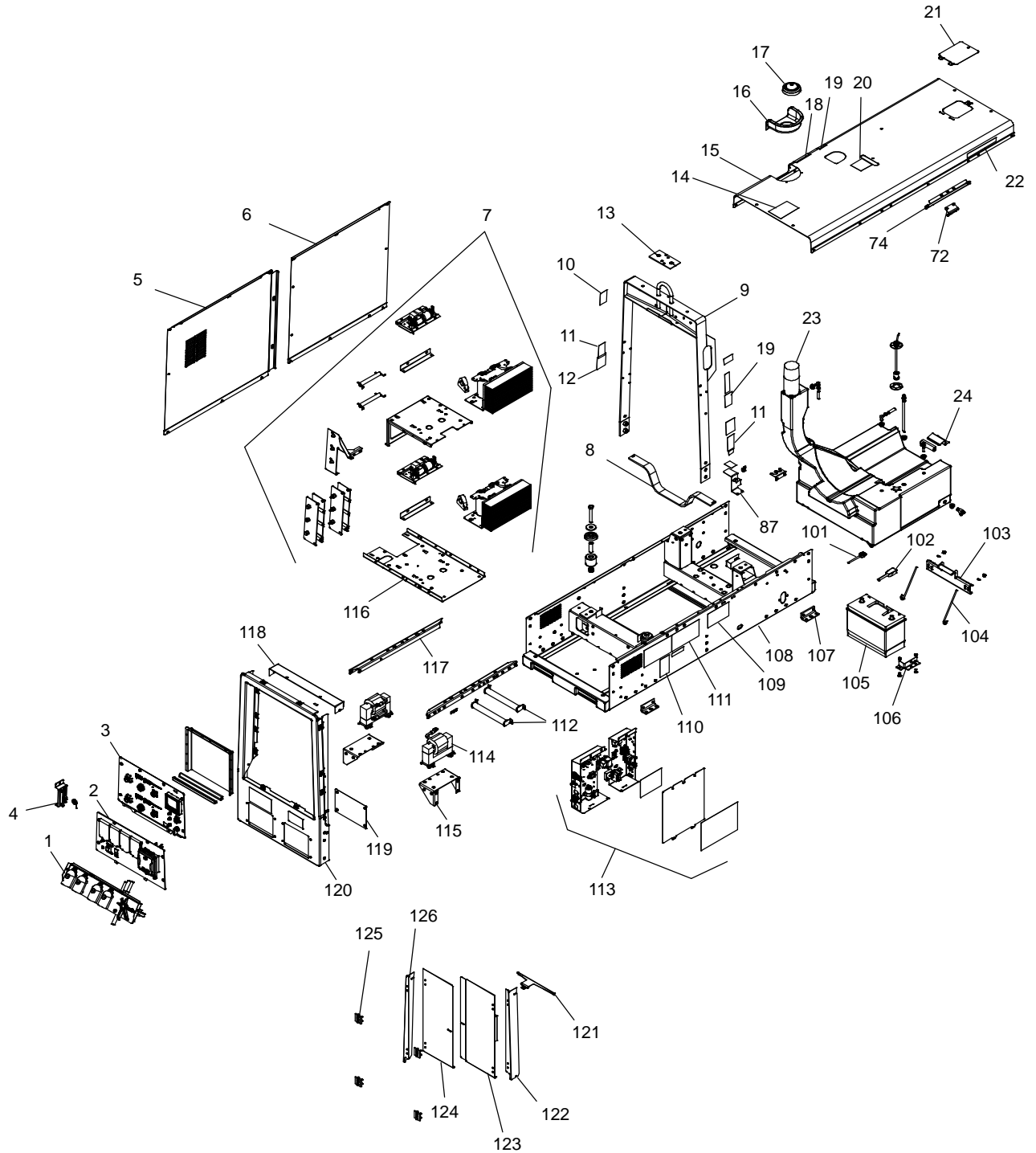
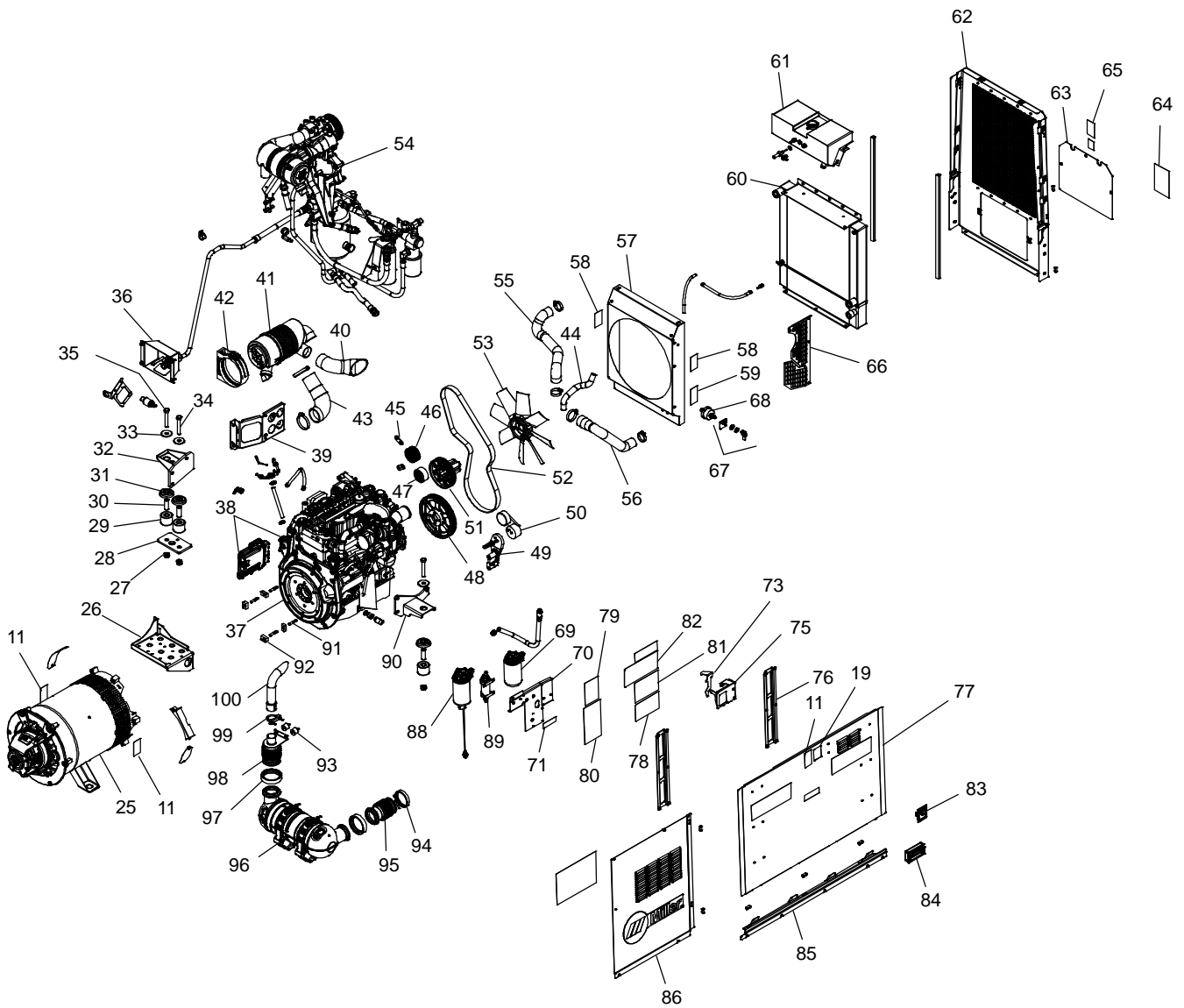


Figure 1-1. Main Assembly

Eff w/Serial No. MH260921R And Following



907752

Eff w/Serial No. MH260921R And Following

Item No.	Dia. Mkgs.	Part No.	Description	Quantity
Figure 1-1. Main Assembly				
1		Figure 1-5	Weld Output Panel	1
2		Figure 1-7	Auxiliary Power Panel	1
3		Figure 1-3, Figure 1-4	Engine & Weld Control Front Panel	1
4		252195	Bracket, Mtg Strip Term 6 Pole	1
	TE1	172661	Block, Stud Connection 6 Position	1
5		260581	Panel, Generator LH (800 Models)	1
5		259407	Panel, Generator LH (600 Models)	1
6		259533	Panel, Engine Extension LH	1
7		Figure 1-9, Figure 1-10	Weld Output Module	1
8		218086	Bracket, Holddown Fuel Tank	1
9		+255669	Upright, Center Assy	1
10		272333	Label, Warning Hot Parts (En/Fr-Sym)	1
11		272334	Label, Warning Moving Parts (En/Fr-Sym)	5
12		272331	Label, Notice Do Not Spray Water (En/Fr-Sym)	2
13		189464	Seal, Weather Lift Eye	1
14		272340	Label, Danger Using A Generator Indoor (En/Fr/Sp-Sym)	1
15		+259206	Cover, Top (Prior to NA230715R)	1
15		+287554	Cover, Top (Eff w/NA230715R)	1
		024103	Blank, Snap-In Nyl .750 Mtg Hole Black (Eff w/NA230715R)	2
16		189052	Grommet, Plastic Neck Filler Fuel	1
17		254678	Cap, Tank Screw-on 3.500 In W/Vent W/Lanyard 8in	1
18		227728	Label, Warning Use Diesel Fuel Only (Trilingual)	1
19		272333	Label, Warning Hot Parts (En/Fr-Sym)	3
20		272339	Label, Warning Falling Equipment (En/Fr-Sym)	1
21		201851	Cover, Radiator Access	1
22		227731	Label, Caution Do Not Use Ether (Trilingual)	1
23		268932	Tank, Fuel (Consisting Of)	1
		124253	Bushing, Tank Fuel	3
		189912	Fitting, Stl Barbed Elbow W/.047 In Orf Zinc Pld	1
		189913	Fitting, Stl Barbed Elbow Zinc Pld	1
		268931	Ftg, Stand Pipe Hose .500 X 9.538 Lg Str Zinc	2
		084173	Clamp, Hose .460 - .545 Clp Dia Slfittng	2
		264196	Sender, Fuel Gauge Reed Switch 9in	1
		189910	Fitting, Stand Pipe Hose .3125 X 9.260 Lg 90deg Zinc	1
		181572	Bushing, Tank Fuel	2
		189908	Valve, Drain Fuel 180deg	1
24		196220	Bracket, Holddown Fuel Tank Rear	1
25		+Figure 1-8	Generator	1
26		258901	Bracket, Mtg DOC	1
27		135205	Nut, 625-11 .94hex .76h Stl Pld Elastic Stop Nut	5
28		259690	Plate W/Spacer, Support Engine	1
29		083476	Mount, Eng/Gen Nprn .875 Id X 2.500 Od X 2.000	5
30		071730	Tubing, Stl .875 Od X 12ga Wall X 2.500	5
31		071890	Retainer, Mount Eng/Gen	5
32		259687	Bracket, Mtg Engine Lh Hd	1
33		071731	Washer, Flat .656 Id X 2.250 Od X .187t Stl Pld	5
34		199849	Screw, 625-11 X 4.00hexhd Pln Gr 5 Pld	4
35		260103	Screw, 625-11x1.75 Flathd-Soc Stl	1
36		206606	Box, Valve Ball	1
37		265233	Adapter, Engine Deutz 2.9l	1
38		256692	Engine, Deutz Dsl Elec 8556 Td 2.9l 4	1
		*067265	Oil Filter	1
		199507	Hose, Oil Drain Assy 20 In (Consisting Of)	1
		165271	Valve, Oil Drain 3/8-18nptf	1
		176529	Fitting, Hose Brs Barbed Fem 1/2tbg X 3/8npt	1
		113854	Hose, Sae .500 Id X .780 Od Xc Oil (Order By Ft)	2ft

Eff w/Serial No. MH260921R And Following

Item No.	Dia. Mkgs.	Part No.	Description	Quantity
Figure 1-1. Main Assembly (Continued)				
		176528	Fitting, Hose Brs Barbed Elbow Fem 1/2 Tbg X 1/2 Npt	1
		173336	Fitting, Adapter Oil Drain	1
			Washer, Oil Drain (Available Through Engine Manufacturer)	1
		259883	Heater,Block Engine 120V 530W	1
39		254730	Bracket, Mtg Air Cleaner	1
40		259354	Hose, Air Pickup	1
41		255768	Air Cleaner, Intake (Engine)	1
		*192938	Filter, Air Element Primary	1
		◆192939	Filter, Air Element Safety	1
42		189763	Bracket, Mtg Air Cleaner	1
43		254977	Hose, Air Cleaner	1
44		260285	Hose, Rbr .875 Id (Water Pump To Expansion Tank)	1
45		255770	Bracket, Mtg Alternator To Compressor Bkt	2
46		253942	Pulley, Alternator	1
47		253963	Pulley, Idler 76mm Od 17mm Id 33mm W	1
48		253941	Pulley, Crankshaft	1
49		258014	Bracket, Mtg Tensioner	1
50		253958	Tensioner, Auto Belt	1
51		253940	Pulley, Water Pump	1
52		*253944	Belt, Micro-v 8 Rib (Air Pak Models)	1
		*265120	Belt, V 1/2 X 5/16 X 52 (Big Blue 800 Duo Pro)	1
53		207203	Fan, Engine Cooling 18.000 8 Blade Suction	1
54		Figure 1-11	Compressor Assembly	1
55		255666	Hose, Radiator Upper Deutz (2013 2.9 Liter)	1
56		255667	Hose, Radiator Lower Deutz (2013 2.9 Liter)	1
57		+259649	Shroud, Fan	1
58		272334	Label, Warning Moving Parts (En/Fr-Sym)	2
59		272498	Label, Notice Compressor Oil Fill (En/Fr-Sym)	1
60		259648	Radiator/Oil Cooler 3 Row Core 1.500 In/Outlet (US)	1
61		255549	Tank, Radiator Expansion	1
		261866	Sensor, Coolant Level Monitor	1
		243038	Washer, Seal Oil Cu .560 Id X .840 Od X .042 T	1
		173818	Ftg, Hose Brs Barbed Elbow M 1/4 Tbg X 1/4 Npt	1
62		254275	Upright, Rear Radiator	1
		260226	Extrusion, Rubber W/Adhesive .750 X .750 X 27.000	2
63		+201183	Cover, Battery Access	1
64		272341	Label, Warning Battery Explosion (En/Fr-Sym)	1
65		272334	Label, Warning Moving Parts (En/Fr-Sym)	1
66		255756	Guard, Fan Rh	1
67		209612	Lever, Switch Lockout Disconnect Switch	1
68		209611	Switch, Disc Battery 2p 6-36 Volts (Prior to MK300718R)	1
68		285589	Switch, Battery Disconnect 2p 6-36V (Eff w/MK300718R)	1
69		*255765	Filter, Fuel Secondary (D2013 2.9l)	1
70		+259335	Bracket, Mtg Fuel Filters/Pump	1
71		272555	Label, Notice Drain Water From Fuel Filter (En/Fr)	1
72		190992	Keeper, Latch Engine Access Door	1
73		209093	Bracket, Safety Latch	1
74		206604	Channel, Stiffener Engine Access	1
75		209092	Bracket, Mtg Safety Latch	1
76		209090	Bracket, Stiffener Panel	2
77		+259532	Panel, Engine Access Lift Off	1
78		260658	Label, Maintenance Air Compressor	1
79		278415	Label, Error Codes	1
80		278439	Label, Fuel/Hour/Engine Shutdown	2
81		209059	Schematic, Air System (Big Blue Air Pak)	1
82		260007	Label, Maintenance Deutz D2.9l4/Td2.9l4	1
83		209667	Latch, Paddle W/Lock	1
84		210681	Handle, Pocket Pull Door Access	1


Eff w/Serial No. MH260921R And Following

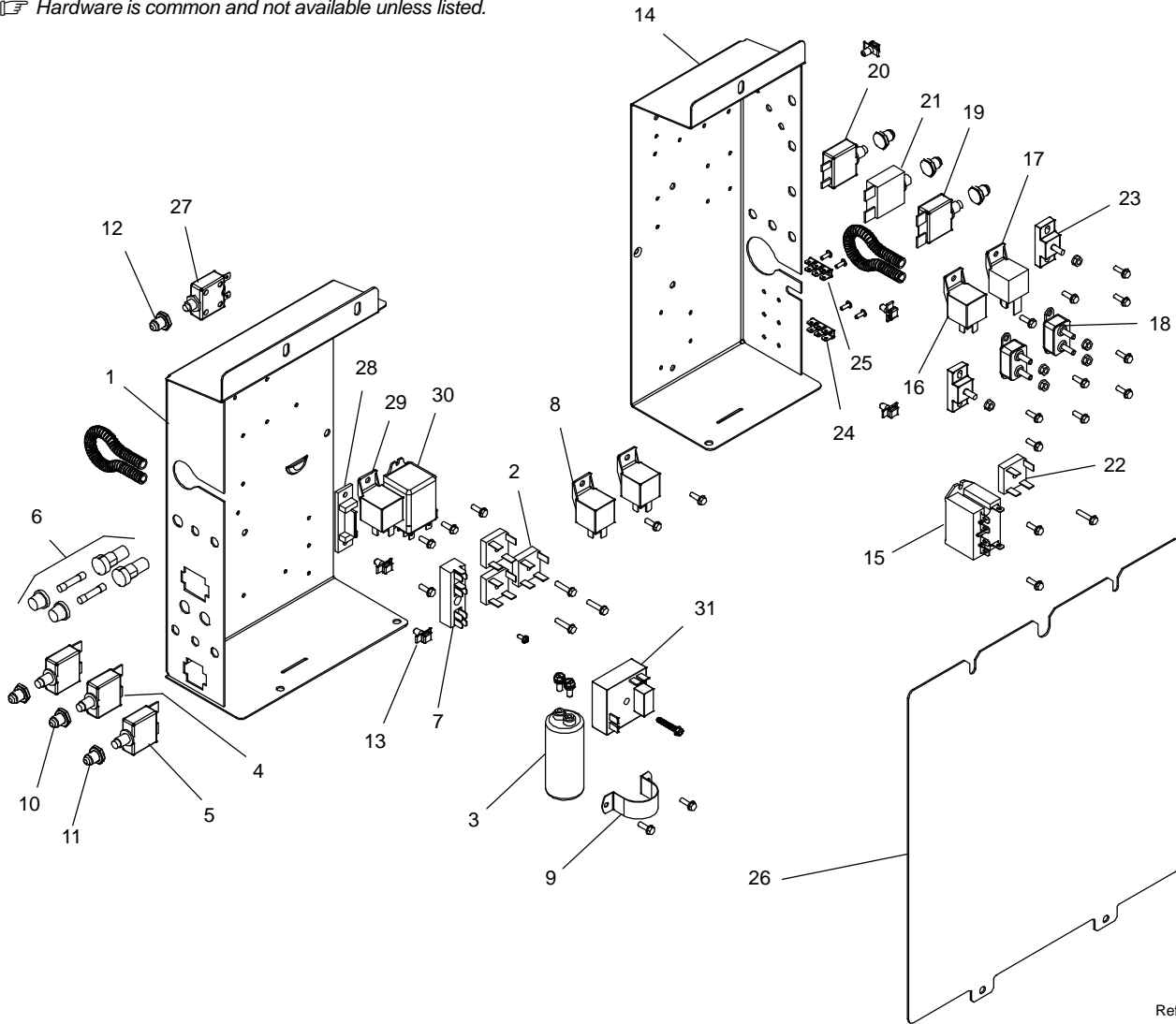
Item No.	Dia. Mkgs.	Part No.	Description	Quantity
Figure 1-1. Main Assembly (Continued)				
85		259402	Panel, Rocker Short	1
86		259406	Panel, Generator RH (800 Models)	1
86		275615	Panel, Generator RH (600 Models)	1
87		260961	Bracket, Mtg Switch	1
88		*255764	Filter, Fuel Pre (D2013 2.9l)	1
89		255767	Pump, Fuel (D2013 2.9l)	1
90		253934	Bracket Assy, Mtg Engine RH	1
91		259997	Stud, Stl M10-1.5 X 52mm Gr8.8	4
92		259855	Block, Mtg Rotor	4
93		256251	Mount, Vibration	2
94			Clamp, V Band (Order from engine manufacturer)	1
95		254724	Pipe, Exhaust Bellows Flex	1
96			DOC (Order from engine manufacturer)	1
97			Clamp, V Band (2 Sets) (Order from engine manufacturer)	2
98		261816	Reducer, Exhaust Flex 3 In Marmon To 1-7/8 St	1
99		010875	Clamp, Muffler 2.000 Dia U Pld	1
100		105734	Pipe, Muffler Extension Elbow 1.750 OD	1
101		190206	Cable, Bat Neg 42.000 No 1 Awg W/Clamp & .400 Rng	1
102		264019	Cable, Bat Pos 24" No 1 Awg/8ga Aux W/Clamp & .400	1
103		266385	Bracket, Battery Holddown	1
104		201006	Bolt, J Stl .312-18 X 8.500 Pld	2
		208041	Spacer, Stl .323 Id X .625 Od X .141 Thk	2
105			Battery, Stor 12V 925 Crk 195 Rsv Gp 31 Maint Free	1
106		264924	Bracket, Battery Locator	1
107		191897	Bracket, Mtg Unit	4
108		+269943	Base	1
109		272342	Label, Warning Do Not Weld On Base (En/Fr-Sym)	2
110			Label, Rating Card (Order By Model & Serial No.)	1
111		272343	Label, Warning General Precautionary (En/Fr-Sym)	2
112	R3, R8	189699	Resistor, Ww Tap 375 W 10 Ohm W/Mtg Bkt	2
113		Figure 1-2	Control Box Assembly	1
114	Z1, Z21	249772	Stabilizer	2
115		248940	Bracket, Mtg Stabilizer	2
	CT1	105370	Xfmr, Current	1
116		256487	Pan, Vault & Capacitors	1
117		206352	Brace, Front To Center Upright	2
118		191448	Cover, Top Front Upright	1
119		207096	Cover, Box Front Upright	1
120		254117	Upright, Front	1
121		259266	Tab, Lockout	1
122		265250	Mount, Access RH	1
123		259268	Door, Access RH w/Om Pocket	1
124		259265	Door, Access LH	1
125		189975	Hinge, Door Access 180 Deg	4
126		265249	Mount, Access LH	1
		282178	Label, Warning Breathing Diesel Engine Exhaust	1
		*276418	USB Flash Drive	1
		*262459	Kit, Filters Deutz (2.9l4) Engine	1
		283580	Kit, Label (600 Models)	1
		283582	Kit, Label (800 Duo Pro Models)	1
		283584	Kit, Label (800 Duo Air Pak Models)	1
		281312	Kit, Service Fuel Fitting Install	1
		290339	Kit, Service Control Board (800 Models)	1
♦OPTIONAL		*Recommended Spare Parts.		

+ When ordering a component originally displaying a precautionary label, the label should also be ordered.

To maintain the factory original performance of your equipment, use only Manufacturer's Suggested Replacement Parts. Model and serial number required when ordering parts from your local distributor.

Eff w/Serial No. MH260921R And Following

 Hardware is common and not available unless listed.



Ref. 907752

Figure 1-2. Control Box Assembly


Eff w/Serial No. MH260921R And Following

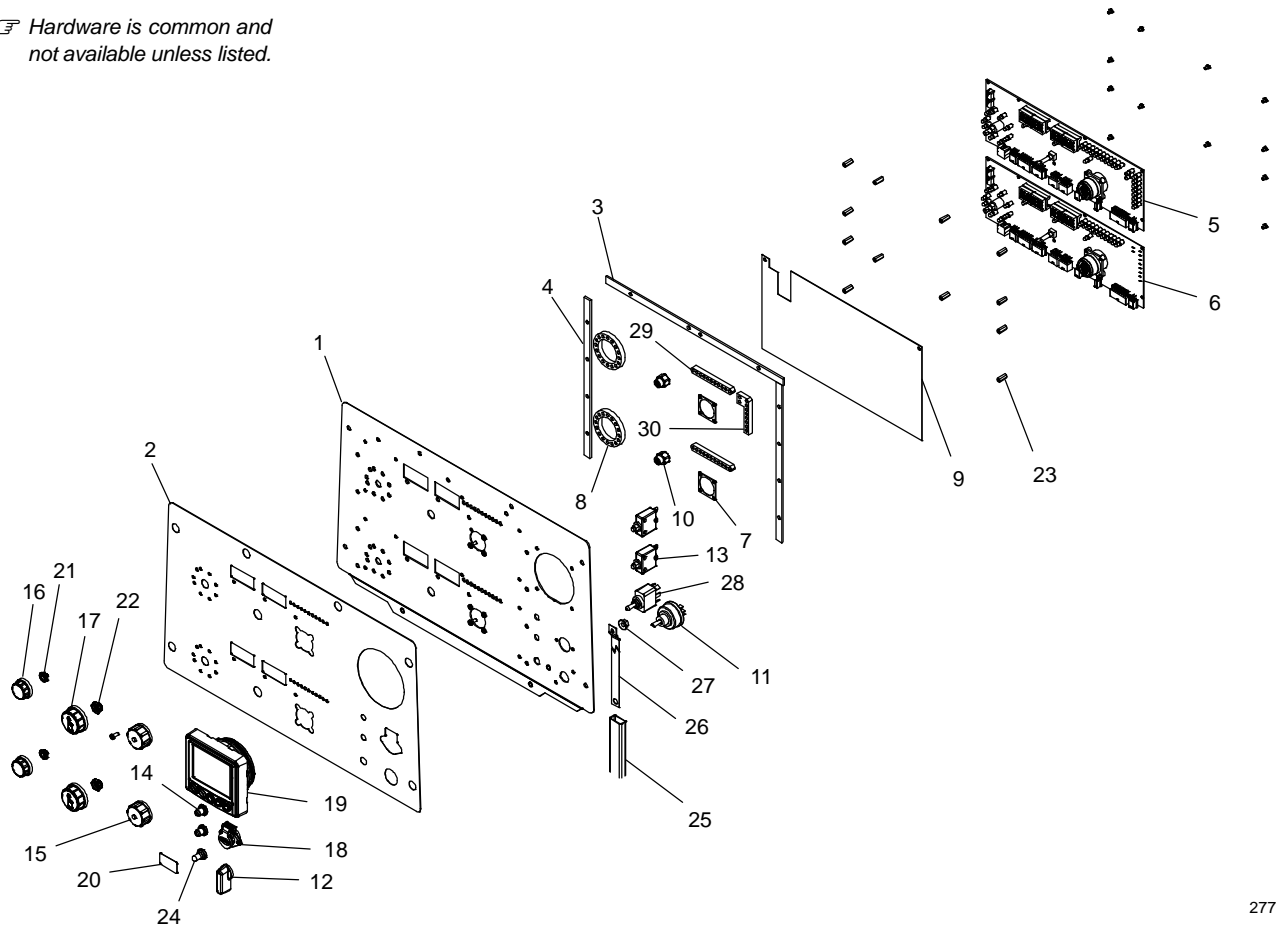
Item No.	Dia. Mkgs.	Part No.	Description	Quantity
Figure 1-2. Control Box Assembly (Figure 1-1 Item 113)				
...	1	258577	Control Box, Lh	1
...	2	SR1-SR2,SR4 035704	Rectifier, Integ Bridge 40. Amp 800V (800 Models)	3
...	2	SR1-SR3 035704	Rectifier, Integ Bridge 40. Amp 800V (600 Models)	3
...	3	C6 087110	Capacitor, Elctlt 240 uF 200 VDC Can 1.39 Di	1
...	4	CB3-CB4 139266	Supplementary Protector, Man Reset 1p 15A 250VAC	2
...	5	CB14 139266	Supplementary Protector, Man Reset 1p 15A 250VAC (Air Dryer Only)	1
...	6	F1-F2 046432	Holder, Fuse Mintr .250 X 1.250 Panel Mtg	2
...		*085874	Fuse, Mintr Cer Slo-blo 10. Amp 250 Volt	2
...	7	TE2 190210	Block, Term 5-3-3	1
...	8	CR4,CR24 173069	Relay, Encl 12VDC Spdt 50A/30A 5pin Flange Mtg	2
...		CR7 173069	Relay, Encl 12VDC Spdt 50A/30A 5pin Flange Mtg (Eff w/NA230715R)	1
...	9	177136	Clamp, Capacitor 1.375 Dia	1
...	10	190323	Boot, Circuit Breaker Clear Hex Nut	5
...	11	190323	Boot, Circuit Breaker Clear Hex Nut (Air Dryer Only)	1
...	12	190323	Boot, Circuit Breaker Clear Hex Nut (Air Pak Only)	1
...	13	204737	Cable Tie Mount, Winged Push	5
...	14	258576	Control Box, Rh	1
...	15	CR5 223710	Relay, Encl 12VDC Dpst-No 25A 6pin Flange	1
...	16	CR3 258445	Relay, Encl 12VDC Spdt 50A/14VDC W/Diode 5pin	1
...	17	CR8 258446	Relay, Encl 12VDC Spst 70A/14VDC W/Diode 4pin	1
...	18	CB10,CB13 190374	Circuit Breaker, Auto Reset 12VDC 40 Amp	2
...	19	CB2 139266	Supplementary Protector, Man Reset 1p 15A 250VAC	1
...	20	CB11 093997	Supplementary Protector, Man Reset 1p 30A 250VAC	1
...	21	CB12 093996	Supplementary Pro, Man Reset 1p 20A 250VAC Frict	1
...	22	SR5 035704	Rectifier, Integ Bridge 40. Amp 800V	1
...	23	TE3-TE4 072253	Stud, Connection Single 10-32 X .500 X 1.250 Mtg	2
...	24	129524	Term, Frict 250x032 Uninsul Male .130 Stud Mtg 3pr	1
...	25	129524	Term, Frict 250x032 Uninsul Male .130 Stud Mtg 3pr (Air Pak Only)	1
...	26	258582	Cover, Control Box	1
...	27	083432	Supplementary Pro, Man Reset 1p 10A 250 VAC Frict (Air Pak Only)	1
...	28	189701	Diode/Capacitor Board (Air Pak Only)	1
...	29	◆090104	Relay, Encl 12VDC Spst 30A/15VDC 5pin Flange Mtg (Air Pak Only)	1
...	30	113247	Relay, Encl 12VDC Dpdt 20A/120VAC 8pin Flange Mtg (Air Pak Only)	1
...	31	◆268474	Relay, Delay Fix 12VDC Spst (N.O.) 10A 30Sec (Air Dryer Only)	1

◆OPTIONAL

To maintain the factory original performance of your equipment, use only Manufacturer's Suggested Replacement Parts. Model and serial number required when ordering parts from your local distributor.

Eff w/Serial No. MH260921R And Following

 Hardware is common and not available unless listed.



277068

Figure 1-3. Panel, Front Engine & Weld Controls, 800 Models

Item No.	Dia. Mkgs.	Part No.	Description	Quantity
----------	------------	----------	-------------	----------

Figure 1-3. Panel, Front Engine & Weld Controls, 800 Models (Figure 1-1, Item 3)

...	1	275689	Panel, Engine/Weld Control	1
...	2		Label, Nameplate (Order by Model and Serial No.)	1
...	3	277517	Gasket, Control Board Cover Top	1
...	4	276583	Seal, Control Board Cover	2
...	5	PC1 290339	Kit, Service Control Board	1
...	6	PC21 290821	Kit, Service Control Board (B Side Replacement)	1
...	7	277524	Gasket, 14 Pin Receptacle	2
...	8	278559	Foam, LED Process Select	2
...	9	279297	Baffle, Lead Protection	1
...	10	278485	Assy, Encoder Nut W/O-Ring	2
...	11	217680	Switch, Ignition 4 Position W/Out Handle	1
...		201244	Washer, Tooth.728idx1.1660dx.050t Stl Pld Int.688	1
...	12	207073	Lever, Ignition Switch	1
...	13	CB9,CB29 083432	Supplementary Pro, Man Reset 1p 10A 250VAC Frict	2
...	14	190323	Boot, Circuit Breaker Clear Hex Nut	2
...	15	170391	Conn, Circ Ms Protective Cap Size 20 Nylon	2
...	16	245663	Knob, Encoder 1.250 Dia X .250 Id Push On W/Spring	2
...	17	276230	Knob, Encod 1.67 D. X 6mm Id Push On W/Spring/Print	2
...	18	276484	Harness, Front Panel USB	1
...	19	256689	Display, LCD Alphanumeric Engine	1
...		242579	Screw, K40x 10 Pan Hd-Phl Stl Pld Pt Thread Forming	8
...	20	270453	Label, Warning Read Owner's Manual Wordless	1
...		215000	Screw, 006-32x .18 Hex Hd-Slt Stl Pld	12
...	21	231468	Nut, 375-32 .56hex .22h Brs Conical Knurl	2
...	22	231469	Nut, 500-28 .69hex .28h Brs Conical Knurl	2

Eff w/Serial No. MH260921R And Following

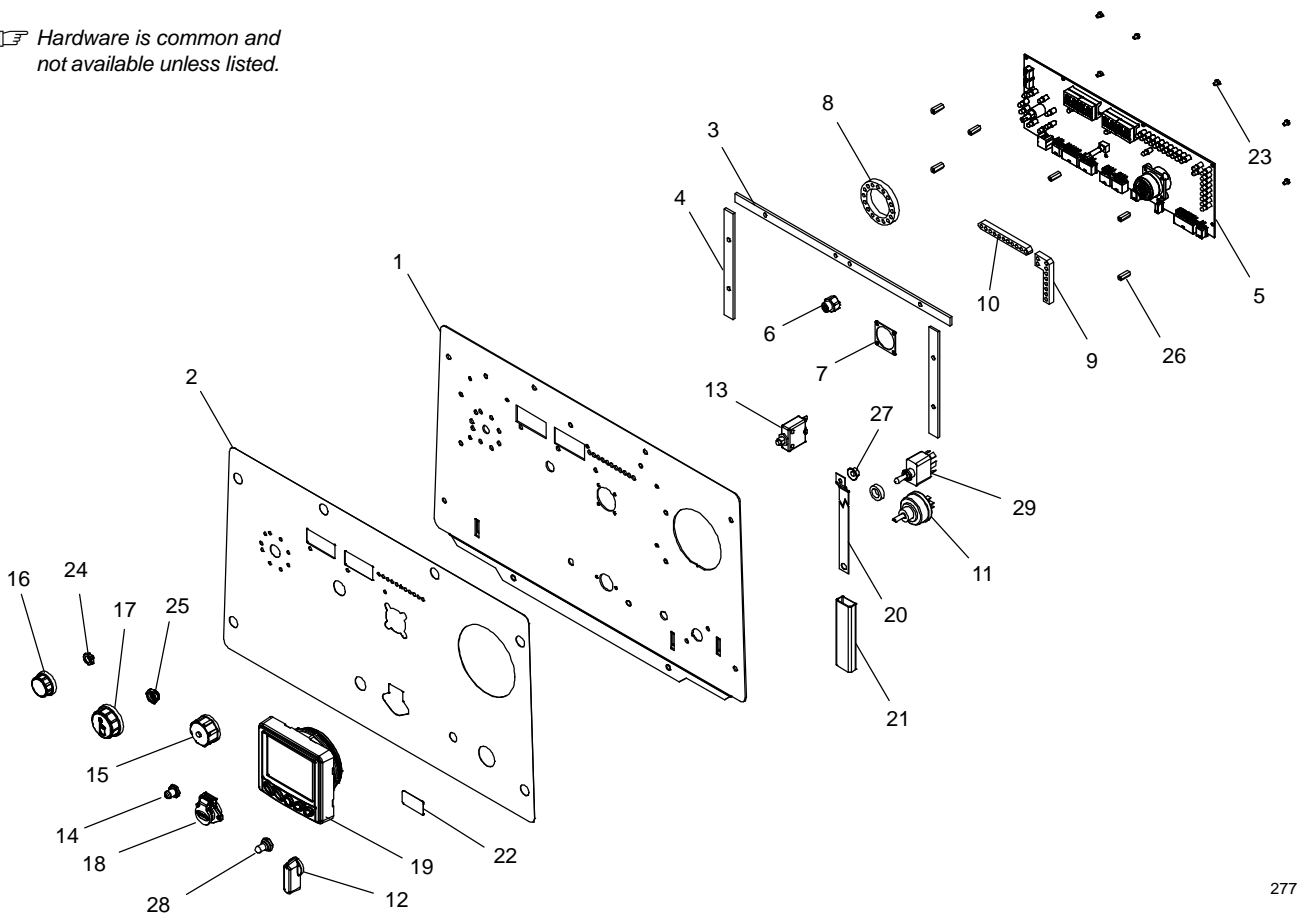
Item No.	Dia. Mkgs.	Part No.	Description	Quantity
----------	------------	----------	-------------	----------

Figure 1-3. Panel, Front Engine & Weld Controls, 800 Models (Continued)

... 23	190512 ..	Stand-Off, No 6-32 X .640 Lg .250 Hex Al Fem	12
... 24	021385 ..	Boot, Toggle Switch Lever (Air Pak Only)	1
... 25	086288 ..	Tubing, GI Acryl .750- .786 Id Spool Yel Fa175
... 26	279479 ..	Strap, Grounding 15.12 In Long	1
... 27	152461 ..	Nut, 250-20 .44hex .23h Stl Pld Sem Cone Wshr.65d	1
... 28	206624 ..	Switch, Tgl Sptt 6A 125VAC (On)-On-(On) Spd Term (Air Pak Only) ...	1
... 29	278563 ..	Foam, LED Dig	2
... 30	278564 ..	Foam, LED Fuel And Service	1
.....	280214 ..	Spring, Wave (Stainless Steel)	2

To maintain the factory original performance of your equipment, use only Manufacturer's Suggested Replacement Parts. Model and serial number required when ordering parts from your local distributor.

Hardware is common and not available unless listed.



277063

Figure 1-4. Panel, Front Engine & Weld Controls, Big Blue 600 Air Pak

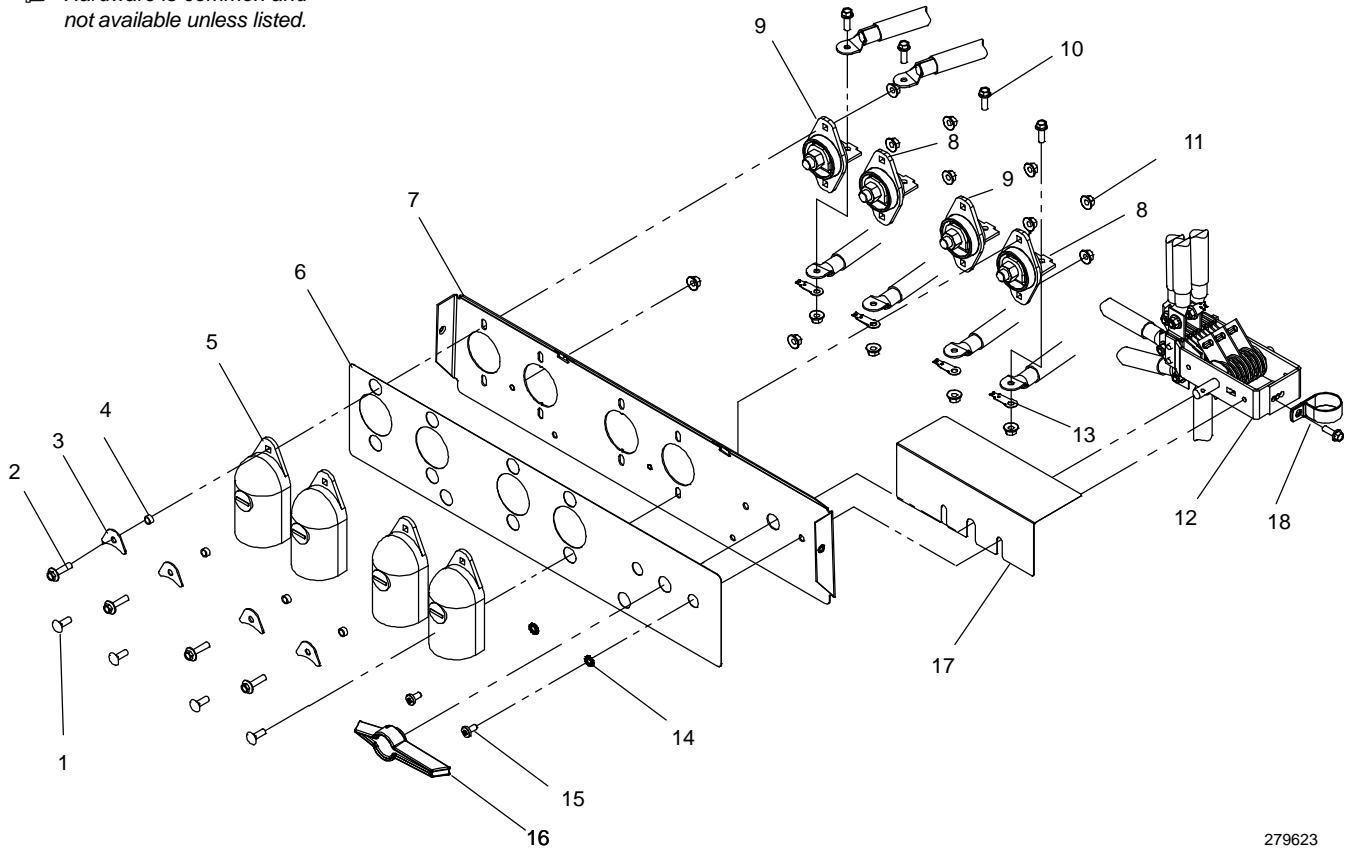
Eff w/Serial No. MH260921R And Following

Item No.	Dia. Mkgs.	Part No.	Description	Quantity
Figure 1-4. Panel, Front Engine & Weld Controls, Big Blue 600 Air Pak (Figure 1-1, Item 3)				
...	1	276672	Panel, Engine/Weld Control	1
...	2		Label, Nameplate (Order by Model and Serial No.)	1
...	3	277517	Gasket, Control Board Cover Top	1
...	4	277518	Gasket, Control Board Cover	2
...	5	290339	Kit, Service Control Board	1
...	6	278485	Assy, Encoder Nut W/O-Ring	1
...	7	277524	Gasket, 14 Pin Receptacle	1
...	8	278559	Foam, LED Process Select	1
...	9	278564	Foam, LED Fuel And Service	1
...	10	278563	Foam, LED Dig	1
...	11	217680	Switch, Ignition 4 Position W/Out Handle	1
...		201244	Washer, Tooth.728idx1.166odx.050t Stl Pld Int.688	1
...	12	207073	Lever, Ignition Switch	1
...	13	083432	Supplementary Pro, Man Reset 1p 10A 250VAC Frict	1
...	14	190323	Boot, Circuit Breaker Clear Hex Nut	1
...	15	170391	Conn, Circ Ms Protective Cap Size 20 Nylon	1
...	16	245663	Knob, Encoder 1.250 Dia X .250 Id Push On W/Spring	1
...	17	276230	Knob, Encod 1.67 D. X 6mm Id Push On W/Spring/Print	1
...		280214	Spring, Wave (Stainless Steel)	1
...	18	276484	Harness, Front Panel USB	1
...	19	256689	Display, LCD Alphanumeric Engine (Deutz)	1
...	20	279479	Strap, Grounding 15.12 In Long	1
...	21	086288	Tubing, GI Acryl .750- .786 Id Spool Yel Fa1	.75
...	22	270453	Label, Warning Read Owner's Manual Wordless	1
...	23	215000	Screw, 006-32x .18 Hex Hd-Slt Stl Pld	6
...	24	231468	Nut, 375-32 .56hex .22h Brs Conical Knurl	1
...	25	231469	Nut, 500-28 .69hex .28h Brs Conical Knurl	1
...	26	190512	Stand-Off, No 6-32 X .640 Lg .250 Hex Al Fem	6
...	27	152461	Nut, 250-20 .44hex .23h Stl Pld Sem Cone Wshr.65d	1
...	28	021385	Boot, Toggle Switch Lever	1
...	29	206624	Switch, Tgl Sptt 6A 125VAC (On)-On-(On) Spd Term	1
...		280214	Spring, Wave (Stainless Steel)	1

To maintain the factory original performance of your equipment, use only Manufacturer's Suggested Replacement Parts. Model and serial number required when ordering parts from your local distributor.

Eff w/Serial No. MH260921R And Following

Hardware is common and not available unless listed.



279623

Figure 1-5. Panel, Weld Output, 800 Models


Item No.	Dia. Mkgs.	Part No.	Description	Quantity
----------	------------	----------	-------------	----------

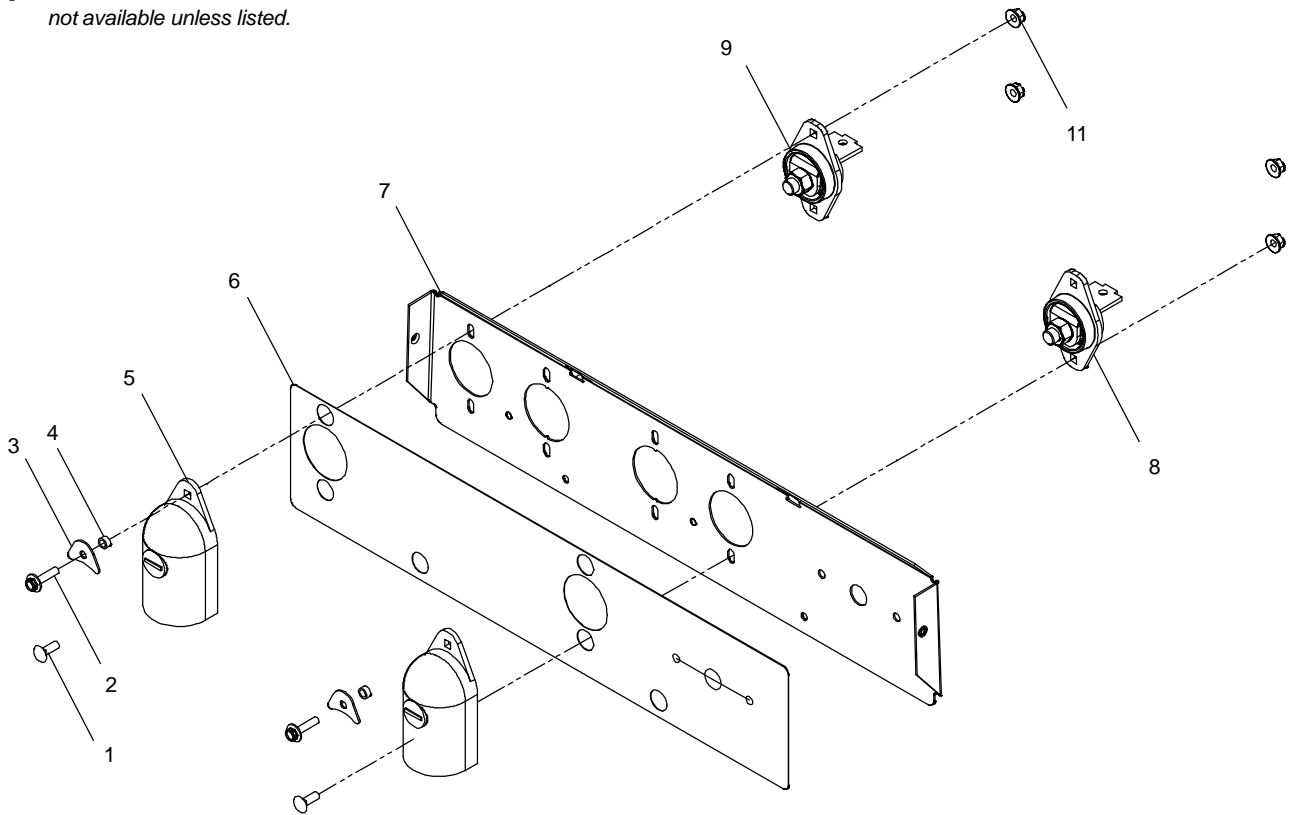
Figure 1-5. Panel, Weld Output (Figure 1-1, Item 1)

...	1	005107	Bolt, Crg Stl .250-20 X .750 Gr5 Pld	4
...	2	108941	Screw, 250-20x1.00 Hexwhd.61d Gr5 Pld	4
...	3	180735	Washer, Output Stud	4
...	4	181169	Spacer, Output Stud	4
...	5	186621	Boot, Generic Output Stud	4
...	6	258836	Label, Output Panel W/Parallel Airpak	1
...	7	258685	Panel, Mtg Terminal Power Output	1
...	8	241433	Terminal, Pwr Output Black	2
...	9	241432	Terminal, Pwr Output Red	2
...	10	108940	Screw, 250-20x .75 Hexwhd.61d Gr5 Pld	4
...	11	152461	Nut, 250-20 .44hex .23h Stl Pld Sem Cone Wshr.65d	14
...	12	S3	259356 Switch, Paralleling W/Leads	1
...	13	010381	Connector, Rectifier	4
...	14	602208	Washer, Tooth.256idx0.510odx.028t Stl Pld Ext.250 A	2
...	15	189445	Screw, 250-20x .50 Pan Hd-Phl Stl Pld	2
...	16	230339	Switch Handle W/Pin	1
...	17	269892	Guard, Polarity Switch	1
...	18	127854	Clamp, Stl Cush 1.312 Dia X .343 Mtg Hole	1

To maintain the factory original performance of your equipment, use only Manufacturer's Suggested Replacement Parts. Model and serial number required when ordering parts from your local distributor.

Eff w/Serial No. MH260921R And Following

 Hardware is common and not available unless listed.



Ref. 279324

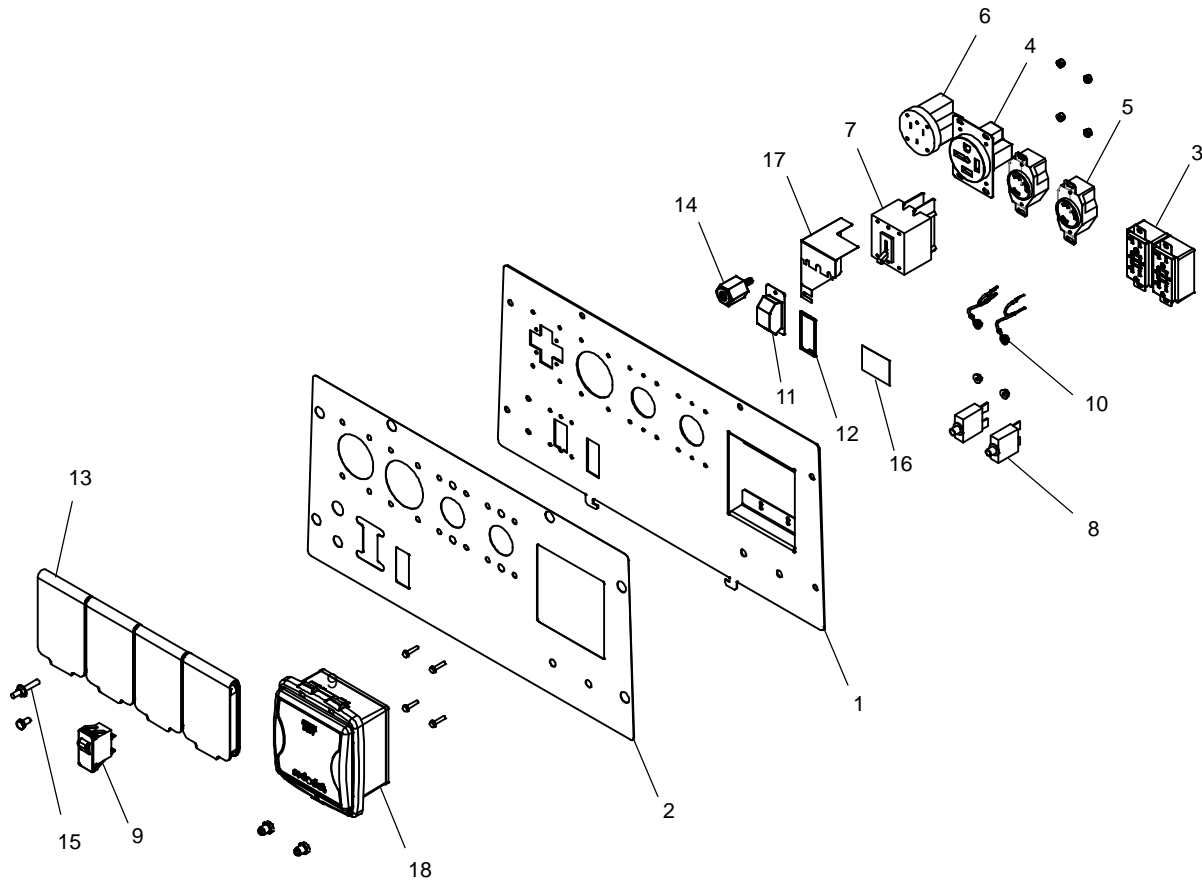
Figure 1-6. Panel, Weld Output, 600 Models

Item No.	Dia. Mkgs.	Part No.	Description	Quantity
----------	------------	----------	-------------	----------

Figure 1-6. Panel, Weld Output, 600 Models (Figure 1-1, Item 1)

...	1	005107	.. Bolt, Crg Stl .250-20 X .750 Gr5 Pld	2
...	2	108941	.. Screw, 250-20x1.00 Hexwhd.61d Gr5 Pld	2
...	3	180735	.. Washer, Output Stud	2
...	4	181169	.. Spacer, Output Stud	2
...	5	186621	.. Boot, Generic Output Stud	2
...	6	259993	.. Label, Output Panel W/Polarity	1
...	7	258685	.. Panel, Mtg Terminal Power Output	1
...	8	241433	.. Terminal, Pwr Output Black	1
...	9	241432	.. Terminal, Pwr Output Red	1
...		108941	.. Screw, 250-20x1.00 Hexwhd.61d Gr5 Pld	2
...	10	152461	.. Nut, 250-20 .44hex .23h Stl Pld Sem Cone Wshr.65d	6
...		010381	.. Connector, Rectifier	1
...		143397	.. Blank, Snap-In Nyl .312 Mtg Hole Black	1

To maintain the factory original performance of your equipment, use only Manufacturer's Suggested Replacement Parts. Model and serial number required when ordering parts from your local distributor.



271860-E

Figure 1-7. Panel, Auxiliary Power North America

Item No.	Dia. Mkgs.	Part No.	Description	Quantity
----------	------------	----------	-------------	----------

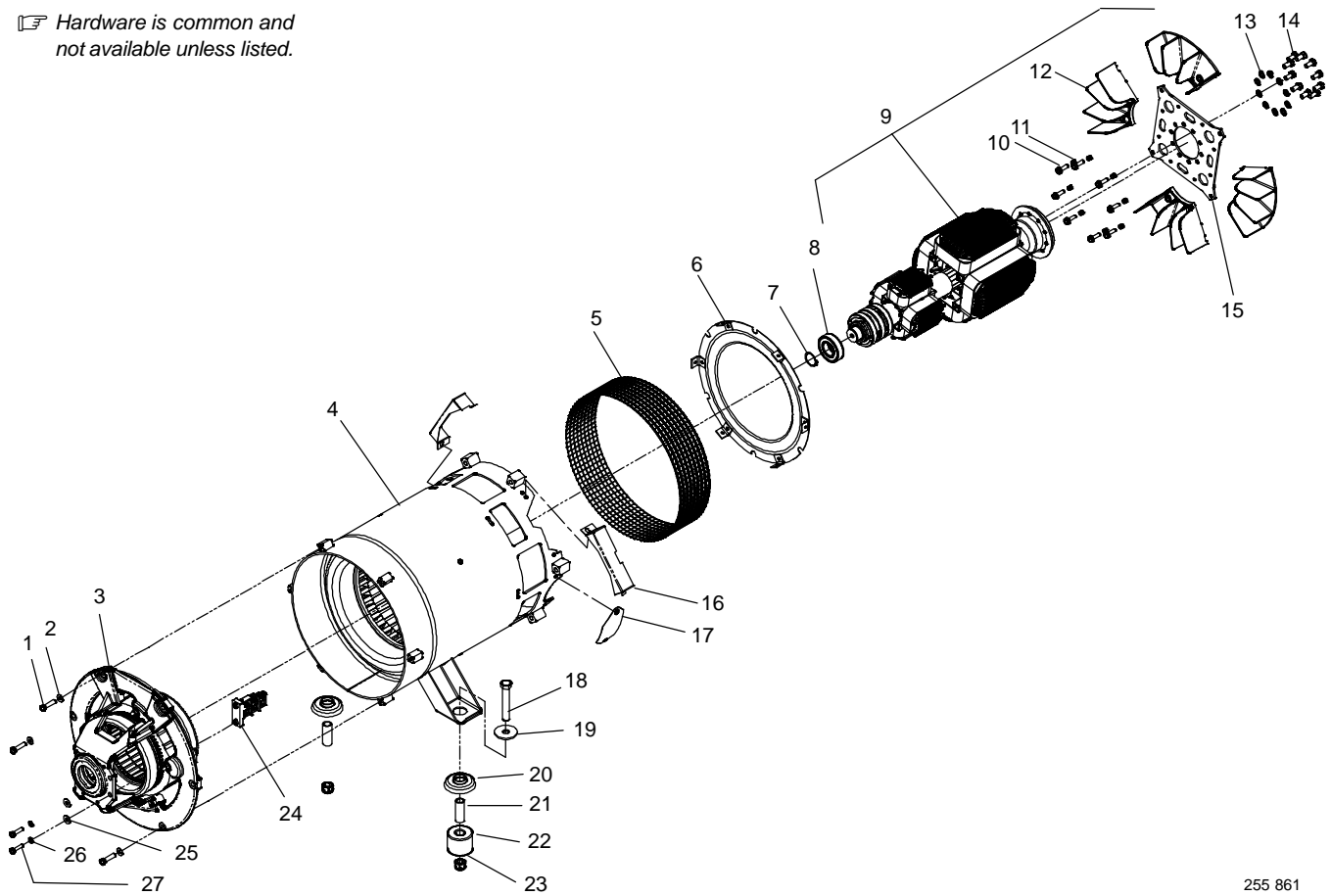
Figure 1-7. Panel, Auxiliary Power North America (Figure 1-1, Item 2)

...	1	271859	Panel, Aux Power	1
...	2	271858	Label, Aux Power W/In Use Cover (Bw)	1
...	3	GFCI1-GFCI2 280236	Receptacle, GFCI 15/20A	2
...	4	RC4 254094	Rcpt, Str 3p4w 50A 250V Flush Mtg	1
...	5	RC1-RC2 147632	Rcpt, Tw Lk Grd 2p3w 30A 250V *L6-30r	2
...	6	RC5 182954	Rcpt, Str 3p4w 50A 125/250V Flush Mtg *14-50	1
...	7	CB1 214926	Supplementary Protector, Man Reset 3p 50A 250VAC	1
...	8	CB7-CB8 093996	Supplementary Pro, Man Reset 1p 20A 250VAC Frict	2
...	9	CB6 201083	Supplementary Protector, Man Reset 2p 20A 250VAC	1
...	10	C1-C2 217054	Capacitor, Cer Disc .0047 uF 3000 VDC W/Terms	2
...	11	214927	Boot, Circuit Breaker 1 Pole	1
...	12	201553	Clip, Retaining Circuit Breaker	1
...	13	209056	Cover, Receptacle W/Gasket	4
...	14	207560	Insulator, Stand-Off With Stud	1
...	15	197203	Grounding Stud Assy, Brass	1
...	16	272330	Label, Warning Electric Shock/Moving Parts (Sym)	1
...	17	263778	Guard, Supplementary Protector	1
...	18	263905	Cover, Receptacle Weatherproof Duplex Dual	1

To maintain the factory original performance of your equipment, use only Manufacturer's Suggested Replacement Parts. Model and serial number required when ordering parts from your local distributor.

Eff w/Serial No. MH260921R And Following

☞ Hardware is common and not available unless listed.



255 861

Figure 1-8. Generator

Item No.	Dia. Mkgs.	Part No.	Description	Quantity
----------	------------	----------	-------------	----------

Figure 1-8. Generator (Figure 1-1, Item 25)

...	1	132053	.. Screw, 375-16x1.50 Hex Hd-Pln Gr5 Pld Blk	6
...	2	183387	.. Washer, Cone .380idx .860odx.109t Stl Pld 4000lbs	6
...	3	278733	.. Endbell W/Exciter Stator	1
...		257974	.. Kit, Endbell w/O-ring (Includes)	
...		203635	.. Endbell, Gen	1
...		143220	.. O-Ring, 2.859 Id X .139 Cs 70 Duro Viton	1
...		278735	.. Stator, Exciter/Aux Power	1
...		604538	.. Washer, Flat .344idx0.688odx.065t Stl Pld Ansi.312	4
...		172684	.. Nut, 312-18 .50hex .27h Stl Pld Sem Cone Wshr.76d	4
...		604537	.. Nut, 312-18 .50hex .28h Stl Pld	4
...		604538	.. Washer, Flat .344idx0.688odx.065t Stl Pld Ansi.312	4
...		261463	.. Screw, 312-18x4.50 Hex Hd-pln Stl Gr5 Pld Full	4
...	4	+260669	.. Stator, Weld/Power Assy Complete	1
...	5	190197	.. Guard, Generator Wire Mesh	1
...		172674	.. Spring, Ext .240 Od X .041 Wire X 3.500 Pld	2
...	6	039207	.. Baffle, Air Gen	1
...		172555	.. Screw, M10-1.5x 50 Hex Hd-Pln 8.8 Pld	6
...	7	024617	.. Ring, Rtnng Ext 1.375 Shaft X .050 Thk	1
...	8	053390	.. Bearing, Ball Rdl Sgl Row 1.370 X 2.830 X .6	1
...	9	251855	.. Rotor, Generator	1
...	10	080389	.. Screw, 312-18x1.00 Hexwhd.66d Stl Pld Slffmg Tap-Rw	8
...	11	083883	.. Washer, Lock .402idx0.709odx.087t Stl Pln Split10mm	8
...	12	206242	.. Fan, Rotor Segmented Assy Gen	4
...	13	083883	.. Washer, Lock .402idx0.709odx.087t Stl Pln Split10mm	10

Eff w/Serial No. MH260921R And Following

Item No.	Dia. Mkgs.	Part No.	Description	Quantity
Figure 1-8. Generator (Continued)				
... 14		049026	Screw, M10-1.5x 25 Hex Hd-Pln 8.8 Pln	10
... 15		210332	Plate, Flex Hubmount	1
... 16		191577	Guard, Starter Deutz	2
... 17		191579	Cover, Starter Hole	1
		199849	Screw, 625-11x4.00 Hex Hd-pln Gr5 Pld	3
... 18		071731	Washer, Flat .656idx2.250odx.187t Stl Pld	2
... 19		071890	Retainer, Mount Eng/Gen	2
... 20		071730	Tubing, Stl .875 Od X12ga Wall X 2.500	2
... 21		083476	Mount, Eng/Gen Nprn .875id X 2.500od X 2.000 60 Dur	2
... 22		135205	Nut, 625-11 .94hex .77h Stl Pld Elastic Stop Nut	2
... 23		602159	Screw, 312-18x .75 Hexwhd.66d Stl Pld Slffmg Tap-Rw	6
... 24		189142	Brushholder, Generator	1
		*190823	Brush, Contact Elect .250 X.500 X 1.250 Grd Ay	3
		208469	Clip, Spring	3
... 25		602242	Washer, Flat .375idx0.875odx.083t Stl Pld Blk	2
... 26		602211	Washer, Lock .318idx0.586odx.078t Stl Pld Split.312	2
... 27		604534	Screw, 312-18x1.25 Hex Hd-Pln Gr5 Pld	2

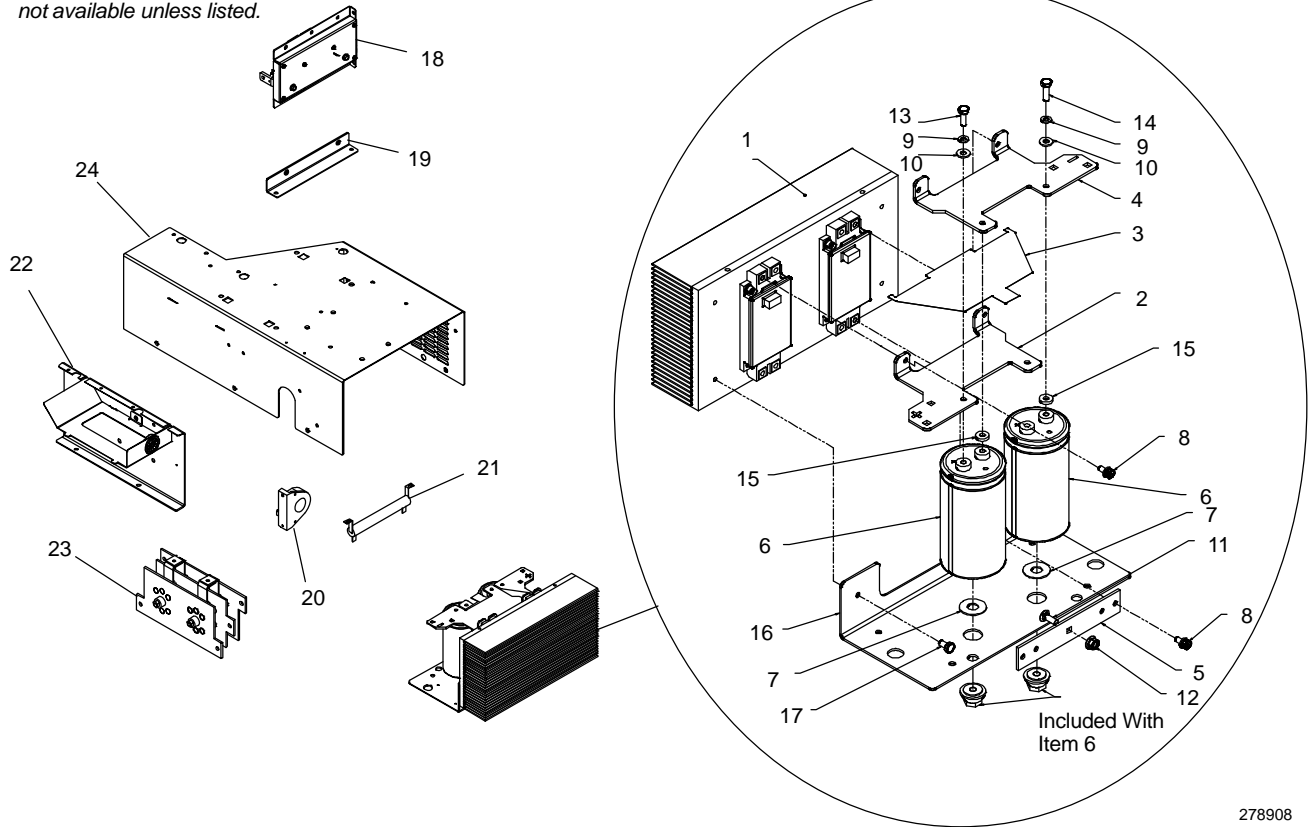
+ When ordering a component originally displaying a precautionary label, the label should also be ordered.

*Recommended Spare Parts.

To maintain the factory original performance of your equipment, use only Manufacturer's Suggested Replacement Parts. Model and serial number required when ordering parts from your local distributor.

Eff w/Serial No. MH260921R And Following

☞ Hardware is common and not available unless listed.



278908

Figure 1-9. Weld Output Module, 600 Models

Item No.	Dia. Mkgs.	Part No.	Description	Quantity
----------	------------	----------	-------------	----------

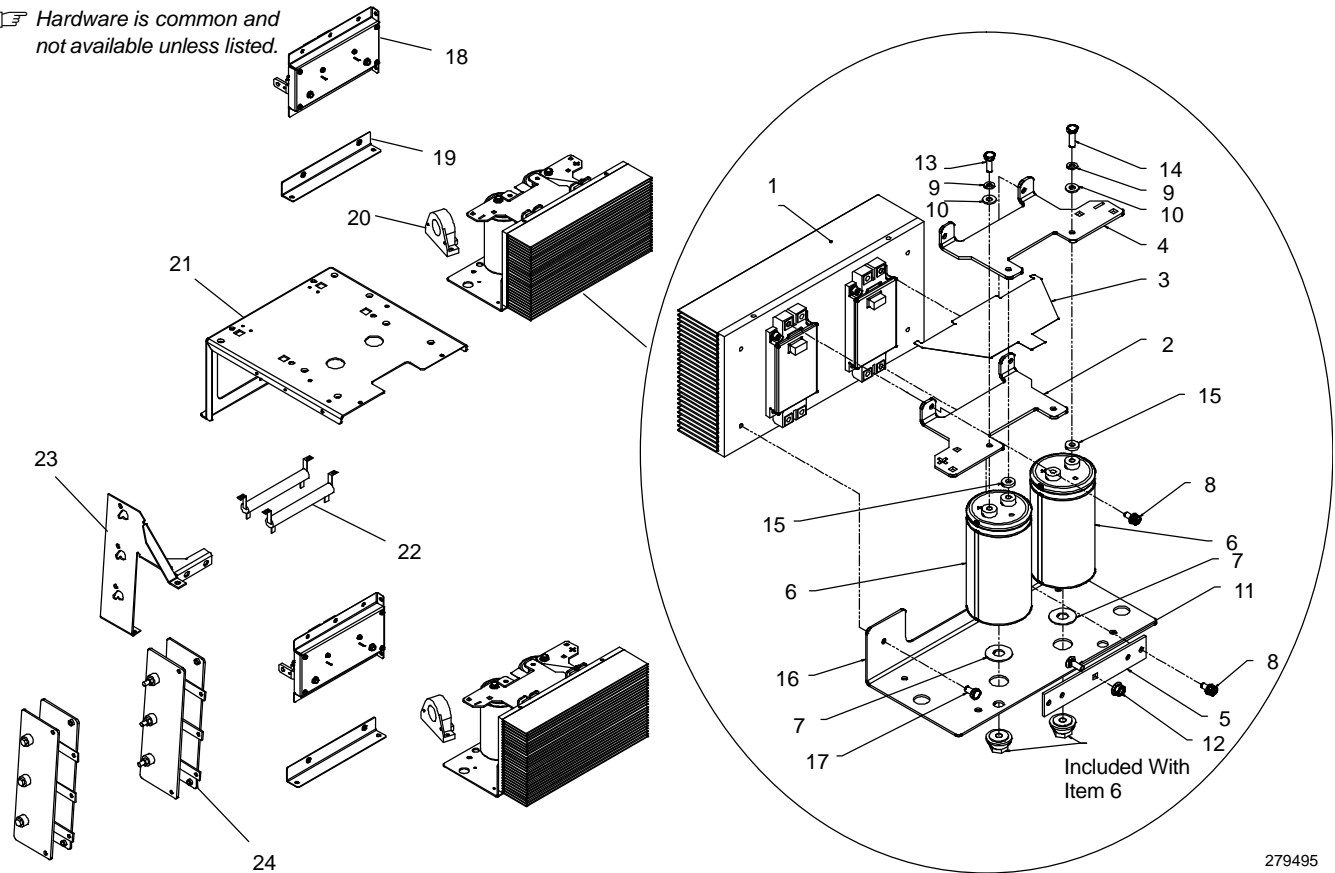
Figure 1-9. Weld Output Module, 600 Models (Figure 1-1, Item 7)

.....		278886	Module, IGBT Weld Output (Includes)	1
... 1		278884	Heat Sink Assy, IGBT	1
... 2		250350	Bus Bar, Positive	1
... 3		250323	Insulator, Bus Bar	1
... 4		250348	Bus Bar, Negative	1
... 5		245378	Bus Bar, Ac	1
... 6	C3	246841	Capacitor, Elctlt 35000 uF 100 VDC Can 3.00 Dia	2
... 7		239547	Washer, Flat Nylon .516 Id X 1.250 Od X .062 Thk	2
... 8		202853	Screw, M 6-1.0x 14 Hex Hd-Phl Stl Pld Sems	8
... 9		602207	Washer, Lock .255idx0.489odx.062t Stl Pld Split.250	4
... 10		227186	Washer, Flat .254idx0.468odx.090t Stl Zc Cl	4
... 11		217283	Bolt, Crg Stl .250-20 X .750 Gr5 Pld	1
... 12		152461	Nut, 250-20 .44hex .23h Stl Pld Sem Cone Wshr.65d	1
... 13		223039	Screw, 250-28x .75 Hex Hd-Pln Stl Gr5 Pld Zinc Blk	2
... 14		223040	Screw, 250-28x .87 Hex Hd-Pln Stl Gr5 Pld Zinc Clr	2
... 15		247093	Stand-Off, Conductive Bus	2
... 16		250346	Bracket, Mtg Capacitors	1
... 17		602154	Screw, 250-20x .50 Hexwhd.50d Stl Pld Slffmg Tap-Rw	2
... 18		269559	Circuit Card Assy, Wcc Filter Network Potted	1
... 19		279485	Bracket, Mtg Wcc Filter Network Potted Assy	1
... 20	HD1	168829	Transducer, Current 1000A Module Max Open Loop	1
... 21	R10	188067	Resistor, Ww Fxd 100 W 200 Ohm W/Clips	1
... 22		259039	Bracket, Rectifier	1
... 23	SR6	255758	Rectifier, Si 3ph 400 Amp 600 Piv	1
... 24		258908	Windtunnel, Rect/Cap	1

To maintain the factory original performance of your equipment, use only Manufacturer's Suggested Replacement Parts. Model and serial number required when ordering parts from your local distributor.

Eff w/Serial No. MH260921R And Following

Hardware is common and not available unless listed.



279495

Figure 1-10. Weld Output Module, 800 Models

Item No.	Dia. Mkgs.	Part No.	Description	Quantity
----------	------------	----------	-------------	----------

Figure 1-9. Weld Output Module, 800 Models (Figure 1-1, Item 7)

.....		278886	Module, IGBT Weld Output (Includes)	2
... 1		278884	Heat Sink Assy, IGBT	1
... 2		250350	Bus Bar, Positive	1
... 3		250323	Insulator, Bus Bar	1
... 4		250348	Bus Bar, Negative	1
... 5		245378	Bus Bar, Ac	1
... 6	C3	246841	Capacitor, Elctl 35000 uF 100 VDC Can 3.00 Dia	2
... 7		239547	Washer, Flat Nylon .516 Id X 1.250 Od X .062 Thk	2
... 8		202853	Screw, M 6-1.0x 14 Hex Hd-Plt Stl Pld Sems	8
... 9		602207	Washer, Lock .255idx0.489odx.062t Stl Pld Split.250	4
... 10		227186	Washer, Flat .254idx0.468odx.090t Stl Zc Cl	4
... 11		217283	Bolt, Crg Stl .250-20 X .750 Gr5 Pld	1
... 12		152461	Nut, 250-20 .44hex .23h Stl Pld Sem Cone Wshr.65d	1
... 13		223039	Screw, 250-28x .75 Hex Hd-Pln Stl Gr5 Pld Zinc Blk	2
... 14		223040	Screw, 250-28x .87 Hex Hd-Pln Stl Gr5 Pld Zinc Clr	2
... 15		247093	Stand-Off, Conductive Bus	2
... 16		250346	Bracket, Mtg Capacitors	1
... 17		602154	Screw, 250-20x .50 Hexwhd.50d Stl Pld Slffmg Tap-Rw	2
... 18		269559	Circuit Card Assy, Wcc Filter Network Potted	2
... 19		279485	Bracket, Mtg Wcc Filter Network Potted Assy	2
... 20	HD1, HD21	168829	Transducer, Current 1000A Module Max Open Loop	2
... 21		256489	Bracket, Support Vault	1
... 22	R10, R210	188067	Resistor, Ww Fxd 100 W 200 Ohm W/Clips	2
... 23		259039	Bracket, Rectifier	1
... 24		279872	Rectifier, Si 3ph 300 Amp 600 Piv	2

To maintain the factory original performance of your equipment, use only Manufacturer's Suggested Replacement Parts. Model and serial number required when ordering parts from your local distributor.

Eff w/Serial No. MH260921R And Following

☞ Hardware is common and not available unless listed.

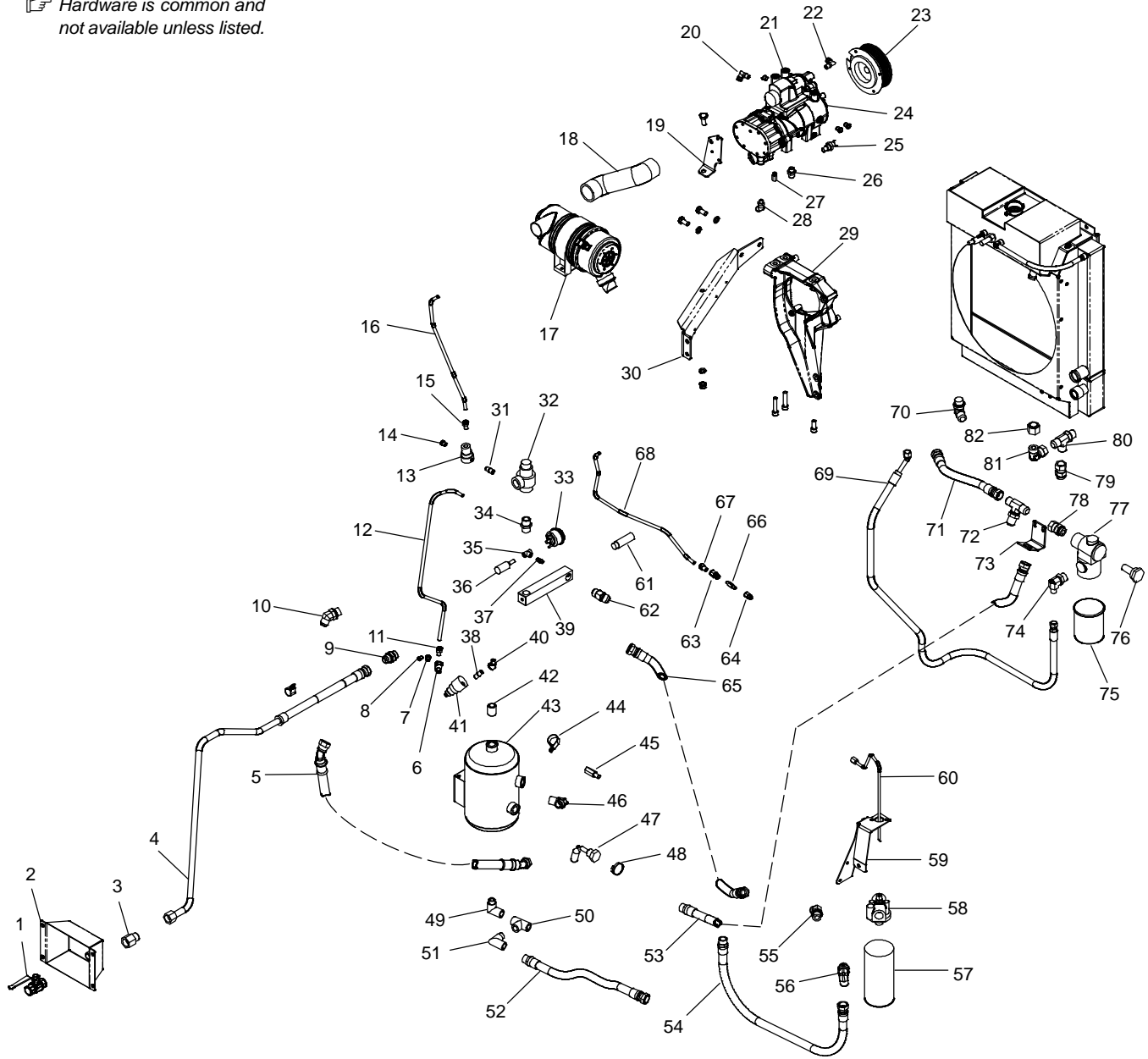


Figure 1-11. Air Compressor

255 862

Item No.	Dia. Mkgs.	Part No.	Description	Quantity
----------	------------	----------	-------------	----------

Figure 1-11. Air Compressor (Figure 1-1 Item 54)

...	1	233721	Valve, Ball	1
...	2	206606	Box, Valve Ball	1
...	3	210523	Ftg, Flrd Stl Tube End/Female Pipe End 3/4	1
...	4	209635	Hose, Tubing Oil Assy W/Fittings 42.360lg	1
...	5	260299	Hose Assy, Air W/Fittings 3/4 X 37.000 Lg	1
...	6	071270	Ftg, Pipe Brs Tee St 1/4 Npt 071269	1
...	7	602887	Ftg, Pipe Brs Plug Hexhd 1/4 Npt	1
...	8	151662	Ftg, Pipe Brs Plug Hex .125 Npt	1
...	9	209621	Ftg, Stl Adapter 3/4 Sae-3/4 Jic	1
...	10	240354	Ftg, Stl Adapter 3/4 Sae-3/4 Jic 45 Deg	1
...	11	209854	Ftg, Pipe Stl Adapter M 1/4 Npt X 1/4 Line	1

Eff w/Serial No. MH260921R And Following


Item No.	Dia. Mkgs.	Part No.	Description	Quantity
Figure 1-11. Air Compressor (Continued)				
12		260317	Hose, Nylon Blue 1/4 Id X 3/8 Od X 30-1/2 Lg	1
13		210054	Valve, Automatic Blowdown	1
14		210040	Orifice/Muffler, Blowdown .120	1
15		209854	Ftg, Pipe Stl Adapter M 1/4 Npt X 1/4 Line	1
16		260318	Hose, Nylon Red 1/4 Id X 3/8 Od X 23-1/2 Lg	1
17		249657	Air Cleaner, Intake 5.250 In	1
		*197676	Element, Air Cleaner	1
18		254976	Hose, Air Intake	1
19		253948	Bracket, Mtg Compressor (Back)	1
20		260374	Ftg, Pipe Brs Elbow/Adapter M 1/4 Npt X 3/8 Od Line	1
		210016	Gasket, Unloader Valve	0
21		218305	Valve, Inlet Unloader 90dg	1
22		260374	Ftg, Pipe Brs Elbow/Adapter M 1/4 Npt X 3/8 Od Line	1
23		256685	Clutch, Electro Magnetic 12VDC W/8 Groove Pulley	1
24		210001	Airend, Gear-driven W/Tapered Input Shaft	1
		258419	Kit, Compressor Front Seal	0
25		206742	Switch, High Air Temperature 248f Nc	1
26		209853	Ftg, Pipe Stl Adapter M M16 1.5 X 1/2 Jic	1
27		209852	Ftg, Pipe Stl Adapter M M10 X 1/8 Npt F	1
28		260369	Ftg, Pipe Brs Elbow/Adapter M 1/8 Npt X 3/8 Od Line	1
29		253946	Bracket, Mtg Compressor (Prior to MJ330071R)	1
29		281512	Bracket, Mtg Compressor (Eff w/MJ330071R)	1
30		253951	Bracket, Mtg Compressor (Side)	1
31		117826	Ftg, Pipe Brs Nipple Close 1/4 Npt	1
32		210051	Valve, Check Minimum Pressure	1
33		272762	Sender, Pressure Oil 0- 200 Psi	1
34		209767	Ftg, Pipe Stl Connector M 3/4 Sae-npt Adapter	1
35		602965	Ftg, Pipe Brs Tee 1/8 Npt	1
36		206746	Switch, Pressure 20psi Nc	1
37		073655	Ftg, Pipe Brs Nipple Hex 1/8 Npt	1
38		117826	Ftg, Pipe Brs Nipple Close 1/4 Npt	1
39		206937	Manifold, Air	1
40		084999	Ftg, Pipe Brs Elbow St 45 1/4 Npt	1
41		210053	Valve, Pressure Regulator	1
42		209787	Ftg, Pipe Stl Nipple Close 3/4 Npt Schedule 80	1
43		206939	Tank, Oil Separator	1
44		127854	Clamp, Stl Cush 1.312 Dia X .343 Mtg Hole	1
45		260442	Stand-off, M12-1.75 Male X1/4-20 Fem .75 Hex 1.5 Lg	1
46		260323	Ftg, Stl Elbow M 90deg 3/4 X (Npt-jic 90deg)	1
47		210058	Gauge, Oil Level (Modified)	1
48		247624	Pointer Assembly	1
49		209457	Ftg, Pipe Stl Elbow St 3/4 Npt	1
50		209766	Ftg, Pipe Stl Tee Street 3/4 Npt M-f-f	1
51		209457	Ftg, Pipe Stl Elbow St 3/4 Npt	1
52		209638	Hose, Oil W/Fittings 25.670 Lg	1
53		209639	Hose, Oil W/Fittings 23.320 Lg	1
54		210248	Hose Assy, Air W/Fittings 3/4 X 35.250 Lg	1
55		260324	Ftg, Stl Elbow 45d 3/4-bspp(M) O-ring X 3/4 Jic M	1
56		214686	Ftg, Pipe Stl Elbow 90dg 3/4bspp O-ring X 3/4 Jic M	1
57		*206747	Separator, Oil/Air Filter	1
58		220326	Head, Spin On Separator	1
59		255515	Bracket, Mtg Filter Base	1
60		259231	Tubing, Sst .312 Od X.028 W/Ftgs	1
61		206743	Valve, Safety Relief 150psi	1
62		209754	Ftg, Stl Elbow 45 Deg 3/4 Npt (M) X 3/4 Jic (M)	1
63		209755	Ftg, Pipe Stl Swivel F 1/4 Npt X 1/4 F Jic	1
64		209856	Ftg, Stl Adapter Tube End Reducer 04f X 05m	1
65		214685	Hose Assy, Air W/Fittings 3/4 X 20.750 Lg	1

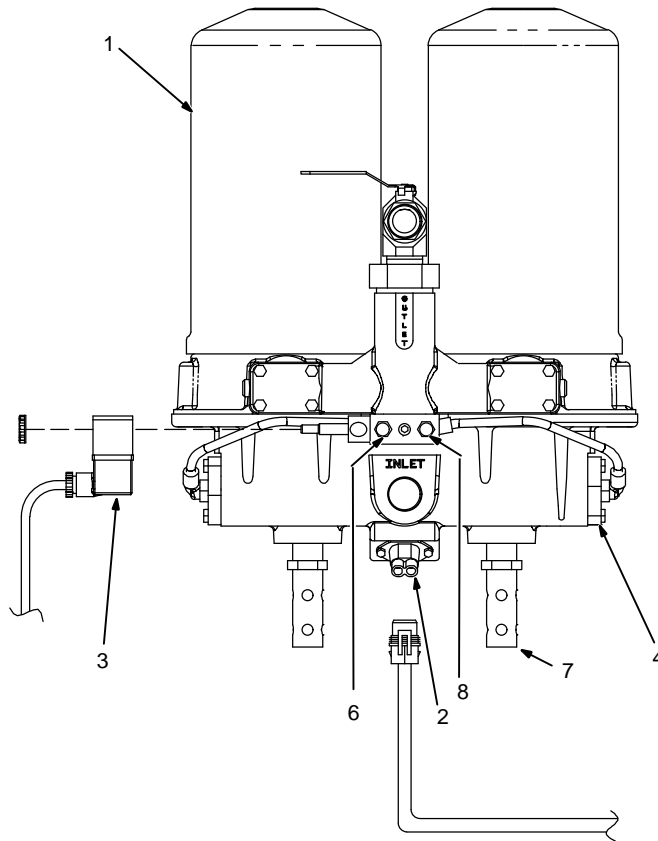
Eff w/Serial No. MH260921R And Following

Item No.	Dia. Mkgs.	Part No.	Description	Quantity
Figure 1-11. Air Compressor (Continued)				
... 66		210027	.. Valve, Check/Scavenge Orifice/Screen	1
... 67		209854	.. Ftg, Pipe Stl Adapter M 1/4 Npt X 1/4 Line	1
... 68		263516	.. Hose, Nylon White 1/4 Id X 3/8 Od X 33 Lg	1
... 69		258630	.. Hose, Tubing Oil Assy W/Fittings 42.500lg	1
... 70		209765	.. Ftg, Pipe Stl Elbow Adapter 90dg 3/4 Sae-jic-	1
... 71		210250	.. Hose Assy, Oil W/Fittings 3/4 X 15.500 Lg	1
... 72		210252	.. Ftg, Stl Bulkhead Branch Tee 3/4 Flare Tube End	1
... 73		256486	.. Bracket, Mtg Tubing	1
... 74		209756	.. Ftg, Pipe Stl Elbow M 90dg 1/2 Jic X 3/4 Sae	1
... 75		*206745	.. Filter, Oil	1
... 76		206744	.. Thermostat, 170f	1
... 77		210052	.. Valve, Oil Temperature Control	1
... 78		210251	.. Ftg, Stl Swivel Straight Thread Conn 3/4 O-ring	1
... 79		210251	.. Ftg, Stl Swivel Straight Thread Conn 3/4 O-ring	1
... 80		260477	.. Ftg, Pipe Stl Tee Branch Sae-12 X Jic-12	1
... 81		256393	.. Ftg, Stl Elbow 90 Deg Ns 3/4 F Jic X 3/4 M Orfs	1
... 82		209851	.. Ftg, Pipe Stl Tube End Cap 3/4 Orfs	1
.....		*279121	.. Filter Kit, Ingersoll Rand (Ce55 G1)	1

*Recommended Spare Parts.

To maintain the factory original performance of your equipment, use only Manufacturer's Suggested Replacement Parts. Model and serial number required when ordering parts from your local distributor.

 Hardware is common and not available unless listed.



803 328

Figure 1-12. Optional Air Dryer Assemblies

Item No.	Dia. Mkgs.	Part No.	Description	Quantity
----------	------------	----------	-------------	----------

Figure 1-12. Optional Air Dryer Assemblies

...	1	193362	.. Cartridge, Desiccant	2
...	2	193365	.. Heater Assembly, 12 V 75 W	1
...	3	219491	.. Timer, Ctrl w/Cord & Plug (2 Min Cycle)	1
...	4	219492	.. Kit, Unloader Valve (Valve/Misc O-rings/Seals)	1
...	5	219493	.. Kit, Inlet Valve (Check Valve/Spring/Gasket/O-rings) (Not Shown)	1
...	6	248678	.. Muffler, Exhaust	2
...	7	242536	.. Muffler, Air	2
...	8	239786	.. Valve, Ctrl (Valve/Solenoid) 12 V	1
...		264669	.. Harness, Air Dryer T2000	1

Additional Components For Optional Rear Mounting Configuration:

...		271044	.. Cover, Battery Access Air Dryer Rear Assy	1
...		213132	.. Hose, Tubing Oil Assy	1
...		272334	.. Label, Warning Moving Parts (En/Fr-Sym)	1
...		272341	.. Label, Warning Battery Explosion (En/Fr-Sym)	1
...		272335	.. Label, Notice Do Not Disconnect Batt(En/Fr/Sp-Sym)	1
...		213132	.. Hose, Tubing Oil Assy	1
...		209768	.. Ftg, FIRD Stl Conn M 3/4 Npt-Jic	1
...		244259	.. Bolt, Lag Stl .500 X 3.000 Pld	4
...		602247	.. Washer, Flat .531idx1.062odx.095t Stl Pld Ansi.500	4
...		602154	.. Screw, 250-20x .50 Hexwhd.50d Stl Pld Slffmg Tap-Rw	2

To maintain the factory original performance of your equipment, use only Manufacturer's Suggested Replacement Parts. Model and serial number required when ordering parts from your local distributor.

Eff w/Serial No. MH260921R And Following

☞ Some wiring harness components (switches, relays, supplementary protectors) are also referenced elsewhere in this parts list. Purchase components separately or as part of the associated wiring harness.

Item No.	Dia. Mkgs.	Part No.	Description	Quantity
Wiring Harnesses				
		279503	Harness, Engine Deutz (All Models) (Includes) (Prior to NA330570R)	1
		288336	Harness, Engine Deutz (All Models) (Includes) (Eff w/NA330570R)	1
		279502	Lead Assy, Elect W/Splices (Eff w/NA330570R)	1
		288408	Lead Assy, Elect W/Splices (Eff w/NA330570R)	1
		258958	Lead Assy, Twisted Pair W/Resistor	1
		258113	Cable, Interconnecting 3 Ft 6.000 In	2
	PLG12	215261	Conn, Deutsch 12p 2row Female Plug	1
	PLG4	238028	Conn, Deutsch 6p 2row Female Plug	1
	PLG409	177859	Conn, Body 5 Terminal	1
	PLG14-16	148850	Socket, Relay 5 Pin	3
	PLG400	258798	Conn, Rect Quadlok Rcpt 94 Pos R Ang	1
	PLG400_1	258809	Conn, Rect Quadlok Cover 94 Posn	1
	PLG400_2	258807	Conn, Rect Quadlok Retainer Large 94 Posn	1
	PLG400_3	258808	Conn, Rect Quadlok Retainer Small 94 Posn	1
	PLG400_4,			
	401_5	258803	Plug, Cavity	83
	PLG400_5,			
	401_4	258804	Plug, Cavity	12
	PLG400_6	258811	Seal, Plug Single Wire	6
	PLG401	258794	Conn, Rect Quadlok Rcpt 60 Pos R Ang	1
	PLG401_1	258802	Conn, Rect Quadlok Cover 60 Posn	1
	PLG401_2	258805	Conn, Rect Quadlok Lever 60/94 Posn	2
	PLG401_3	258806	Conn, Rect Quadlok Retainer 60 Posn	1
	PLG402	258716	Conn, Rect Mcp 62 Pos 1.5k/2.8mm Ra	1
	PLG402_1	258721	Conn, Rect Mcp Cover 62 Posn	1
	PLG402_3	240071	Plug, Cavity 2.5mm Din72585	4
	PLG402_2, 403_2,			
	405_2, 408_3	258720	Plug, Cavity 3.6mm	25
	PLG402_4	240074	Seal, Plug Single Wire (5mm Hole)	12
	PLG402_5	258719	Seal, Plug Single Wire	24
	PLG403, 405	258701	Conn, Circ Cpc 4skt Plug Cable Pushin Din72585	2
	PLG403_1, 405_1	258708	Seal, Plug Single Wire (2.5mm Hole) Din72585	6
	PLG404	240077	Conn, Rect Jpt 2 Pos 1 Row	1
	PLG406	240098	Conn, Circ Cpc 12skt Size 14	1
	PLG406_1	240099	Conn, Circ Cpc Cap Plg	1
	PLG406_2	240100	Conn, Circ Cpc Clamp	1
	PLG407	258709	Conn, Rect Ng1 2pos Plug Cable	1
	PLG407_1	258715	Seal, Plug Single Wire (8mm Hole) Ng1	2
	PLG408	258722	Conn, Circ Cpc 4pin Rcpt Panel Pushin Din72585	1
	PLG408_1	258724	Seal, Plug Single Wire	3
		215265	Conn, Deutsch Wedge Lock 12 Position	1
		238029	Conn, Deutsch Wedge Lock 6 Position	1
	PLG410	212116	Conn, Deutsch 2p 1row Female Plug	1
		212117	Conn, Deutsch Wedge Lock 2 Position	1
		288236	Holder, Fuse Bolt Down 32V 200A (Eff w/NA330570R)	1
	F3	288238	Fuse, Auto 80A 32VDC Auto Link (Eff w/NA330570R)	1
		259189	Harness, Air Compressor Air Pak (Includes) (Prior to NA230715R)	1
		288377	Harness, Air Compressor Air Pak (Includes) (Eff w/NA230715R)	1
	S10	206624	Switch, Tgl Sptt 6A 125VAC (On)-On-(On)Spd Term	1
	C10/D10	189701	Diode/Capacitor Board	1
	CB15	083432	Supplementary Pro, Man Reset 1p 10A 250VAC Frict	1
	CR10	113247	Relay, Encl 12VDC Dpdt 20A/120VAC 8pin Flange Mtg	1
	Mid	129524	Term, Frict 250x032 Uninsul Male .130 Stud Mtg 3pr	1
	Clutch	212116	Conn, Deutsch 2p 1row Female Plug	1
	CR11	173069	Relay, Encl 12VDC Spdt 50A/30A 5pin Flange Mtg (Eff w/NA230715R)	1
		148850	Socket, Relay 5 Pin (Eff w/NA230715R)	1

Eff w/Serial No. MH260921R And Following

Item No.	Dia. Mkgs.	Part No.	Description	Quantity
Wiring Harnesses				
.....		279497	Harness, Weld (800 Models) (Includes) (Prior to NA330570R)	1
.....		288365	Harness, Weld (800 Models) (Includes) (Eff w/NA330570R)	1
.....	RC98	135133	Conn, Rect Univ 084 9p/S 3row Rcpt Cable/Panel Lkg	1
.....		287721	Lead Assy, Elect (Eff w/NA330570R)	1
.....		288411	Lead Assy, Elect (Eff w/NA330570R)	1
.....	RC30	229933	Conn, Rect Univ 039 10p/S 2row Rcpt Cable/Panel Lkg	1
.....	PLG3	114655	Conn, Rect Mini 045 6skt 2row Plug Cable Lkg	1
.....	PLG4,PLG24	116513	Conn, Rect Mini 045 12skt 2row Plug Cable Lkg	2
.....	PLG5,PLG25	113752	Conn, Rect Mini 045 10skt 2row Plug Cable Lkg	2
.....	PLG6,PLG26	113751	Conn, Rect Mini 045 8skt 2row Plug Cable Lkg	2
.....	PLG9,PLG29	117037	Conn, Rect Mini 045 2skt 2row Plug Cable Lkg	2
.....	PLG10,PLG210	113750	Conn, Rect Mini 045 4skt 2row Plug Cable Lkg	2
.....		129524	Term, Frict 250x032 Uninsul Male .130 Stud Mtg 3pr (Prior to MJ170420R)	1
.....		278891	Harness, Weld (600 Air Pak Models) (Includes)	1
.....	PLG9	117037	Conn, Rect Mini 045 2skt 2row Plug Cable Lkg	1
.....	PLG3	114655	Conn, Rect Mini 045 6skt 2row Plug Cable Lkg	1
.....	PLG5	113752	Conn, Rect Mini 045 10skt 2row Plug Cable Lkg	1
.....	PLG10	113750	Conn, Rect Mini 045 4skt 2row Plug Cable Lkg	1
.....	PLG4	116513	Conn, Rect Mini 045 12skt 2row Plug Cable Lkg	1
.....	RC98	135133	Conn, Rect Univ 084 9p/S 3row Rcpt Cable/Panel Lkg	1
.....		129524	Term, Frict 250x032 Uninsul Male .130 Stud Mtg 3pr	1

Item No.	Dia. Mkgs.	Part No.	Description	Quantity
Optional Components For Wireless Interface Control				
.....		286598	Kit, Remote Module/Fob (Includes)	1
.....		286602	Module, Fob Radio Receiver	1
.....		286599	Module, Radio Receiver	1
.....		286600	Module, Antenna Radio Receiver	1
.....		287593	Bracket, WIC Receiver	1
.....		288362	Harness, Wrg Remote (Includes)	1
.....		288367	Lead Assy, Twisted Pair	1
.....		288382	Lead Assy, Elect w/Resistor	1
.....		288383	Lead Assy, Elect	1
.....	PLG411	177559	Conn, Body 5 Terminal	1
.....	PLG7, PLG27	285708	Conn, Rect Mx120g 12pin 2row Rcpt	2
.....	PLG64	158465	Conn, Rect Unit 084 12p/s 3row Plug Cable Lkg	1
.....	RC409	286535	Conn, Body 5 Terminal Rcpt	1
.....		250930	Alarm, Piezo Slow Pulse 4-16VDC 105/100 dBA	1
.....		287538	Plug, Cavity	9
.....		187654	Seal, Wire Univ 12p/s 3row	1
.....		286634	Label, Warning Remote Start	1
.....		286737	Cable, Charging USB	2
.....		286604	Charger, USB	2

Eff w/Serial No. MH260921R And Following

Item No.	Dia. Mkgs.	Part No.	Description	Quantity
Optional Components For Work Truck Configurations (907750001, 907750002, 907752001, 907752002)				
.....		279788 ..	Panel, Front Engine/Weld W/Cmpnts (800 Models)	1
.....		279787 ..	Panel, Front Engine/Weld W/Cmpnts (600 Models)	1
.....		279791 ..	Control Panel, Lower Truck Mount	1
.....		196093 ..	Arrestor, Flame Fuel Cap Green W/3.500 Buttress Thd	1
.....		205712 ..	Spark Arrestor	1
.....		234540 ..	Spark Arrestor Mounting Kit (Horizontal)	1
.....		1065370010097 ..	Gauge, Informer Air Restriction For Air Cleaner	2
.....		263393 ..	Hose, Air Indicator W/Ftgs 17 In.	2
.....		263395 ..	Ftg, Pipe Galv Elbow 90deg 1/8 Npt(M) X 1/8 Npt(F)	1
.....		010926 ..	Hanger, Minerallic No 2	2
.....		604224 ..	Screw, 250-20x .75 Hexwhd.50d Stl Pld Slffmg Tap-Rw	2
.....		176318 ..	Padlock, Master Lock No 3ka 3212 Keyed Alike	1
.....		210744 ..	Lock-Out Vandalism (Starting Panel Rr) (Includes)	1
.....		210745	Bezel, Mounting	1
.....		210746	Door, Access	1
.....		210747	Hinge, Cont Stl Stnls .042 X 1.250 X 5.000	1
.....		152461 ..	Nut, 250-20 .44hex .23h Stl Pld Sem Cone Wshr.65d	1
.....		270752 ..	Ftg, Stl Elbow 90 Deg 1/8 Ntp(F) To 1/8 Swivel(F)	2
.....		261874 ..	Label, Weight & Dimensions Ap Rr	1
.....		210972 ..	Label, Stop Engine 1 In High Letters Rr	1

Miller Electric Mfg. LLC

An Illinois Tool Works Company
1635 West Spencer Street
Appleton, WI 54914 USA

International Headquarters—USA

USA Phone: 920-735-4505 Auto-Attended
USA & Canada FAX: 920-735-4134
International FAX: 920-735-4125

For International Locations Visit

www.MillerWelds.com

