

OBRIEN®



INFLATABLE SUP OWNERS MANUAL

• IMPORTANT INFORMATION •

READ THIS MANUAL THOROUGHLY BEFORE USING

⚠ WARNING

Use of this product and participation in the sport involves inherent risks of injury or death. To reduce risks:

- This product should never be used by children except under adult supervision.
- This board is not a life saving device.
- Always wear a U.S. Coast Guard approved Type III (PFD) Life Jacket.
- Stay in contact with your board. Always wear a leash connected to you and your board. If separated, wind and current can carry the board faster than you can swim.
- Inspect all equipment prior to use. Do not use if damaged.
- Do not tow or attempt to ride this board behind a boat or vessel.
- Use of this board requires skill and physical ability. It is to be used by proficient swimmers only.
- Always check with proper authorities regarding water and weather conditions prior to use. Do not use in high surf, high wind conditions, rapids, near swimmers or other boats.
- Do not use in shallow water, reef areas or high current water conditions. Scout unfamiliar water, know the waterways.
- Observe all federal and local water use regulations.
- Do not dive head first into the water from this board.
- This board is designed to be used by one person only.
- Never paddle alone.
- Never operate this product while under the influence of alcohol or drugs.
- Always Read Operator's Manual before use.

WARNING: This product may contain a chemical known to the state of California to cause cancer, or birth defects or other reproductive harm.

**OBRIEN. 7926 BRACKEN PLACE SE
SNOQUALMIE, WA 98065**

www.obrien.com

PRINTED IN CHINA

**THANK YOU FOR BUYING THIS OBRIEN ISUP!
IF YOU HAVE ANY QUESTIONS ON THIS OR ANY OBRIEN PRODUCTS
PLEASE CALL 1-800-6-OBRIEN**

**OBRIEN 7926 BRACKEN PLACE SE
SNOQUALMIE, WA 98065
www.obrien.com**

IMPORTANT PRODUCT INFORMATION

- PLEASE READ CAREFULLY BEFORE USE -

1. Inflating your SUP

O'Brien recommends using the high pressure hand pump that comes with the purchase of your inflatable paddle board.

Remove the valve cover from the valve by unscrewing it ¼ turn counter-clockwise until the valve cover releases. Make sure the air release valve is in the 'up' position by pressing down with your thumb and turning to the right until it rebounds to the 'up' position when you release your finger. You can check if the air release valve is in the 'up' position by pressing on the valve. If it depresses then returns to the 'up' position, the valve is in the proper position and your ISUP is ready to be inflated.

Attach the hose of the hand pump to the valve by inserting the hose and turning clockwise ¼ turn so the hose is securely attached to the valve.

Stand on the base of the hand pump with one foot on each side and begin pumping air into your ISUP by depressing and retracting the handle on the pump. You will hear air flowing into your ISUP. Continue to pump air until the PSI gauge on the pump reads a minimum of 14 PSI. Do not exceed 18 PSI.

Once you have achieved the proper PSI, return the valve cover by inserting it over the air release valve and turning the valve cover clockwise until it will not turn any more. This is the closed position.

2. Deflating your SUP

Turn valve to the 'down' position by pressing down with your thumb and turning to the right until it lock and air releases.

3. Storage and Care

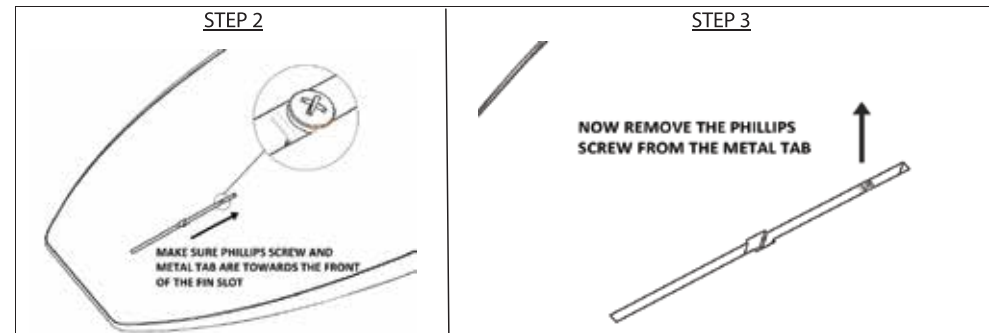
When not in use, rinse off with fresh water and store in a cool dry place out of direct sunlight. The ISUP should be deflated if it is not to be used for an extended period of time. Using common sense and reasonable care will greatly extend the life of this product.

4. Construction and Warranty

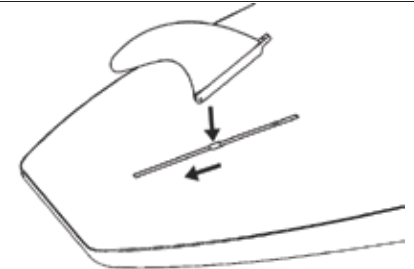
This item is manufactured of the highest quality materials available and is designed to provide hours of fun when used under the proper conditions. Manufacturer's warranty covers defects in materials and workmanship for a period of one year.

OBRIEN SUP Center Fin Setup Instructions

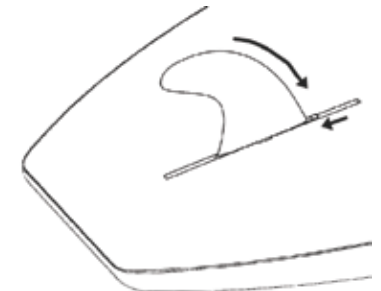
STEP 1 – CAREFULLY set the board on a soft surface so that the bottom is facing upwards and locate the center fin box near the tail of the board.



STEP 4 – ORIENT THE FIN AS SHOWN IN THE IMAGE TO THE RIGHT. LOCATE THE BRASS PINS AT THE REAR OF THE FIN AND INSERT INTO THE WIDE PART OF THE FIN SLOT. ONCE INSERTED, SLIDE THE FIN REARWARDS UNTIL THE FIN IS NEAR CENTERED IN THE SLOT.



STEP 5 – ROTATE THE FRONT EDGE OF THE FIN DOWNWARDS AND ALIGN THE METAL TAB WITH THE HOLE IN THE FRONT OF THE FIN. ONCE ALIGNED, INSERT THE PHILLIPS SCREW IN THE HOLE AND TIGHTEN. AS A GENERAL RULE, IF YOU WANT YOUR BOARD TURN MORE EASILY, MOVE THE FIN FORWARD. IF YOU WANT IT TO TRACK BETTER, MOVE IT REARWARD. OBRIEN RECOMMENDS STARTING AT NEAR CENTER AND ADJUSTING AS NEEDED.



These are guidelines but feel free to test out different combinations to find what works best for you.

Storage and Care

When not in use, rinse off with fresh water and store in a cool dry place out of direct sunlight. Using common sense and reasonable care will greatly extend the life of this product.

Construction and Warranty

This item is manufactured of the highest quality materials available and is designed to provide hours of fun when used under the proper conditions. Manufacturer's warranty covers defects in materials and workmanship for a period of one year.