

# Chateau Ste Michelle

EVENTS GUIDE



# TABLE OF CONTENTS

A NORTHWEST CLASSIC

WINE AND FOOD EXPERIENCE

EVENT SPACES :

LOBBY

MANOR HOUSE

SUNKEN GARDEN

BANQUET ROOM

WINE SHOP & VISITOR CENTER

THEATER ROOM

BLEND ROOM

HORSE HEAVEN SALON

COURTYARD

AMPHITHEATRE

CAPACITY CHART

FLOOR PLANS

CONTACT



## A NORTHWEST CLASSIC

### MORE THAN A VENUE

Chateau Ste. Michelle is more than a venue for corporate events or celebrations. A visit provides an informative and unforgettable wine and food experience which is complemented by our impeccable service and elegant surroundings.

# WINE AND FOOD EXPERIENCE

## CULINARY EXPERTISE

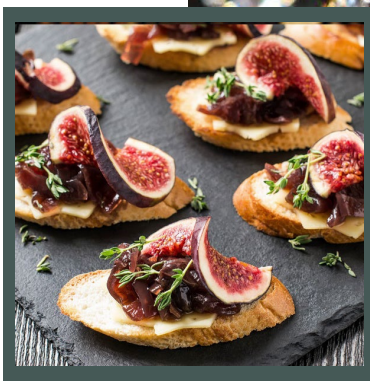
Chateau Ste. Michelle is dedicated to showcasing highly acclaimed wines paired with a variety of food offerings from our preselected Pacific Northwest caterers. Their extensive experience offers a foundation for their creative presentations and wine pairings.

## PRICING

Venue pricing includes room selected, tables, chairs, linens, candles and on-site parking. Chateau Ste. Michelle Limited Release wines are provided to guests for \$35 per adult.

We offer wine pairings with dinner at \$40 per adult.

*\*Service fee of 20% and sales tax of 10.3% will be added. Please refer to Event Information & Policies page for venue pricing.*





## CHATEAU LOBBY

**MAX CAPACITY:**  
85 Guests  
**BEST FOR:**  
• Reception Style

### ROOM DETAILS

- Max Capacity Reception Style: 85 guests
- Room comes as is with furniture remaining in place

### VENUE PRICING

- \$1,500 from 6:00 - 8:00pm
- Available after hours only

This space can be used privately after hours for receptions prior to dinner service in either the Manor House or the Banquet Room. Reservation required.

The Chateau Lobby is open to the public from 11:00am-5:00pm daily. This space is adjacent to our Club Room and Library.



## MANOR HOUSE

**MAX CAPACITY:**  
60 Guests Reception Style  
48 Guests Seated

**BEST FOR:**

- Served Lunch or Dinner
- Buffet Lunch or Dinner
- Appetizer Reception

### ROOM DETAILS

- Max Capacity Reception Style: 60 guests
- Max Capacity Seated: 48 guests
- Wi-fi and Presentation Capabilities

### VENUE PRICING

- \$3,000 for events under 20 people
- \$3,500 for events over 21 people
- Add \$500 for events in December
- Add \$750 to include Manor House Back Lawn

The Manor House is an ideal setting for a unique and intimate dining experience. Classic windows and French doors overlooking a formal garden encase the open room. A centerpiece fireplace welcomes guests to the main dining area, surrounded with one-of-a-kind glass by renowned artist, Dale Chihuly.



## SUNKEN GARDEN

**MAX CAPACITY:**  
60 Guests Reception Style  
**BEST FOR:**  
• Appetizer Reception

### ROOM DETAILS

- Max Capacity Reception Style: 60 guests

*Sunken Garden will transition to the cabanas May-September, and igloos will be set up during the fall through spring.*

### VENUE PRICING

- \$2,000 after 6:00pm April - October
- \$1,500 after 6:00pm November - March
- Additional \$500 for events taking place after 5:00pm on Thursday-Sunday
- \*Space Sold as is

The Sunken Garden can be rented by itself or as an addition to the Manor House. This secluded space has an enchanting modern design with a backyard feel. Ideal for appetizer receptions, This space is rented as is. No wi-fi or presentation capabilities.

During business hours, the Sunken Garden is reserved for guests to enjoy wine by the glass or the perfect bottle to pair with a charcuterie plate.



**MAX CAPACITY:**

215 Guests

**BEST FOR:**

- Served Lunch or Dinner
- Buffet Lunch or Dinner
- Appetizer Reception

## BANQUET ROOM

### ROOM DETAILS

- Max Capacity for standing reception: 215 guests
- Max Capacity for a Served Dinner or Lunch: 160 guests
- Max Capacity for a Buffet Lunch or Dinner: 120 guests
- Wi-fi and Presentation Capabilities

### VENUE PRICING

- \$2,500 for events with 99 people and under
- \$3,000 for events with 100 people and over
- Add \$500 for events in December

Located within the Chateau, our Banquet Room is the perfect location to host larger groups in elegance and style. Its classic decor includes a barrel-vaulted ceiling, chandeliers, a large fireplace and original artwork.

Whether hosting an appetizer reception, seated meal or meeting, the Banquet Room is a warm and inviting room that is flexible and can seat up to 160 guests.



## WINE SHOP & VISITOR CENTER

### MAX CAPACITY:

150 Guests

### BEST FOR:

- Appetizer Reception

### ROOM DETAILS

- Max Capacity for standing reception: 150 guests
- Max Capacity combined with Banquet Room: 250-300 guests
- In-house Music
- No AV capabilities available

### VENUE PRICING

- \$3,000 for events 99 people and under
- \$3,500 for events 100 people and over
- \$4,500 for Friday and Saturday events, starting after 6:00pm
- Add \$500 for events in December

This space can be used privately after-hours for standing room only events starting at 6:00pm or later; 7:00pm or later Fridays and Saturdays. Reservation required.

Event capacity for this space is 150 guests for a standing reception, or combined with the warm and inviting Banquet Room, up to 250-300 guests.

The Wine Shop and Visitor Center is open to the public from 11:00am to 5:00pm.



## THEATER ROOM

### MAX CAPACITY:

65 Guests

### BEST FOR:

- Seminars and Meetings
- Group Tastings

### ROOM DETAILS

- Max Capacity: 65 guests
- Wi-fi and presentation capabilities

### VENUE PRICING

- \$2,000 for events Sunday through Thursday
- \$3,000 for events Fridays and Saturdays
- Available after hours only

Located within the Chateau's Visitor Center, our modern theater is the perfect location to host your next meeting or seminar. Comfortable seating and sleek wooden tables furnish this unique space.

With catering options available, the venue can seat up to 65 guests.



## BLEND ROOM

### MAX CAPACITY:

16 Guests

### BEST FOR:

- Plated Dinners

### ROOM DETAILS

- Max Capacity: 16 guests
- Wi-fi and presentation capabilities

### VENUE PRICING

- \$750 for two hours. Additional time \$100 per hour
- Available after hours only, 5:00pm or later
- Buyout costs available upon request

Located in the Visitor Center, the Blend Room is filled with oak barrels and a large oak table which creates an intimate space. Enjoy a private event in our Blend Room where you and your guests can all sit together and enjoy an amazing meal paired with fabulous wines.

Available after hours only, 5:00pm or later. During business hours the Blend Room is used for our Blend: Winemaker for a Day experience where guests can create their own custom red wine blend.

[◀ BACK TO TABLE OF CONTENTS](#)



# HORSE HEAVEN SALON

**MAX CAPACITY:**  
12 Guests  
**BEST FOR:**  
• Plated Dinners

### ROOM DETAILS

- Max Capacity: 12 guests
- Wi-fi and presentation capabilities

### VENUE PRICING

- \$500 for two hours. Additional time \$100 per hour
- Scheduling based on availability

Located in the Visitor Center, Horse Heaven Salon is a small intimate space used during business hours to host our VIP Private Tasting Experiences, as well as our Private Library Tastings.



## COURTYARD

### MAX CAPACITY:

500 Guests

### BEST FOR:

- Company Picnics
- Casual Events

### ROOM DETAILS

- Max Capacity: 500 guests

### VENUE PRICING

- Call or inquire for details

The Chateau Ste. Michelle Courtyard provides a scenic view of the grounds and the Chateau. Perfect for a causal event on a warm evening.



# AMPHITHEATRE

**MAX CAPACITY:**

1,500 Guests

**BEST FOR:**

- Company Picnics
- Casual and Music Events

### ROOM DETAILS

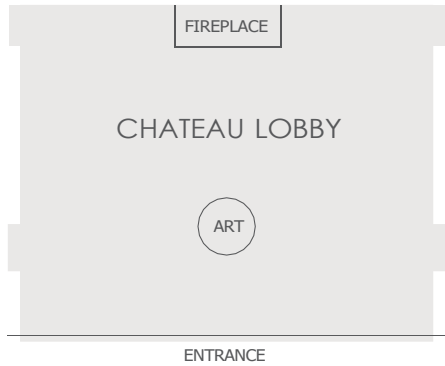
- Max Capacity: 1,500 guests

### VENUE PRICING

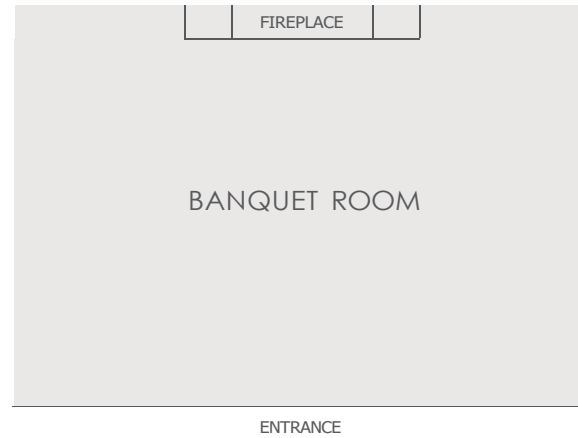
- Call or inquire for details

The Chateau Ste. Michelle Amphitheatre provides a unique setting of the concert field, the Chateau and Mount Rainier on a clear day.

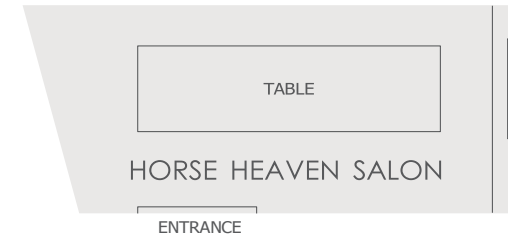
# FLOOR PLANS



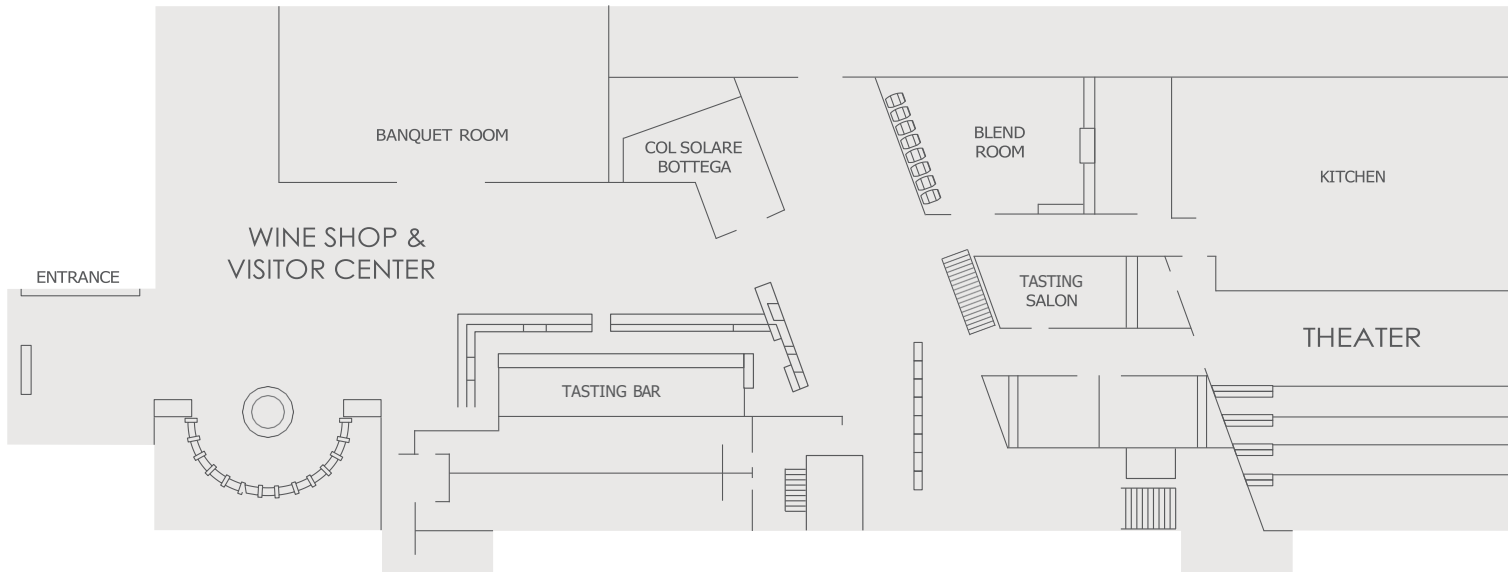
Lobby event capacity: 85 guests for reception-style



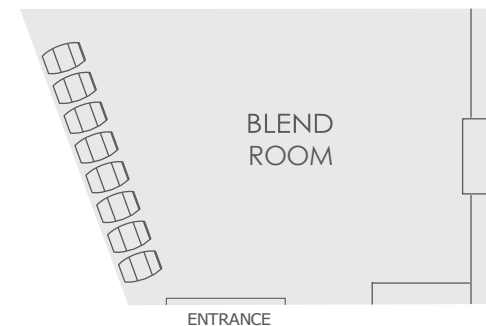
Banquet Room event capacity: up to 215 guests



Horse Heaven Salon event capacity: up to 12 guests



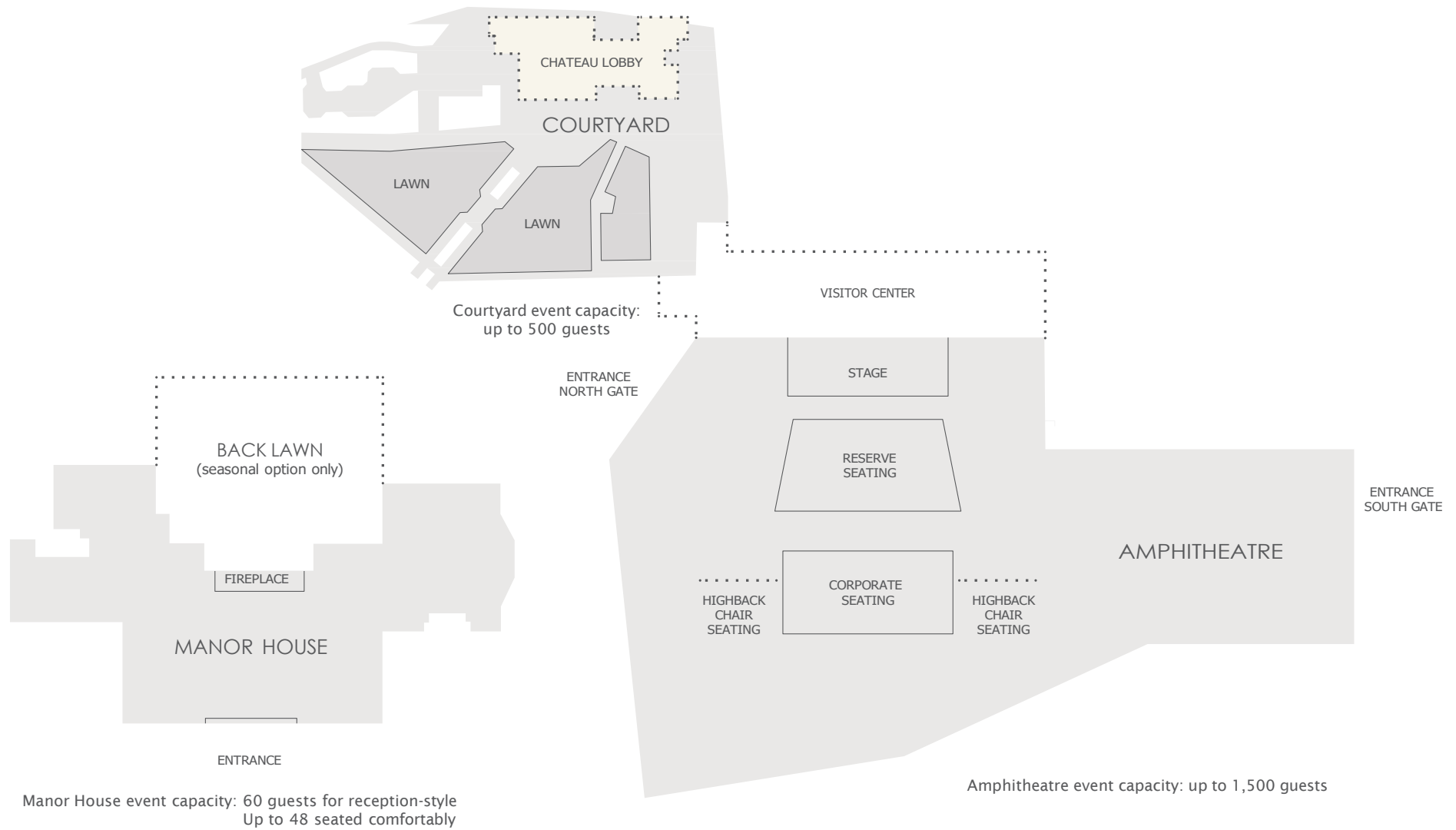
Wine Shop & Visitor Center event capacity: 150 guests for standing reception only  
with Banquet Room event capacity: 250-300 guest



Blend Room event capacity:  
16 guests for plated dinner

Theater Room event capacity: 65 guests only

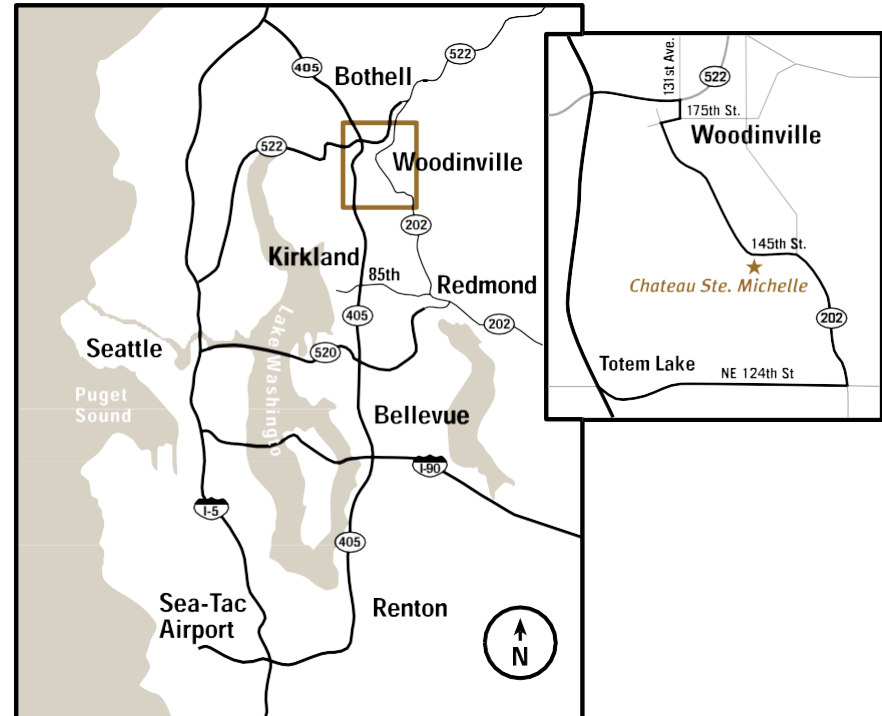
# FLOOR PLANS



# CONTACT

For additional information about booking an event, call 425.274.2605 or email [CSM.Events@smwe.com](mailto:CSM.Events@smwe.com).

Our on-site event professionals will help select a venue and caterer that is just right for your group.



14111 NE 145th St  
Woodinville, WA 98072

*Chateau  
Ste Michelle*

---

STE-MICHELLE.COM