



NEW WEBSITE USER GUIDE



[FIND PRODUCTS](#)

Search by model, part number, or keyword

[Sign in](#)[Quick Order](#)

(0)



WELCOME TO THE NEW GARDNERINC.COM

[LEARN MORE](#)

We've done our best to maintain consistency in our new environment, but we were required to make some changes. This guide is designed to help you navigate the new website.

[Signing In](#) *Page 3*

[Using the **Quick Order Tool**](#) *Page 4-5*

[Standard Search Bar](#) *Page 6*

[Illustrated Parts Lists](#) *Page 7*

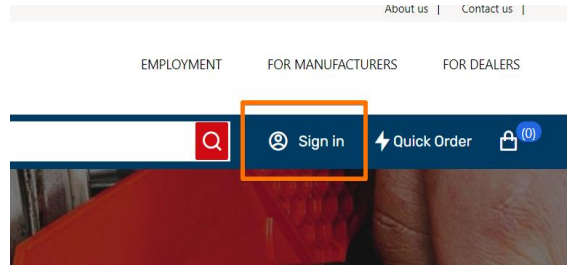
[PartSmart Web](#) *Page 8*

[New Shopping Cart & Promos](#) *Page 9*

[Technical Support](#) *Page 10*

Signing In

- Navigate to <http://www.gardnerinc.com>
- Click the **Sign In** button next to the search bar



- **Site Update:** You will notice that your username is now your email address; instead of your previously used account number

Username – Primary Email Address with Gardner Inc

Password – Current Password

(Note: Your Gardner account number will not change)

Sign in

Email address *

Password *

[Forgotten password?](#)

SIGN IN

Account Verification

Email address *

SEND VERIFICATION CODE

CHANGE E-MAIL

CONTINUE

CANCEL

- You can click on [Forgotten password?](#) if you need a new password or if you do not have one.
- You will need to verify your account with the primary email address associated with your Gardner account.
- If you don't know your email address or if you need help? *Call 888-GARDNER ext. 8312*
- **Site Update :** Whenever you sign in now, you are automatically placed in the **Standard** order status. You no longer need to click on the **Standard/Default Cart** upon login.

Quick Order

- The **Quick Order** tool is built for dealers that already know what part numbers they need. You will see part number formats for popular brands at the top of the page.
- **Site Update:** We've added the MFR code back to the Quick Order page to more accurately capture your part requests. Enter your part number, then select the MFR CODE that you need from the dropdown box. Press **Enter** and you can click to the next line for your next part. Your MFR CODE will fill in automatically if there is no alternate SKU.

Gardner EMPLOYMENT FOR MANUFACTURERS FOR DEALERS

FIND PRODUCTS Search by model, part number, or keyword MAC EQUIPMENT INC Quick Order (1)

Quick Order

All pricing will be displayed after items are added to the bag.

MFR CODE	PART NO.	QTY	ITEM NAME	AVAILABLE	DELETE
GEN - Gene	0D9723S	1	ELEMENT AIR FILTER PRE-BOX	0	
MTD - MTD	01005011P	2	BELT-V B SEC X 8	0	
Select		1			
Select		1			
Select		1			

ADD TO BAG **RESET FORM**

- Once you are done, double check your quantities and click **ADD TO BAG** to send the parts to your bag.

Quick Order CSV File Upload

- On the **Quick Order** page, below the part lines form, you can upload a **.csv** file to import into your cart.

	A	B	C	
1	manufacturer	part_number	qty	
2	HOP	532144200	1	
3	KOH	12 050 01-S	12	
4	MTD	725-05472	2	
5	GEN	070185BS	5	
6	MTD	942-0739	3	
7	GEN	073590A	1	
8	GEN	0G9449	3	
9	SI	07-153	1	
10	SI	07-257	1	
11	SI	07-259	1	
12	SI	07-450	1	
13	SI	75-336	3	
14	SI	75-405	1	
15	SI	75-474	1	
16				
17				
18				
19				

- There is a simple format to the csv formatting. Microsoft Excel is an easy program to get this done. *Manufacturer, Part_Number, Qty* are the 3 columns you will need to populate. Manufacturer codes in the drop-down boxes can be used as reference for column A.
- Click the **OPEN FILE DIALOG** box and select your file; or drag and drop your file over the box. This will populate the parts lines above.

Select 1

Select 1

Select 1

Drag and drop files to upload orders, or click this guide for more information:

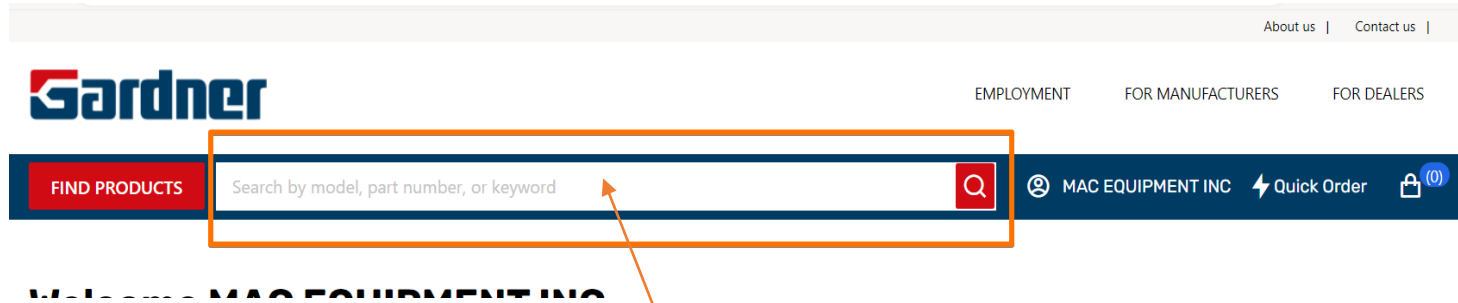
Drag and drop files here

Item Count:
Rows Failed to Import:

- Once you are done, double check your quantities and click **ADD TO BAG** to send the parts to your bag.

Standard Search Bar

- The standard search bar is the main place to enter model numbers and find ARI Illustrated Parts Lists. That being said, you can also search for regular parts here. However, if you already know your part numbers, we do suggest using **Quick Order**.




- Note:** Do not enter part numbers and model numbers at the same time. Be sure to double check your mfg code and part numbers, as some supercession data may be shown.
- When you enter a valid part number, the results will appear in the **Products** section.

"0D9723S"

1 product

Filter ▾

Sort by: Relevance ▾

	MFG, PART #	Description	Availability	List Price	Your Price	Quantity	
	GEN0D9723S	ELEMENT AIR FILTER PRE-BOX	0	\$36.81	\$23.93	<input type="text" value="1"/>	ADD TO BAG

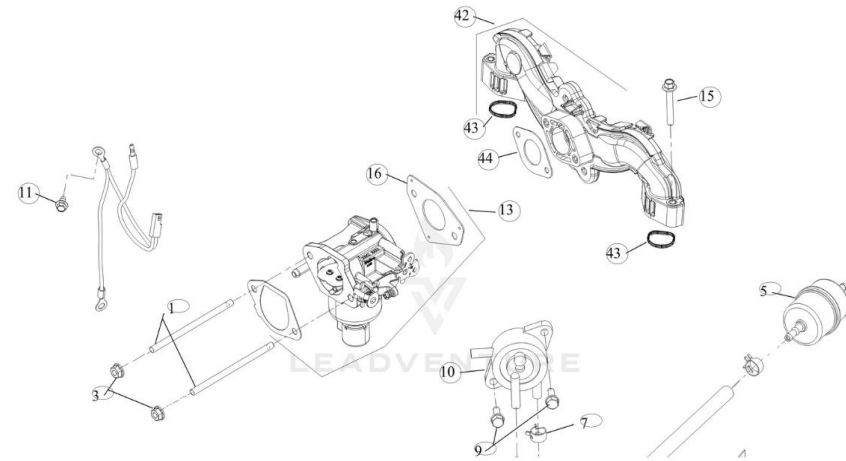
- If you're searching for IPLs, scroll down below the products section, and you will see the **Models (Illustrated Parts Lists)** section.

Illustrated Parts Lists

- When you enter a unit's valid model number, the results will appear in the **Models (Illustrated Parts Lists)** section at the bottom of the page.
- Scroll to the bottom of the search results page. Click on any MODEL to view the interactive *Illustrated Parts Lists*.

Models (Illustrated Parts List) 9 results		
Model	Manufacturer	Description
KT740-3035 Excel	Kohler Engines	KT740-3035 Excel
KT740-3079 MARKETING	Kohler Engines	KT740-3079 MARKETING
KT740-3080 Basic	Kohler Engines	KT740-3080 Basic
KT740-3093 Husqvarna	Kohler Engines	KT740-3093 Husqvarna
KT740-3094 BEIJING GREENMAN	Kohler Engines	KT740-3094 BEIJING GREENMAN
KT740-3095 MTD	Kohler Engines	KT740-3095 MTD
KT740-3097 MTD	Kohler Engines	KT740-3097 MTD
KT740-3099 Toro	Kohler Engines	KT740-3099 Toro
KT740-3100 MTD	Kohler Engines	KT740-3100 MTD

- Once you click on a model's link, a new page with the diagrams will appear. You will need to select a diagram at the top of the page.
- You can click directly on the parts numerical values to queue them up on the bottom of your browser.
- You can add the items directly to your cart from scrolling through the full parts list underneath the diagram.
- If you select a non-ARI standard IPL, it may only be a static PDF file.



Ref. ID	Part #	Description	Availability	Price	Qty	Order
1	KOH25 072 25-S	STUD	2	\$8.71	1	ADD TO CART
3	KOHM-641060-S	NUT, FLG M6X1.0	2	\$2.52	1	ADD TO CART

PartSmart Web

- We suggest using the standard search bar on the website to pull up ARI diagrams, but we do realize that some dealers are still using *ARI PartSmart Web*
- You'll have to copy your parts from *ARI PartSmart* and paste them into the *Quick Order* section of the website.

The screenshot displays the Gardner PartSmart Web interface. The search criteria are set to 'Model Begins with kt745-3011', resulting in one search result for '09 Engine Controls'. A parts list overlay is visible, showing a table with columns for MFR CODE, PART NO., QTY, ITEM NAME, AVAILABLE, and DELETE. An orange arrow points from the '25 083 01-s' part in the overlay to the corresponding part in the main parts list table.

MFR CODE	PART NO.	QTY	ITEM NAME	AVAILABLE	DELETE
KOH - Kohlr	14 083 15-s	1	ELEMENT	0	
KOH - Kohlr	25 083 01-s	1	ELEMENT; AIR FILTER - PRIMARY	0	
Select		1			
Select		1			
Select		1			

Ref #	Part #	Description	Qty	Context Note	Foot Note	CAD Cost	CAD MSRP
1	25 086 397-S	SCREW, THREAD FORMING	4				4.16
20	12 237 01-S	CLAMP, CABLE-(#2523753S)	2				3.56
22	24 090 57-S	LEVER, GOVERNOR - (#2409069S)	1				5.05
23	24 211 03-S	BOLT, RD HD SQ NECK M6X1.0X25	1				2.46
24	M-641060-S	NUT, FLG M6X1.0	1				4.31
25	24 079 22-S	LINKAGE, CHOKE	1				6.88
26	24 089 25-S	SPRING, GOVERNOR (ORANGE)	1				16.71
27	24 089 55-S	SPRING, GOVERNED IDLE	1				2.46
26	24 089 25-S	SPRING, GOVERNOR (ORANGE)	1				16.71
27	24 089 55-S	SPRING, GOVERNED IDLE	1				2.46

Coming Soon: A new version of ARI's PartSmart Web will be featured on our site. For now, the previous version is linked.

New Shopping Cart/Bag & Promos

- **Site Update** : Whenever you sign in now, you are automatically placed in the **Standard** order status. You no longer need to click on the **Standard/Default Cart** upon login. The rest of the shopping cart is similar to the previous installation.
- You will also notice the term Shopping **“Bag”** instead of **“Cart”**. It means the same thing on the new site.

The screenshot displays a shopping cart with three items and a promo code section. The items are:

- KOH12 050 01-S - OIL FILTER**: Price \$11.97, Quantity 12, Total \$53.20.
- KOH14 083 15-S - ELEMENT**: Price \$10.47, Quantity 1, Total \$4.82.
- KOH25 083 01-S - ELEMENT; AIR FILTER - PRIMARY**: Price \$27.97, Quantity 1, Total \$12.87.

Each item has a placeholder image, a quantity selector, and action links: [Add Comment](#), [Add to order template](#), [Move to wishlist](#), and [Remove](#).

The right sidebar contains an **Order summary** table:

Subtotal	\$70.89
Estimated Shipping	To be calculated
Total	\$70.89

Below the summary is a **FUTURE PROMO FEATURE** section, highlighted with a green border. It includes a **Promo code** input field with an **APPL** button, a **CHECKOUT** button, and a **SAVE ALL ITEMS TO ORDER TEMPLATE** button. A green arrow points to the **SAVE ALL ITEMS TO ORDER TEMPLATE** button, and the text **COMING SOON.....** is displayed below it.

- **Coming Soon**: You can enter a coupon code directly in the Shopping Cart to activate discounts. For now, please contact your TM for submitting promo/program orders.

Technical Support

- If you are having technical issues with the new website please contact our web development team. You can [email us at mthomas@gardnerinc.com](mailto:mthomas@gardnerinc.com) or call us directly at 888-GARDNER ext. 8312 for assistance.

Preferred Browsers

- For the best user experience while using the new ***gardnerinc.com*** the following browsers and settings are recommended:

Microsoft Edge on Windows

Google Chrome on Windows

Google Chrome on OS X

Google Chrome on Android Phone

Safari on iOS Products

Firefox on OS X

Using a system setup outside of these may result in technical difficulties on the site.