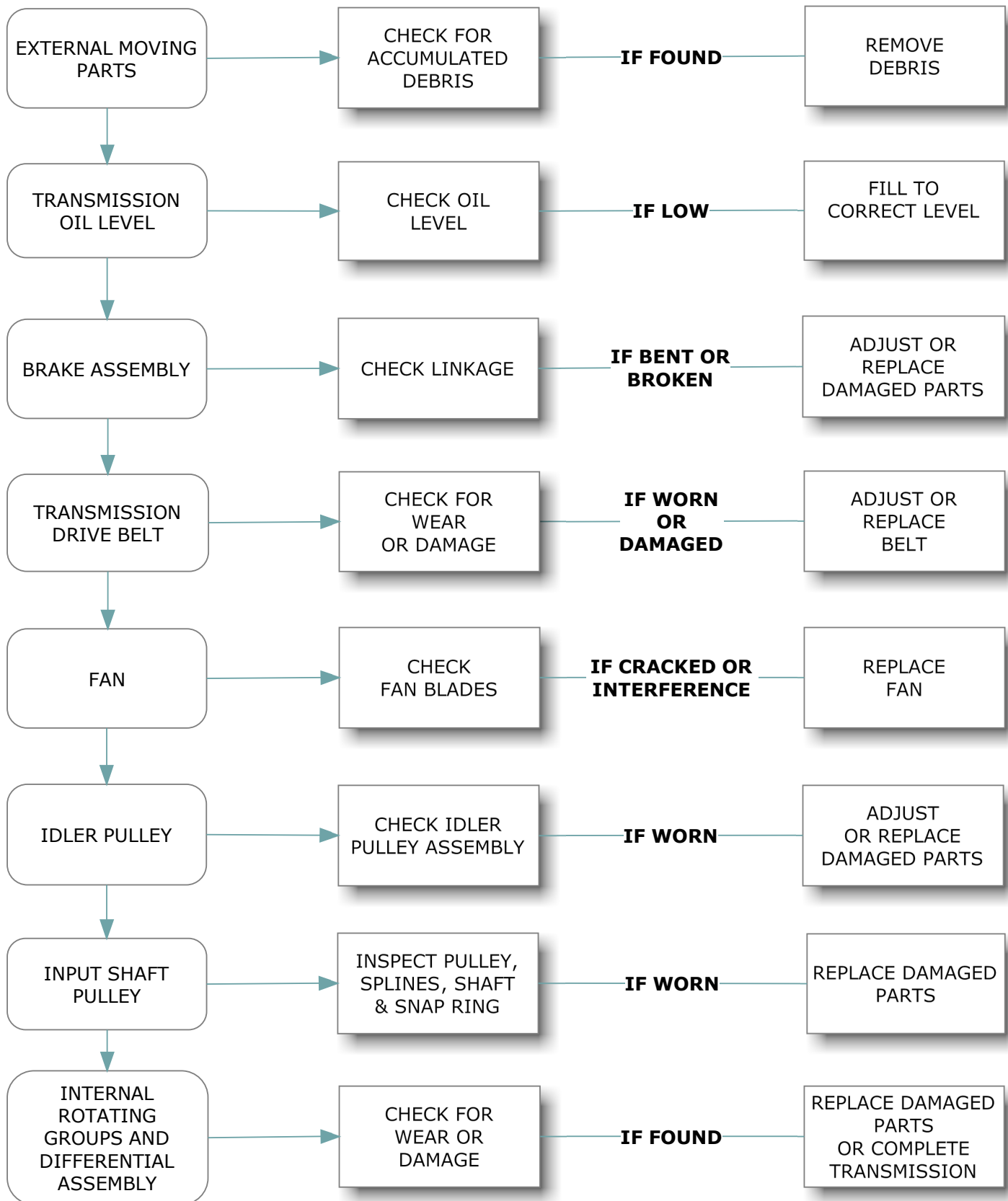
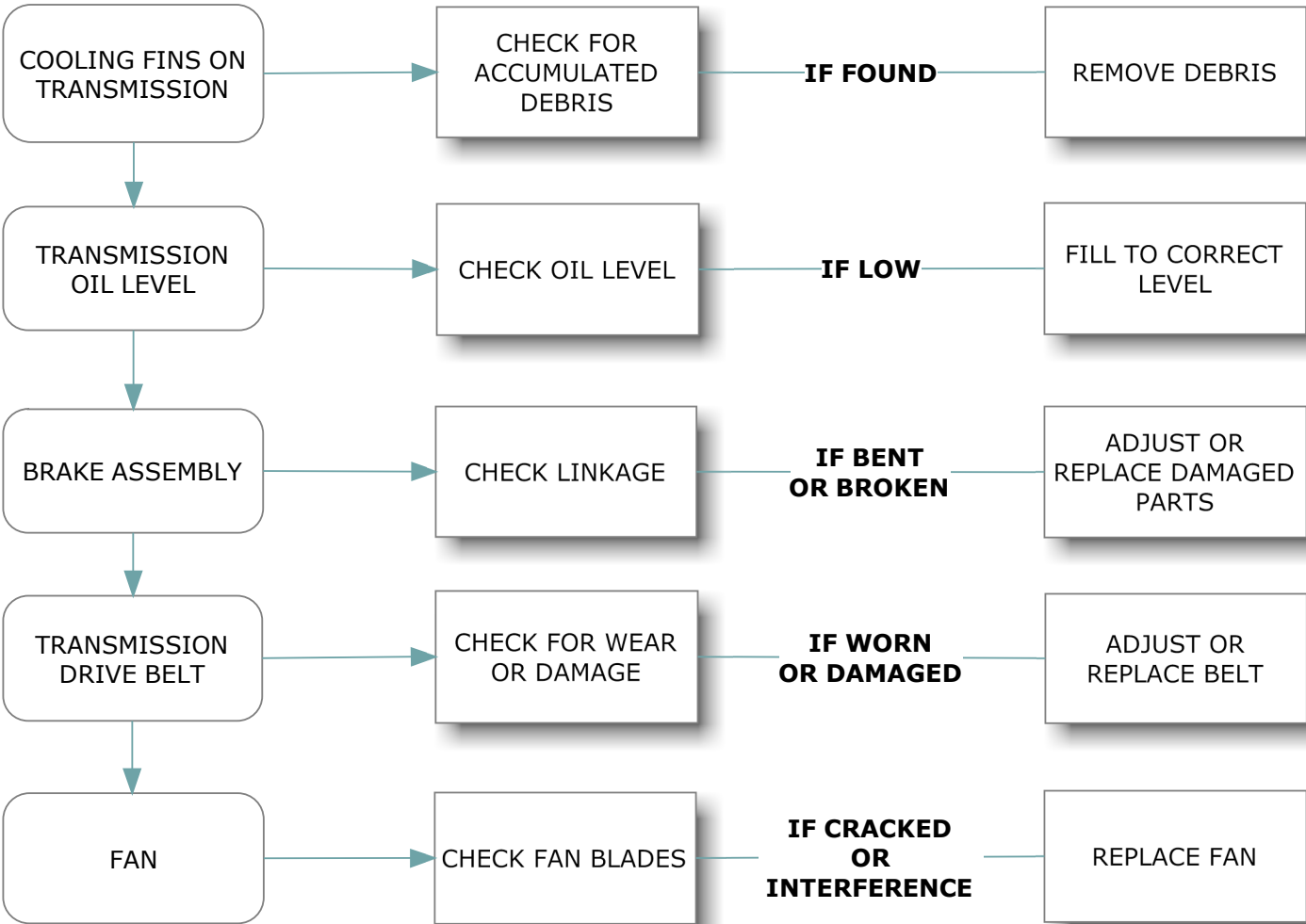


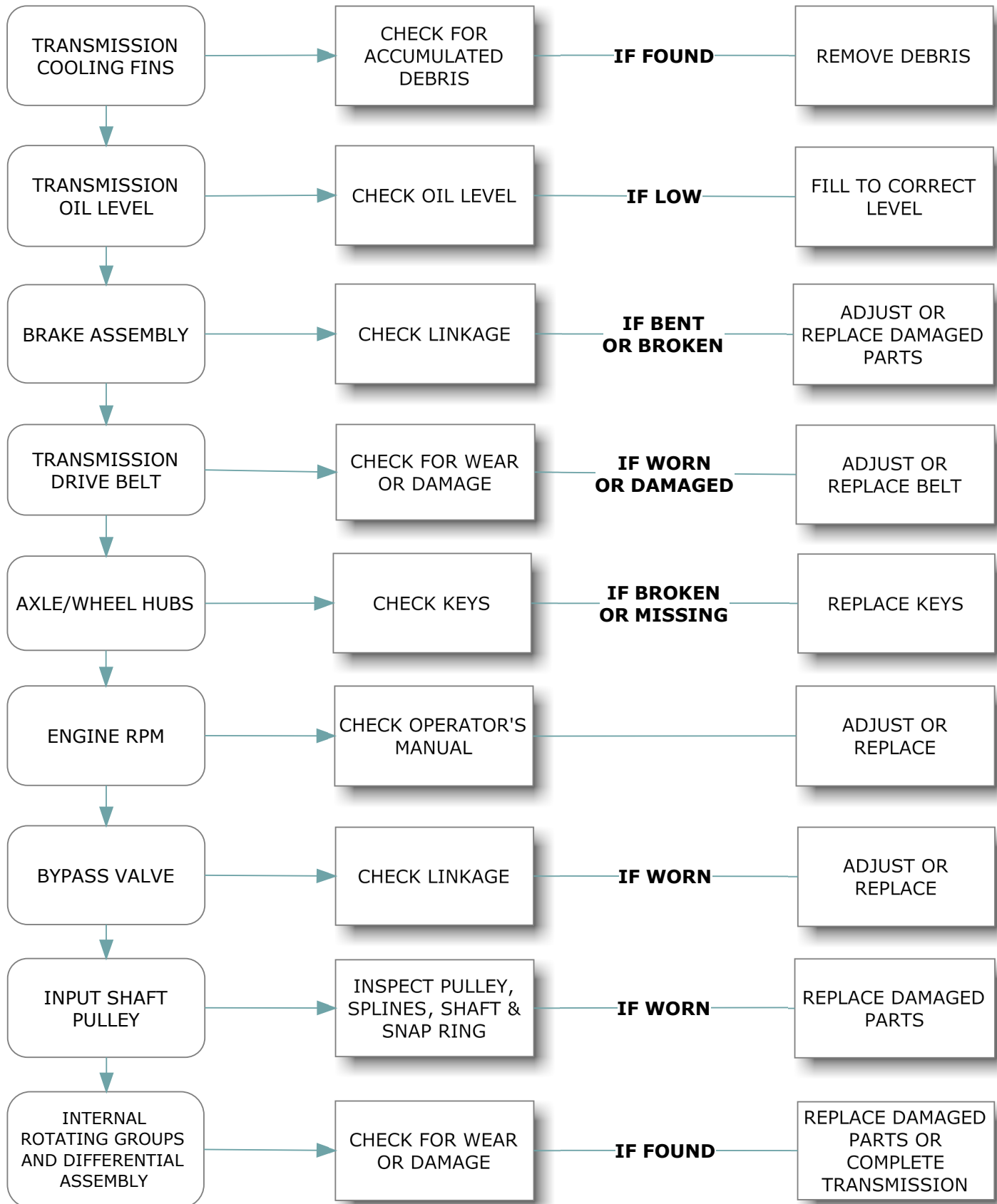
# TRANSMISSION NOISE



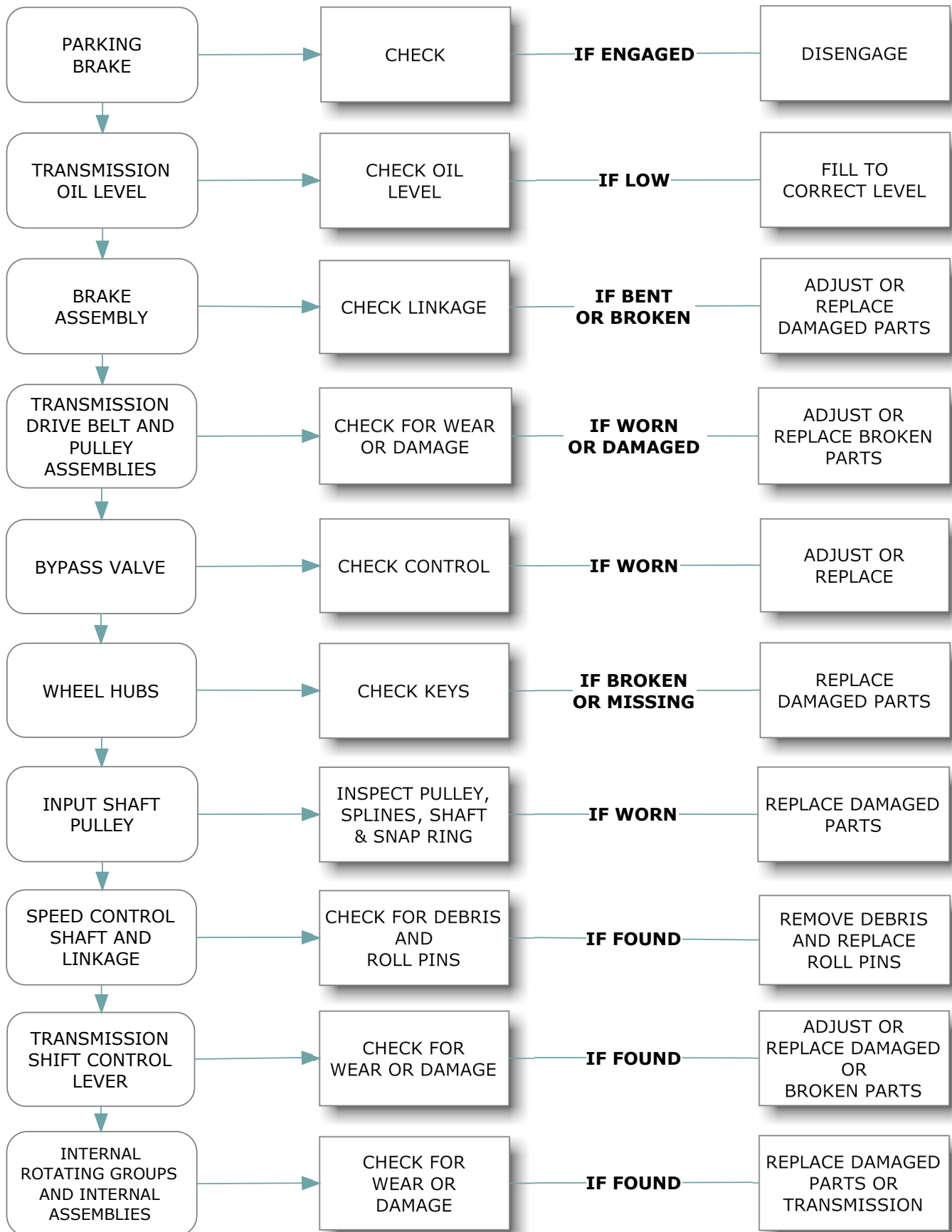
# TRANSMISSION OVERHEATING



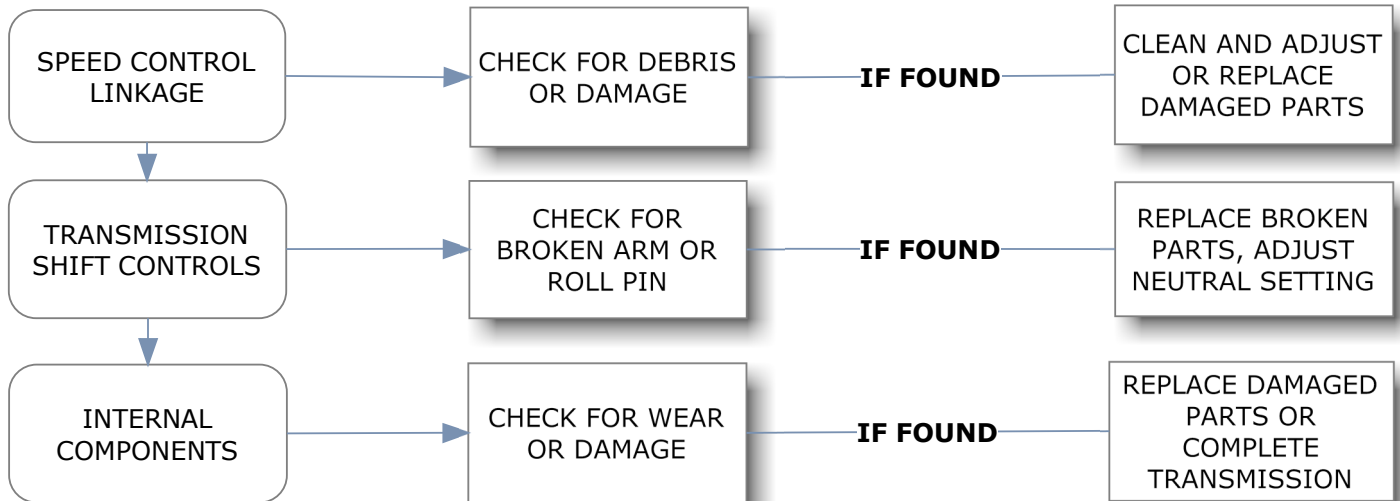
# LOW POWER : ONE OR BOTH DIRECTIONS



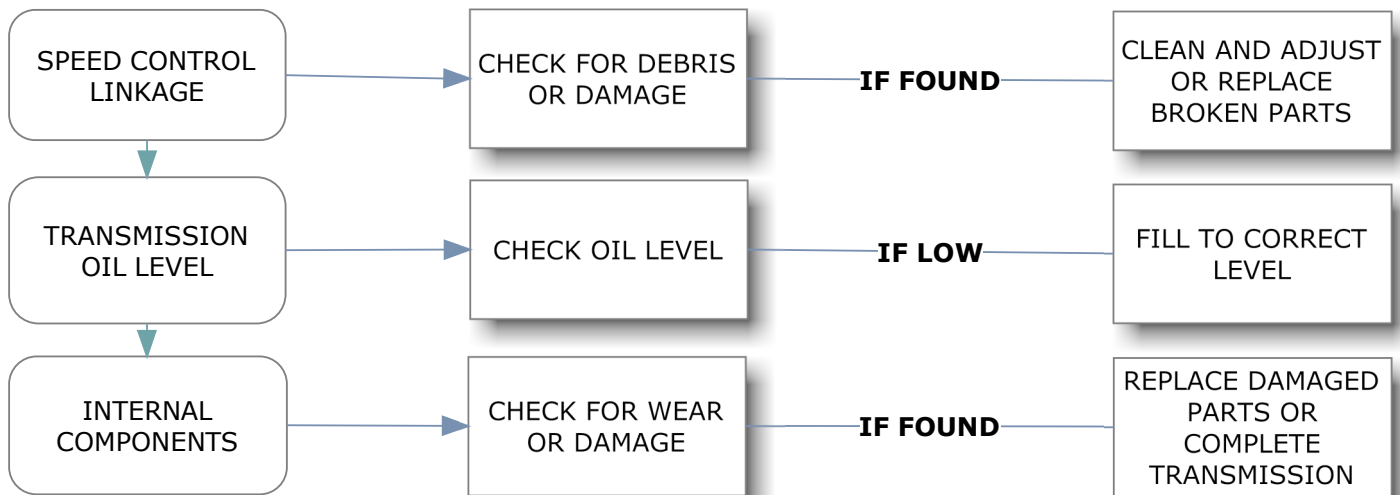
# WILL NOT OPERATE IN ONE OR BOTH DIRECTIONS



## CREEPS IN NEUTRAL



## HARD SHIFTING



## OIL LEAKAGE

